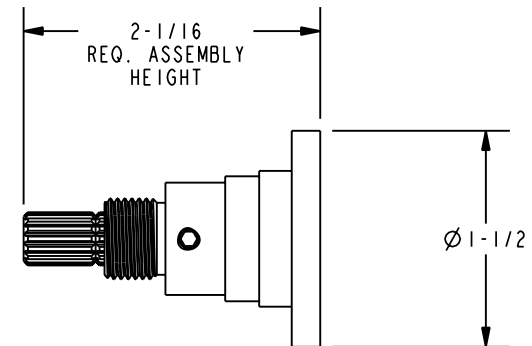
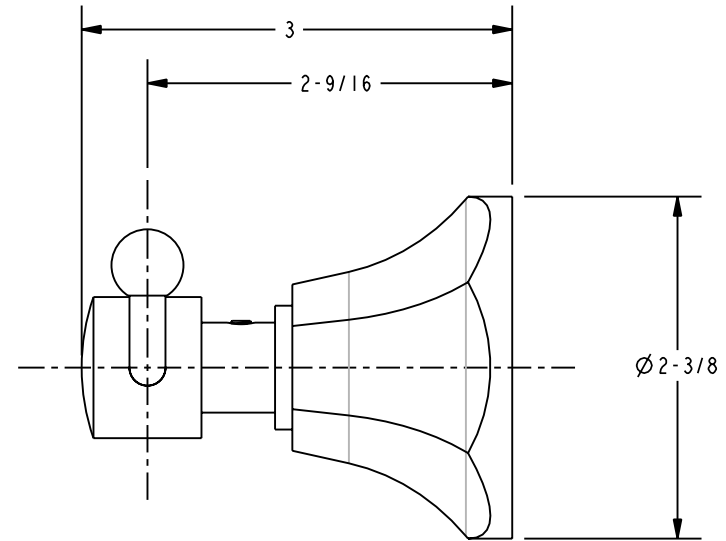
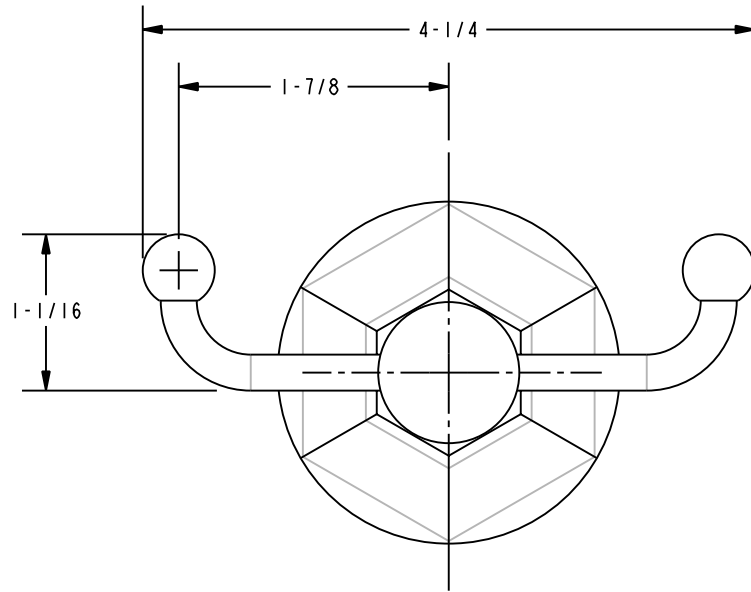


BILL OF MATERIAL (CURRENT LEVEL)				
ITEM	PT/ASSY	DESCRIPTION	TYPE	QTY.
1	7-567	DOUBLE GARMENT HOOK POST ASSY	ASSEMBLY	1
2	1-125	HARDWARE KIT	ASSEMBLY	1
3	10960	HEX ESCUTCHEON	PART	1
4	92000	SCREW 8 - 32 X 1/8 SS	PART	1
5	1-120	SINGLE POST MTG. ASSEMBLY	ASSEMBLY	1

SPECIFICATION DWG



DIMENSIONS ARE IN INCHES AND AN APPROXIMATION OF A TYPICAL INSTALLATION

COPYRIGHT 2004 BRASSTECH, INC. THESE DRAWINGS AND THE DESIGNS DEPICTED HEREIN ARE THE PROPRIETARY PROPERTY OF BRASSTECH. ANY USE OR REPRODUCTION IS SUBJECT TO THE EXPRESS APPROVAL OF BRASSTECH. UNAUTHORIZED USE IS STRICTLY PROHIBITED. ALL RIGHTS RESERVED.

BRASSTECH INCORPORATED		2001 E. CARNEGIE AVE. SANTA ANA, CA 92705 (949) 417-5207
DWG NO.	24-13	REV A
SCALE 1,000	REF. -	SHEET 2 OF 2