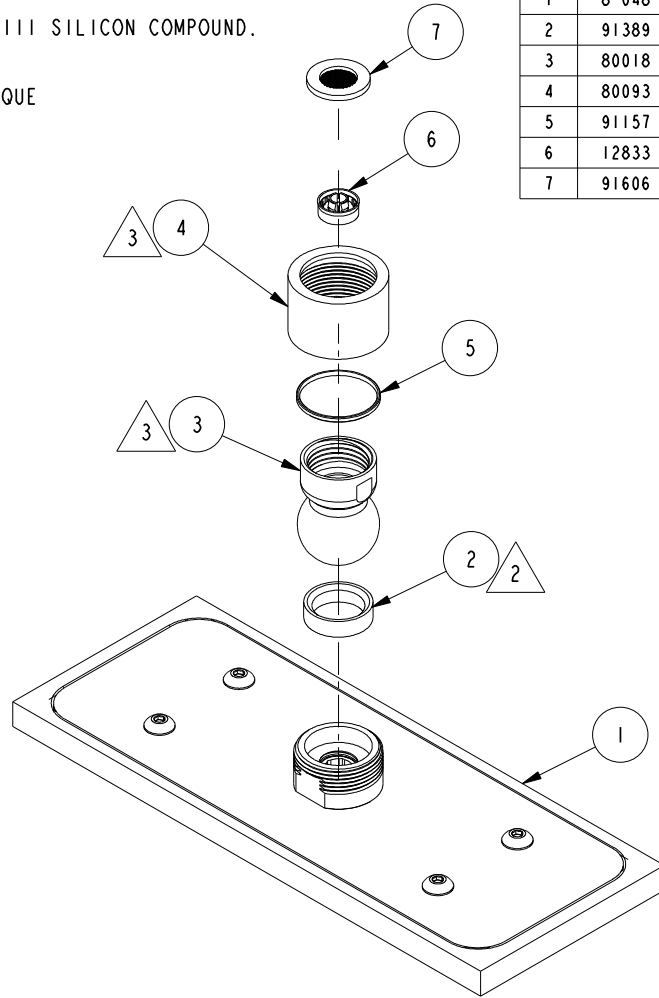


NOTES:

1. TO INSPECT ASSEMBLY, FOLLOW FIRST ARTICLE AND IN PROCESS INSPECTION SHEET.

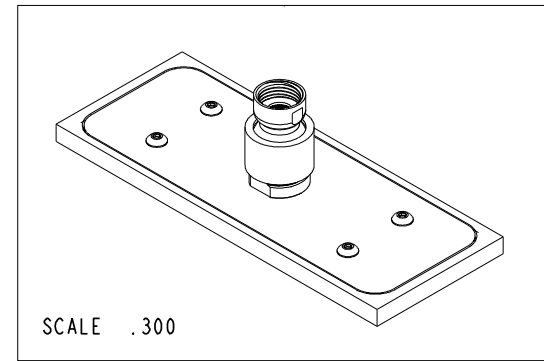
2. APPLY LIGHT FILM OF DOW CORNING 111 SILICON COMPOUND.

3. TIGHTEN THE NUT 80093 IN THE WAY THAT IT WILL TAKE 20-25 LB-IN TORQUE TO MOVE THE PIVOT BALL.



BILL OF MATERIAL (CURRENT LEVEL)

ITEM	PT/ASSY	DESCRIPTION	TYPE	QTY.
1	8-048	SHOWER HEAD ASM	ASSEMBLY	1
2	91389	WSHR, .630 ID X .823 OD X .228 THK, CONCAVE, RUBBER	PART	1
3	80018	PIVOT BALL	PART	1
4	80093	SHOWER COLLAR NUT	PART	1
5	91157	WSHR, .920 ID X 1.0 OD X .066 THK, FLT, NYLON	PART	1
6	12833	FLOW REGULATOR, 1.8 GPM MAX	PART	1
7	91606	GASKET W/ FILTER SCREEN	PART	1



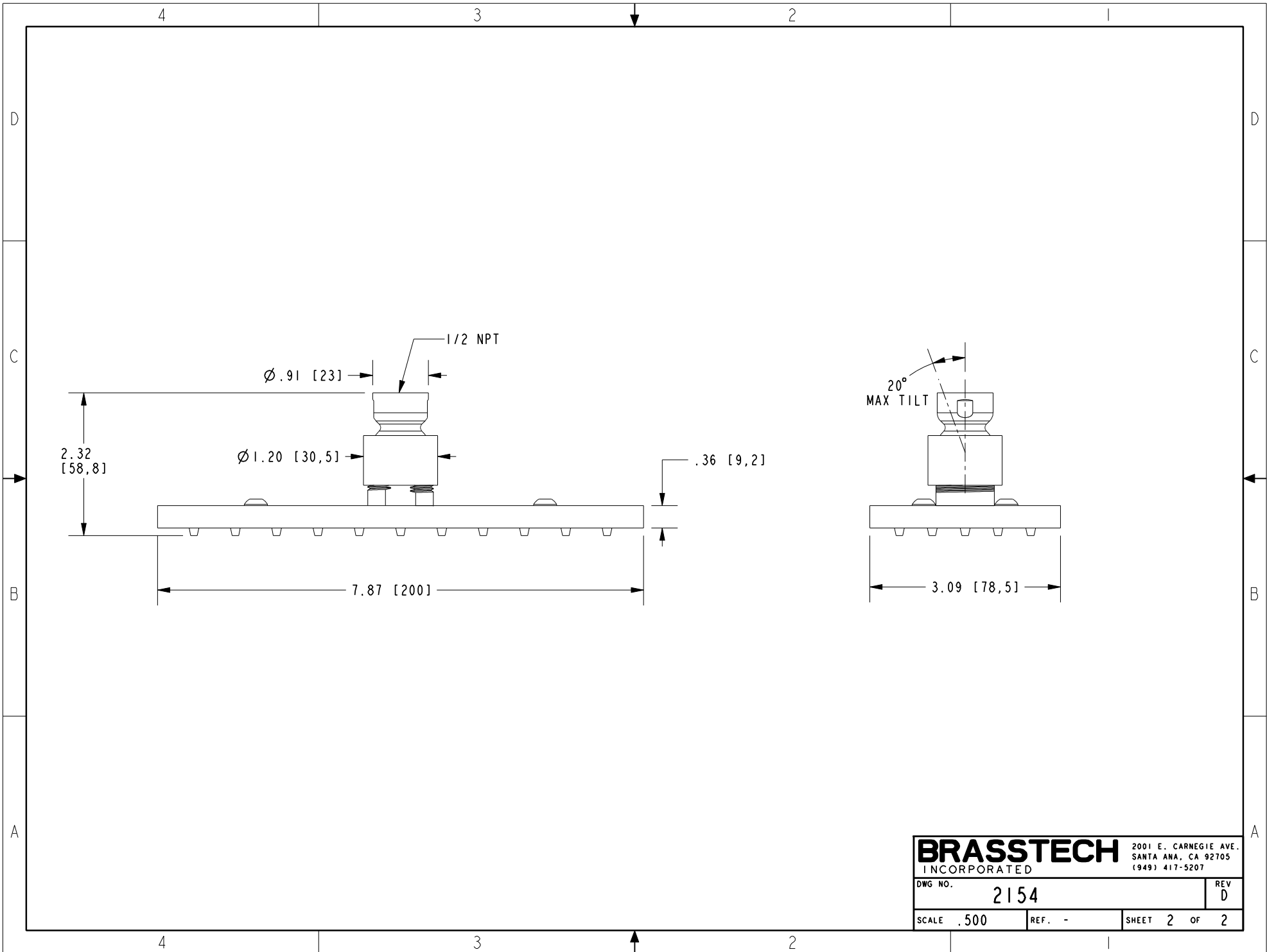
-	D	EN-4300w	03/16/21	R.S.
-	C	EN-3999	10/17/19	C.G.
-	B	EN-3552	03/20/18	V.V.
-	A	EN-3410	12/30/17	C.G.
-	-	EN-1735	06/10/11	-
ZONE	REV	DESCRIPTION	DATE	APPROVED

COPYRIGHT 2005 BRASSTECH, INC. THESE DRAWINGS AND THE DESIGNS DEPICTED HEREIN ARE THE PROPRIETARY PROPERTY OF BRASSTECH. ANY USE OR REPRODUCTION IS SUBJECT TO THE EXPRESS APPROVAL OF BRASSTECH. UNAUTHORIZED USE IS STRICTLY PROHIBITED. ALL RIGHTS RESERVED.

TESTING	-	-	-
ASSEMBLY	-	-	-
PLATING	-	-	-
POLISHING	-	NEXT ASSY	USED ON
MACHINING	-	APPLICATION	
TOOLING FIXTURE #	REMOVE ALL BURRS AND SHARP EDGES		

UNITS ARE: INCHES [MM]			
TOLERANCES ARE:			
FRACTIONS	DECIMALS	ANGLES	
±1/16"	.X ±.1 [2.5]	±1°	
	.XX ±.06 [1.5]		
(X.XXX) DENOTES CRITICAL DIMS. ALL THREADS ARE CRITICAL			
DRAWN	MANJUNATH	10/17/19	
CHECKED	C.G.	10/17/19	
APPROVED	C.G.	10/17/19	

BRASSTECH		2001 CARNEGIE AVE. SANTA ANA, CA 92705 (949) 417-5207	
INCORPORATED			
SINGLE FUNCTION SHOWER HEAD - RECTANGULAR			
DWG NO.		REV	
2154		D	
SCALE	REF.	SHEET	OF
.437	-	1	2



BRASSTECH		2001 E. CARNEGIE AVE. SANTA ANA, CA 92705 (949) 417-5207	
DWG NO.	2154	REV	D
SCALE	.500	REF.	-
SHEET		2	OF 2