

4

3

2

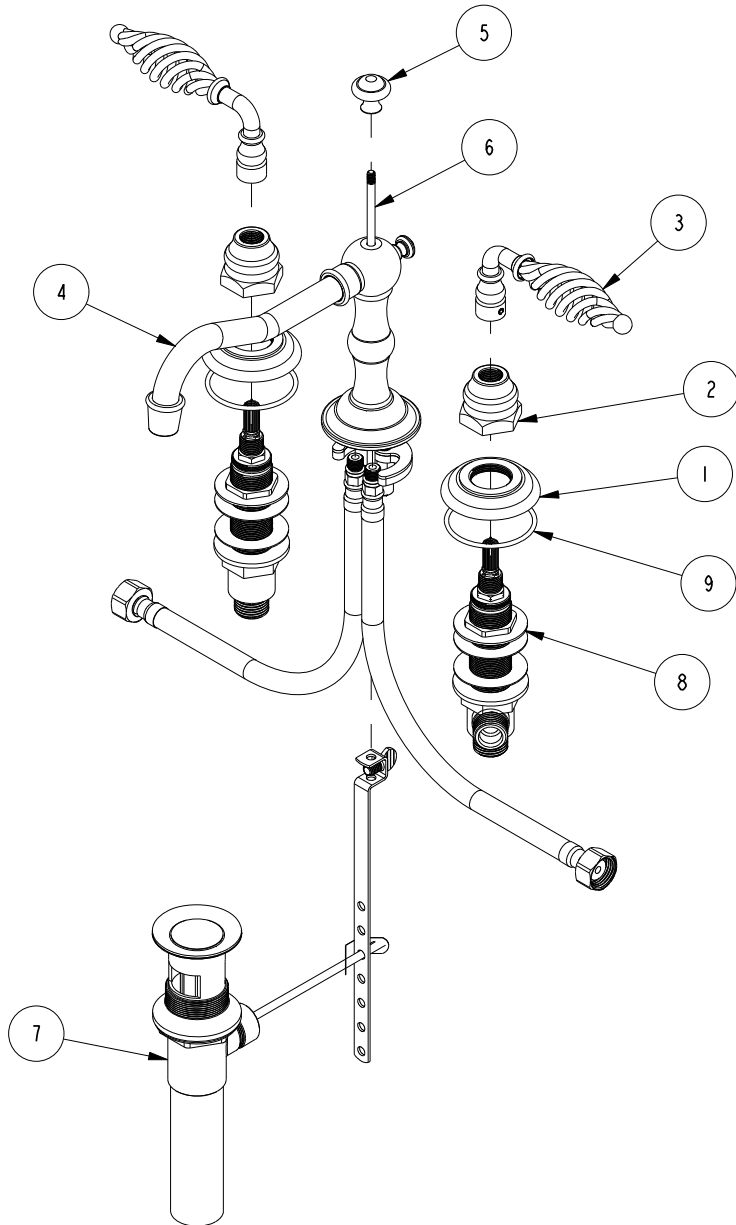
1

D

C

B

A



BILL OF MATERIAL (CURRENT LEVEL)

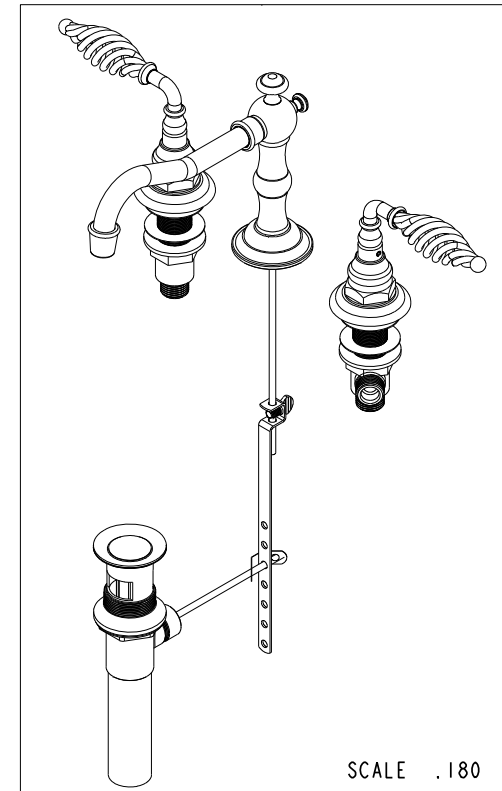
ITEM	PT/ASSY	DESCRIPTION	TYPE	QTY.
1	10048	ESCUTCHEON W/S VALVE	PART	2
2	10523	HEX ESCUTCHEON BONNET	PART	2
3	2-108	TWIST HANDLE ASM	ASSEMBLY	2
4	3-360	WIDE SPREAD SPOUT ONLY	ASSEMBLY	1
5	10289	POP-UP KNOB	PART	1
6	10288	3/16" POP UP ROD	PART	1
7	325	POP UP ASSEMBLY	ASSEMBLY	1
8	1-525	W/S VALVE INSTALLATION	ASSEMBLY	1
9	91231	O-RING, #2-136, EPDM, 65-75 DURO	PART	2

D

C

B

A



SCALE .180

COPYRIGHT 2005 BRASSTECH, INC. THESE DRAWINGS AND THE DESIGNS DEPICTED HEREIN ARE THE PROPRIETARY PROPERTY OF BRASSTECH. ANY USE OR REPRODUCTION IS SUBJECT TO THE EXPRESS APPROVAL OF BRASSTECH. UNAUTHORIZED USE IS STRICTLY PROHIBITED. ALL RIGHTS RESERVED.

BRASSTECH
INCORPORATED

2001 E. CARNEGIE AVE.
SANTA ANA, CA 92705
(949) 417-5207

LAVATORY SET

ASSY. NO.
2100

SCALE .220

REF. -

SHEET 1 OF 2

D	EN-2334	12/19/12
C	EN-1616	09/13/10
B	EO-1051	07/28/08
A	REV HDL	08/27/01
REV	REV DESC	DATE

4

3

2

1

SPECIFICATION DWG

D

C

B

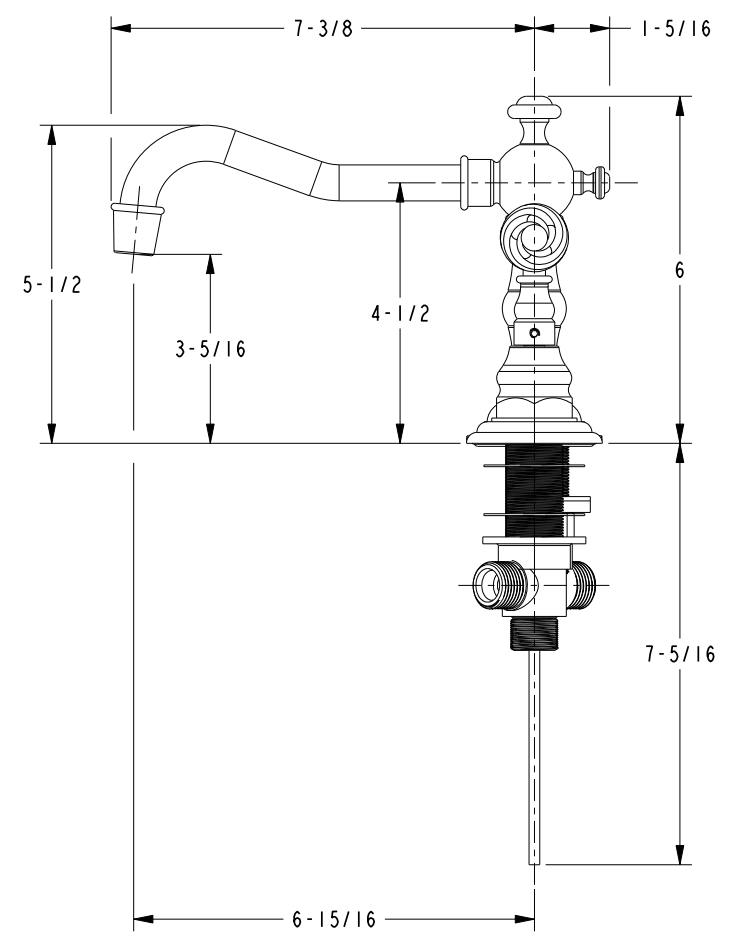
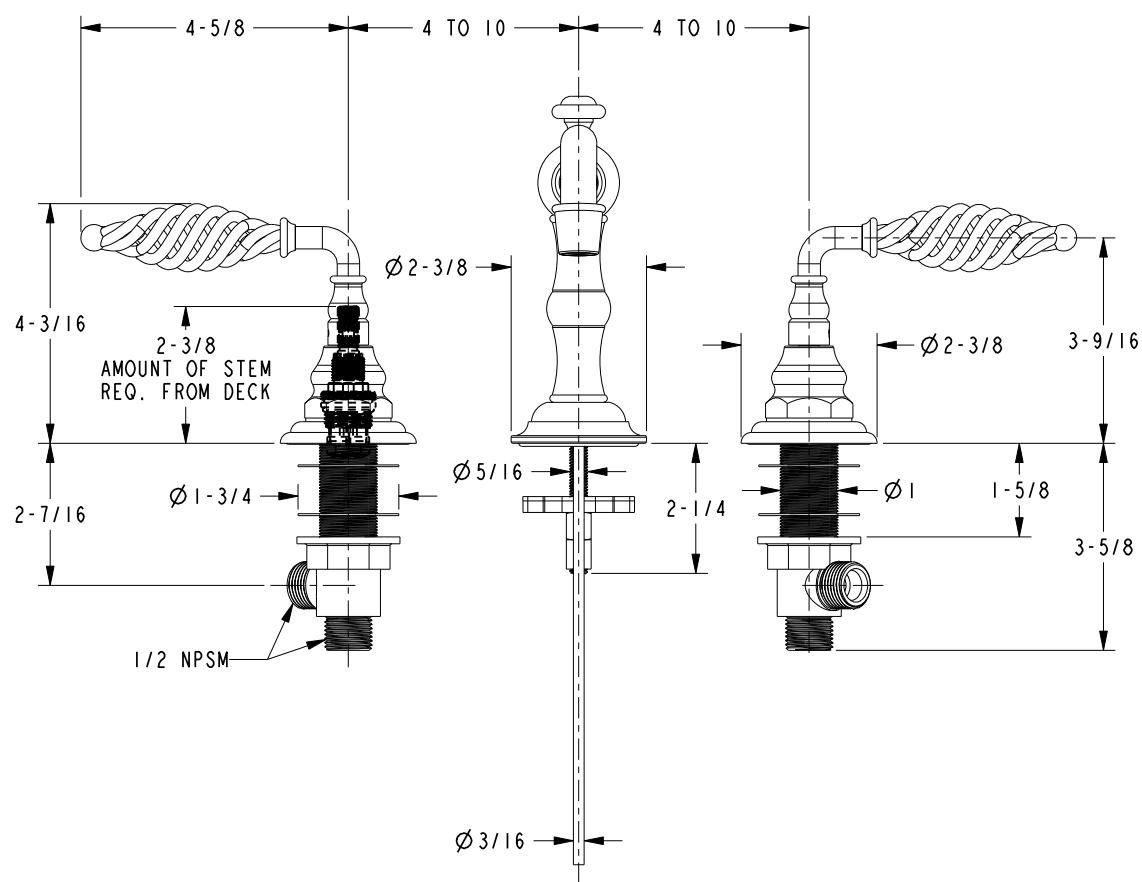
A

D

C

B

A



DIMENSIONS ARE IN INCHES AND AN APPROXIMATION OF A TYPICAL INSTALLATION

COPYRIGHT 2005 BRASSTECH, INC. THESE DRAWINGS AND THE DESIGNS DEPICTED HEREIN ARE THE PROPRIETARY PROPERTY OF BRASSTECH. ANY USE OR REPRODUCTION IS SUBJECT TO THE EXPRESS APPROVAL OF BRASSTECH. UNAUTHORIZED USE IS STRICTLY PROHIBITED. ALL RIGHTS RESERVED.

BRASSTECH		2001 CARNEGIE AVE. SANTA ANA, CA 92705 (949) 417-5207	
DWG NO.	2100	REV	D
SCALE	.300	REF.	-
SHEET	2	OF	2