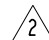
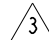
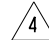

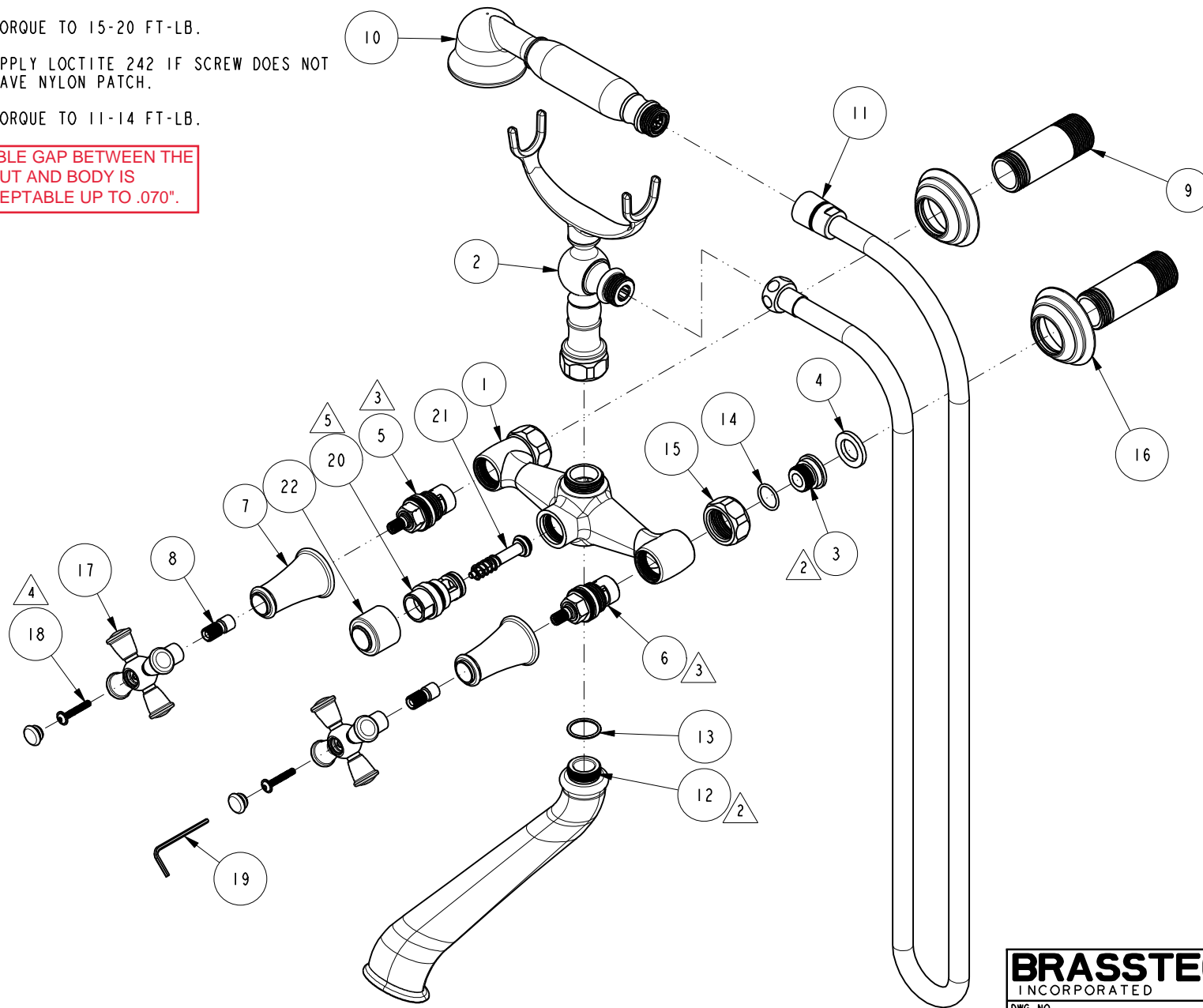
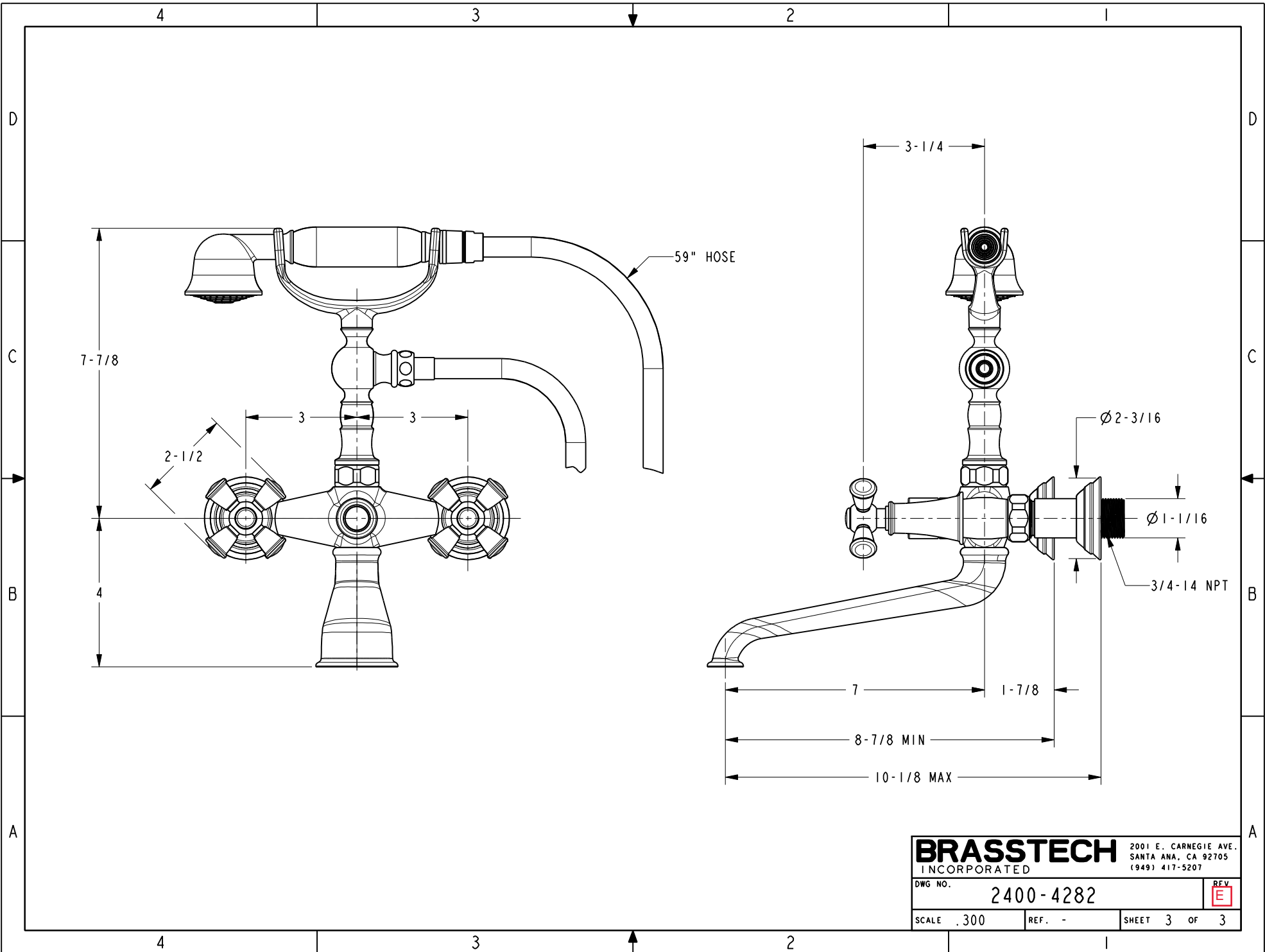


-  2 APPLY LOCTITE 680.
-  3 TORQUE TO 15-20 FT-LB.
-  4 APPLY LOCTITE 242 IF SCREW DOES NOT HAVE NYLON PATCH.
-  5 TORQUE TO 11-14 FT-LB.

6. VISIBLE GAP BETWEEN THE SPOUT AND BODY IS ACCEPTABLE UP TO .070".



BRASSTECH		2001 E. CARNEGIE AVE. SANTA ANA, CA 92705 (949) 417-5207	
DWG NO.	2400-4282		REV E
SCALE	REF.	SHEET	OF
.250	-	2	3



BRASSTECH		2001 E. CARNEGIE AVE. SANTA ANA, CA 92705 (949) 417-5207	
DWG NO.	2400-4282	REV	E
SCALE	.300	REF.	-
SHEET 3		OF 3	