
MONOGRAM

ZV48SSJSS

Monogram® 48" Stainless Steel Professional Hood

Features

\$3,499 MSRP*

940 CFM vertical exhaust with dual blowers

Variable speed fan control

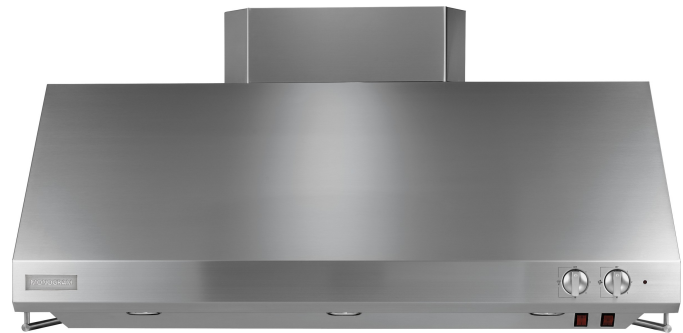
3 halogen lamps with 4 lighting levels

Infrared warming Lamp(s)

Utensil racks

Removable grease trays

Dishwasher-safe removable baffle stainless steel filters



*** Manufacturer's Suggested Retail Price (MSRP)**

Actual retail prices may vary by dealer. MSRP applies to the continental 48 United States and does not include such items as delivery, installation, installation accessories (i.e. range cords), or removal of old appliances. Consult your local authorized GE dealer for its prices.

Specifications

APPROXIMATE DIMENSIONS (HxDxW)

18 in x 25 in x 48 in

FEATURES

| | |
|--------------------------------------|-------------------------|
| Baffle Stainless Steel Filters | 3 |
| Cooktop Lighting | 3 ; Halogen |
| Damper in Transition | Yes |
| Double Wall Construction | Yes |
| Dual Blowers | Yes |
| Exhaust Options | 10" Round Duct |
| Grease Tray | 3 |
| Infrared Warming Lamps | 2 |
| Lighting Levels | 4 |
| Recirculating Capable | No |
| Removable Filter | Yes |
| Required Duct Size | 10-in. Round |
| Utensil Rod | Brushed Stainless Steel |
| Variable Speed Fan | Yes |
| Vertical Exhaust Blower Rating (CFM) | 940 |
| Welded / Finished Seams | Yes |
| CFM/ Sones Rating | 940/10.5 |
| Indicator Lights | "ON" |

APPEARANCE

| | |
|------------------|-----------------|
| Color Appearance | Stainless Steel |
| Design Style | Professional |
| Exterior Design | Straight Sides |

WEIGHTS & DIMENSIONS

| | |
|-----------------------------|-----------|
| Approximate Shipping Weight | 130.00 lb |
| Cabinet Width | 48.00 in |
| Net Weight | 130.00 lb |
| Overall Depth | 25 in |
| Overall Height | 18 in |
| Overall Width | 48 in |

POWER/RATINGS

| | |
|--------------|-------|
| Amps at 110V | 12.50 |
|--------------|-------|

ACCESSORIES

MONOGRAM

ZV48SSJSS

Monogram® 48" Stainless Steel Professional Hood

Optional 12" Duct Cover

ZX48DC12

Optional 6" Duct Cover

ZX48DC6

WARRANTY

Labor Warranty

Limited 1-year entire appliance

Parts Warranty

Limited 1-year entire appliance

Warranty Notes

For models produced on or after January 1, 2006 ; See written warranty for full details
