

## DESCRIPTION

- Metal construction with a chrome plated or LifeShine® polished brass finish
- Pressure balancing valve design with integral check stops, 1/2" IPS connections
- Supplied with adjustable temperature limit stop

## OPERATION

- Knob style handle, Pull-on push-off design
- Temperature operates through an 180° arc of handle travel (full cold to full hot)
- Adjustable temperature limit stop to control maximum hot water temperature
- Pressure balancing mechanism maintains selected discharge temperature to  $\pm 2^\circ$ .

## CARTRIDGE

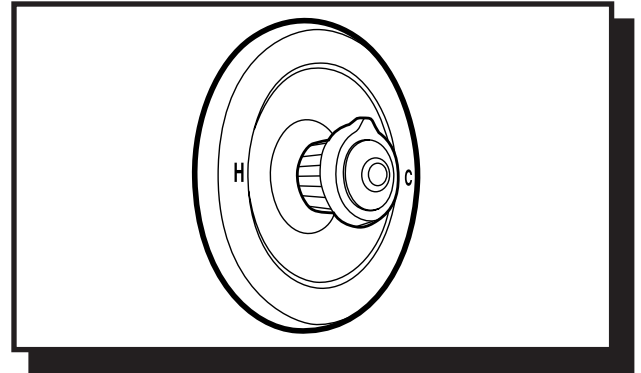
- 1225 cartridge design
- Nonmetallic/nonferrous and stainless steel materials
- Accommodates back to back installations

## STANDARDS

- Third party certified by CSA to meet CSA B-125, ASME A112.18.1M and all applicable requirements referenced therein

## WARRANTY

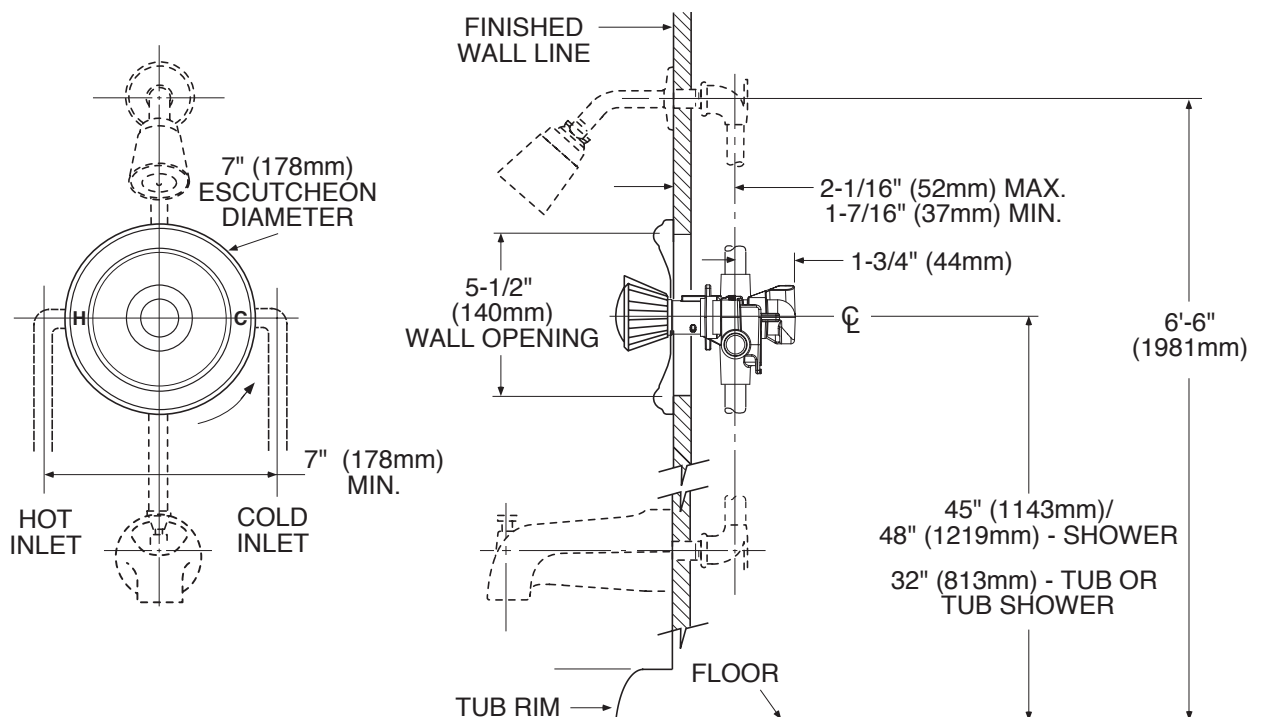
- Lifetime limited warranty against leaks, drips and finish defects to the original consumer purchaser
- 5 year warranty if used in commercial installations



**LEGEND® MOENTROL®**  
Single-Handle Tub/Shower Valve Only

**Models: 3150, \*3150P**  
**\*Model Discontinued 2/1/2000**

**NOTE: See reverse side for illustrated parts and handle options**



## CRITICAL DIMENSIONS

(DO NOT SCALE)