

Recessed Fixtures Technical Specification

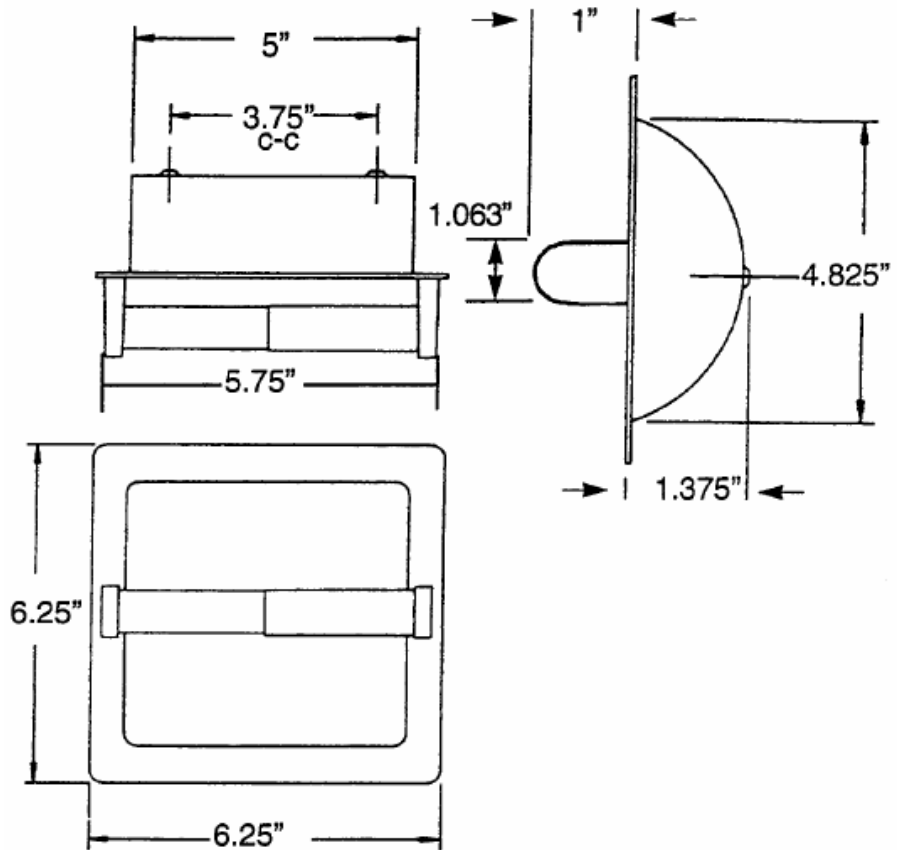
Recessed Paper Holders

2576

Stock Numbers:

- q 2576PB – Recessed Paper Holder
Polished Brass Finish
White Roller

Dimensions:



Materials:

Polished Brass Finish Recessed Paper Holder shell is die cast from highest quality zinc alloy (zamac) with a triple plated polished brass finish. Roller is plastic and spring loaded.

Installation Instructions:

Cut out wall opening 5 1/4" x 5 1/4" x 1 7/8" depth. If wood blocking is available, install recess shell into opening using 1 1/4" screws (provided). If wood blocking is not available, use optional installation clamp: BR587 or 588.

Stock Number: _____ **Recessed Paper Holder**
By Creative Specialties



25300 AL MOEN DRIVE • NORTH OLMSTED, OH 44070
CORPORATE HEADQUARTERS: (800) 321-8809 • FAX: (800) 848-6636
INTERNATIONAL: (440) 962-2000 • FAX: (440) 962-2726
CUSTOMER SERVICE (USA): 800-882-0116 • FAX: (888) 379-2720
WWW.CSI.MOEN.COM

©Copyright Creative Specialties International 2006