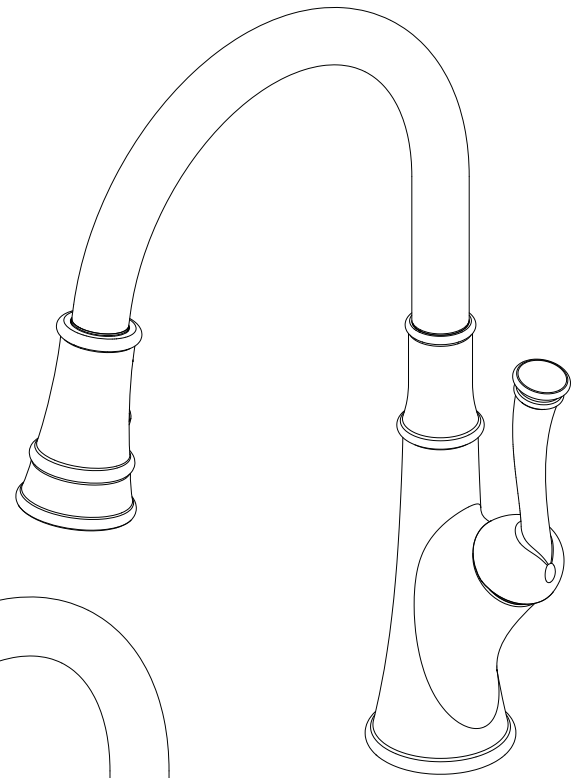


MISENO

SINGLE HANDLE KITCHEN FAUCET

Model MNO351CP, MN0351SS, MN0351ORB

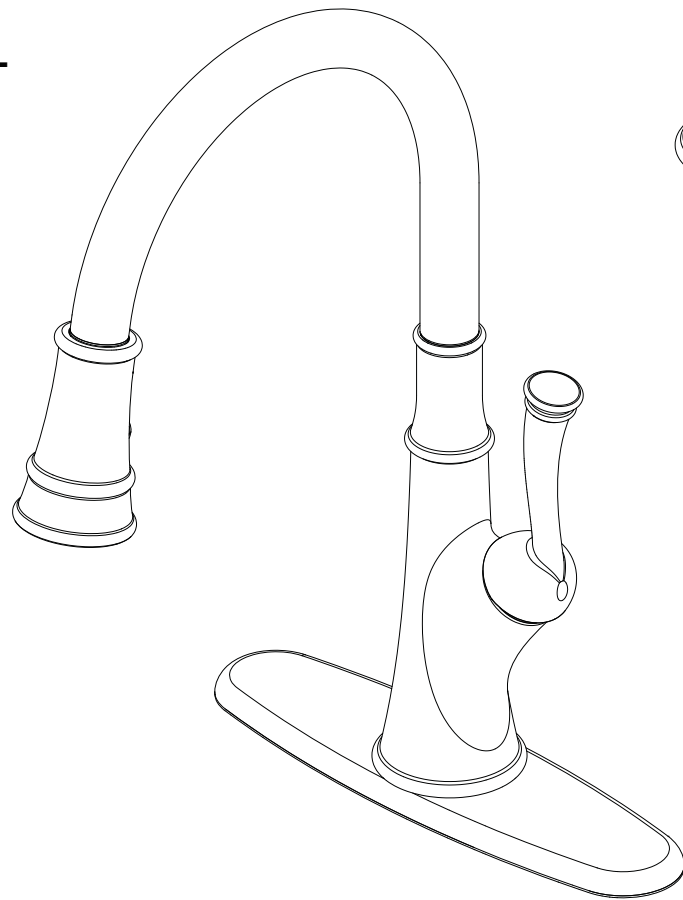


CAUTION-TIPS FOR REMOVAL OF OLD FAUCET:

Always turn off water supply before removing existing faucet or replacing any part of the faucet. Open the faucet handle to relieve water pressure and ensure that water is completely shut off.

CARE INSTRUCTIONS:

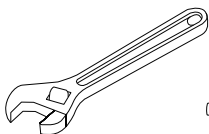
To preserve the finish of your faucet, apply non-abrasive wax. Any cleaners should be rinsed off immediately. Do not use abrasive cleaners on the faucet.



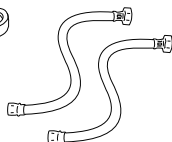
You may need



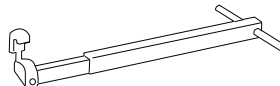
Goggles



Wrench



(2) Supply Lines



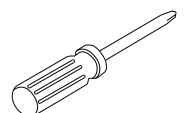
Basin Wrench



Sealant Tape

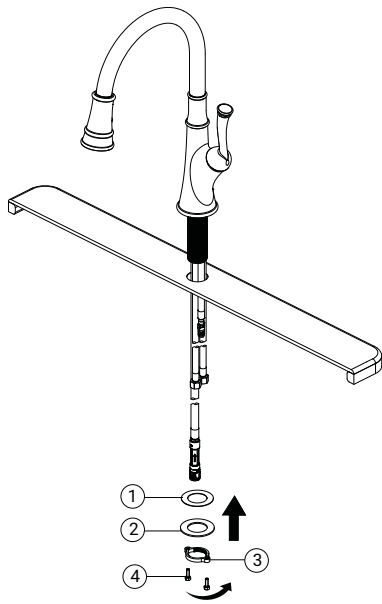


Silicone



Phillips Head Screwdrivers

1



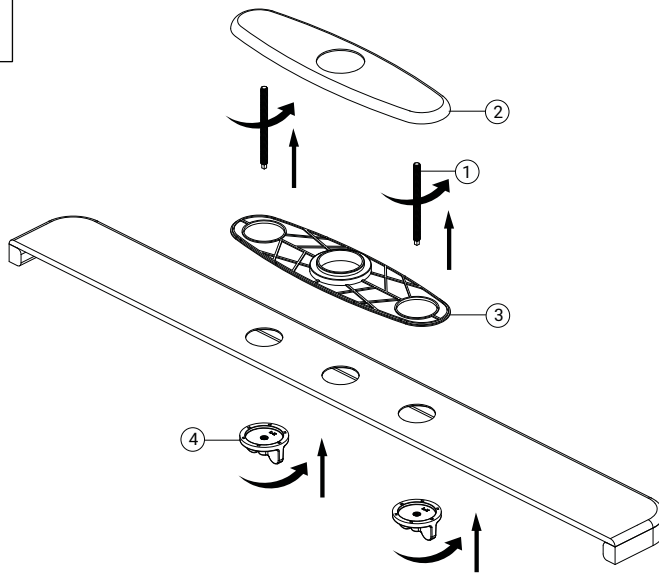
Standard Installation

Shut off water supplies.
(If installing the faucet with the escutcheon, begin with step 2.)

Insert faucet body through the hole in sink. Install plastic washer (1) and metal washer (2) onto the threaded mounting shank. Thread nut (3) onto mounting shank. Lock nut into position by tightening screws (4). Do not overtighten.

Please continue to Step 4.

2



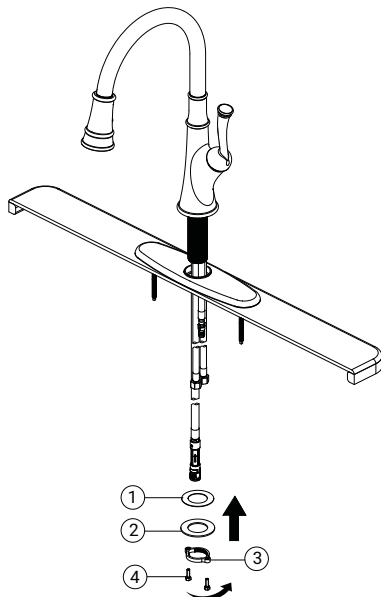
Optional Escutcheon Installation

Shut off water supplies.
(If installing the faucet without the escutcheon, begin with step 1.)

Screw the bolts (1) into the escutcheon (2) and ensure that the base plate (3) is pressed onto the escutcheon (2) before the escutcheon (2) is installed over the three holes in the sink. From underneath sink, hand tighten the mounting nuts (4). Do not overtighten.

Note: If the sink surface is uneven or irregular, plumber's putty or a silicone sealant may be used to create a watertight seal. Plumber's putty may have an adverse reaction with plastic gaskets under the spout base so if your faucet has a plastic gasket, use a high quality silicone sealant. Plumber's putty also may have an adverse reaction with some cultured marble or natural stone. In these cases a high quality silicone sealant is recommended.

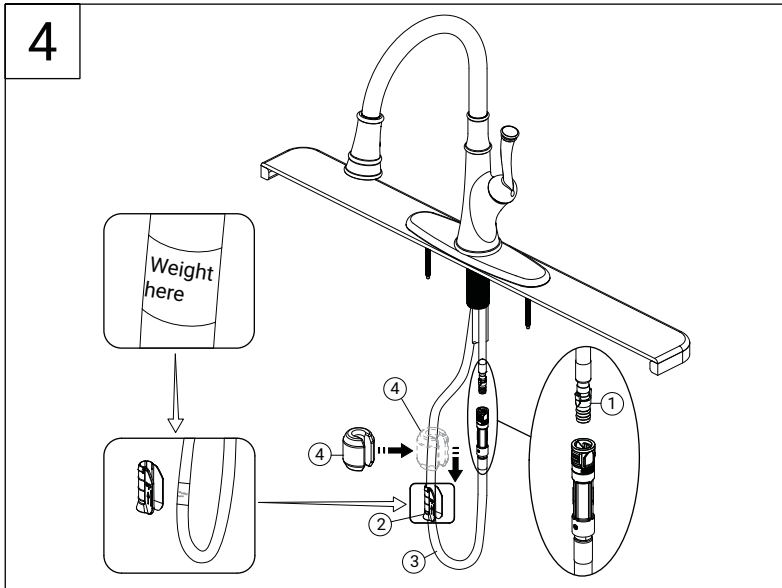
3



Optional Escutcheon Installation (2)

Insert faucet body through the hole in escutcheon.

Install plastic washer (1) and metal washer (2) onto the threaded mounting shank. Thread nut (3) onto mounting shank. Lock nut into position by tightening screws (4). Do not overtighten.

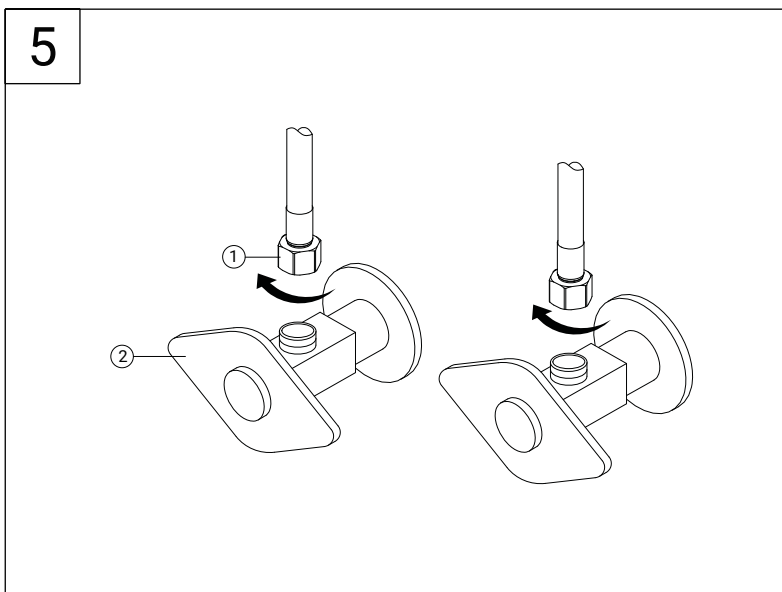


Screw quick connector to the free end of hose.

Align block (1) and tabs on quick connect. Push quick connect housing firmly upward and snap onto receiving block. Pull down moderately to ensure connection has been made.

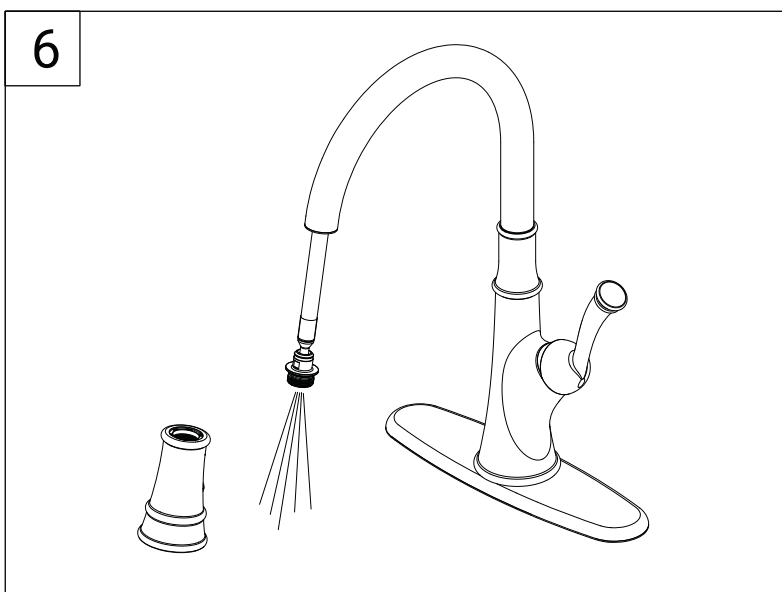
If it is necessary to remove quick connect, squeeze tabs on hose between index finger and thumb, then pull down to disconnect.

Install the weight clip (2) at the point of the hose (3) marking "weight here". Insert the weight (4) onto the clip (2) by sliding it down onto the clip (2).



Making the waterline connections

Thread the nut (1) on supply line onto outlet of water supply valve (2) and tighten with wrench. Do not overtighten.

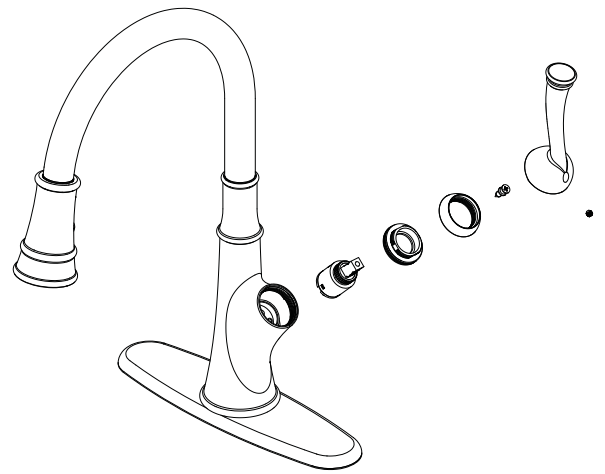


After installation is complete, remove the sprayer by unscrewing it in a counter-clockwise direction.

Turn on the water supply to flush debris from the faucet. Run the hot and cold water for at least one minute each.

Important: This flushes away any debris that could cause damage to internal parts.

Maintenance:
 If faucet leaks underneath handle or water does not completely shut off: Replace cartridge.



* Specify Finish

