

# INSTALLATION INSTRUCTION FOR FIXTURE#1624

## READ AND SAVE THESE INSTRUCTIONS

**WARNING! SHUT POWER OFF AT FUSE OR CIRCUIT BREAKER.**

### ASSEMBLY THE FIXTURE (FIG. 1)

1. Shut off the power supply at the fuse box or circuit breaker. Remove the old fixture from ceiling, including the old cross bar.
2. Carefully unpack your new fixture and lay out all the parts in a clear area. Take care not to lose any small parts necessary for installation.
3. Thread the nipple (P) into the coupling (Y) well.
4. Insert the tube (Q), check ring (O), cap(N) over the nipple (P), then secure with hex nut (M).
5. Thread the coupling (L) onto the nipple (P), then assemble the upper arm assembly (K) onto the coupling (L), and lock the upper arm assembly (K) and the lower arms (V) together using the ball screw (R).
6. Put the wheel (J) over the coupling (L), then thread the nipple (I) into the coupling (L) well.
7. Assemble the extension rod (G) together using the nipple (H), then thread the bottom end of the extension rod (G) onto the nipple(H) tightly.
8. Put the ring (E) over the top end of the extension rod (G) and secure with loop (F).
- (Remark: there is one piece 11" L. chain included in the hardware bag. You could add the chain on to increase the fixture height if needed)
9. Put the glass shade(W), spacer ring (U) over the socket (X), then secure with socket ring (T) using socket ring tool(S).
10. Install the bulbs in accordance with the fixture's specifications. **DO NOT EXCEED THE MAXIMUM WATTAGE RATING!**

### MOUNTING THE FIXTURE

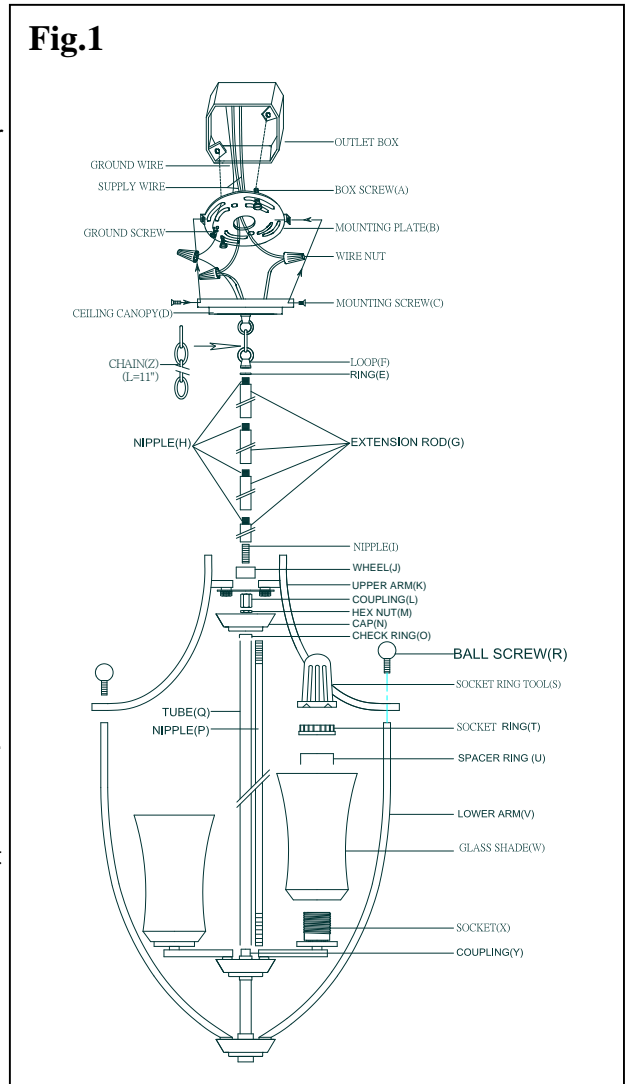
11. Attach the mounting plate (B) to the outlet box using the outlet box screws (A). The side of the mounting bar marked "GND" must face out.
12. Follow the wiring instructions carefully (See Fig.2).
13. Attach the fixture main body onto the mounting plate (B) by attaching the ceiling canopy(D) onto the mounting plate (B) using the mounting screw (C).

### Wiring (See fig.2)

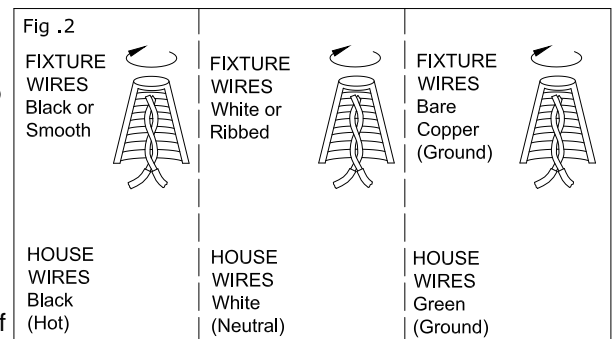
1. Connect the electrical wires as follows. Connect the black wire from the fixture to the black (HOT) house wire. Connect the white wire from the fixture to the white (Neutral) house wire. Make sure all the wire nuts were secured. You may wrap the connections with electrical tape. If your outlet box has a ground wire (Green or Bare Copper) connect fixture's ground wire to it. Other wise attach the bare copper fixture wire to the green ground screw on the mounting bar.
2. Tuck the wire connections neatly into the ceiling junction box.

Your installation is now complete. Turn on the power supply of the junction box to test the fixture.

**Fig.1**



**Fig .2**



Notice: It is important to use proper chain pliers (not included) to OPEN and CLOSE the chain included with this fixture. Do not open them with other tools that may twist or stress the chain links. It is important to use proper chain pliers like the ones shown in the diagram.



american  
lighting  
association