

INYO™

PROTECTION THAT LIVES ON
MICROBAN®

GLAZED PORCELAIN FLOOR TILE AND GLAZED CERAMIC MOSAICS
WITH MICROBAN® TECHNOLOGY

MARAZZI®

DARE TO BE BOLD™

FABRIC LOOK



INYO™ PROTECTION THAT LIVES ON MICROBAN®

Inyo takes a rustic approach to porcelain tile with its moody crackle design. The handsome leather look, available in five rich colors, creates a warm and luxe aesthetic and offers a lifetime of antimicrobial surface protection that does not wash off or wear away thanks to DEFEND™ powered by Microban®. Select from must-have sizes: 2 x 8, 8" hexagon, 1 x 6 mosaic, and the penny round mosaic - each thoughtfully curated for a custom appeal. Look no further, Inyo is essential to your luxury design.

APOTHECARY



COVER PHOTO: INK
ABOVE PHOTO: EMBER

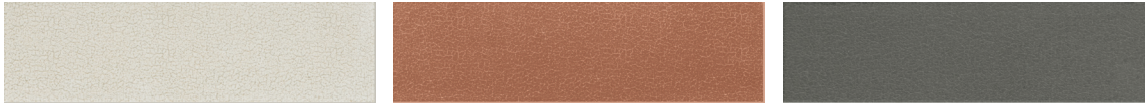
FABRIC LOOK

USAGE	MATERIAL	PRICING	SPECIAL FEATURES
<p>FLOOR WALL COUNTERTOP SHOWER FLOOR EXTERIOR FLOOR</p>	<p>PG PORCELAIN GRADE CG CERAMIC GRADE</p>	<p>LOW HIGH</p>	<p>STEPWISE TRUEDGE MADE IN THE U.S.A. LARGE FORMAT MOSAIC/DECO ENCAUSTIC TERRAZZO PAVER CUSTOMIZE</p>

FABRIC LOOK

NOT APPLICABLE FOR ALL PRODUCTS IN THIS SERIES. SEE CHARTS FOR FULL PRODUCT DETAILS.

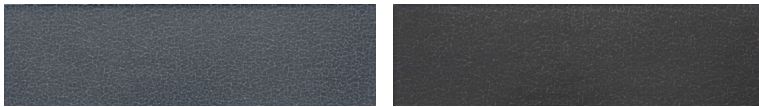
2 x 8 FLOOR TILE



IN70 Crema

IN71 Ember

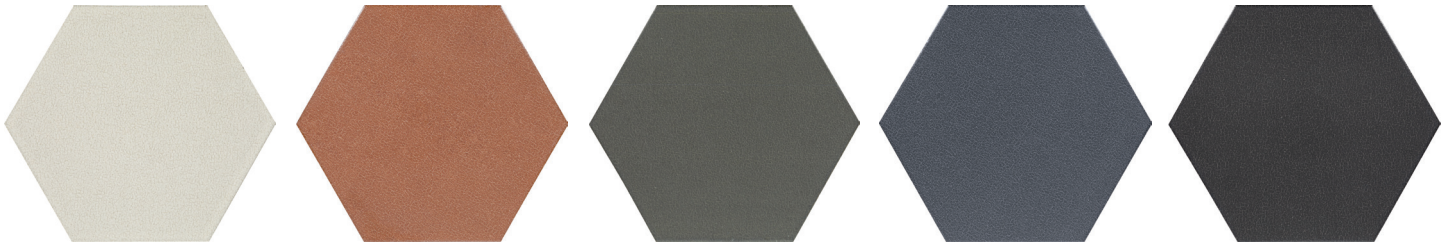
IN72 Olive



IN73 Indigo

IN74 Ink

8" HEXAGON FLOOR TILE



IN70 Crema

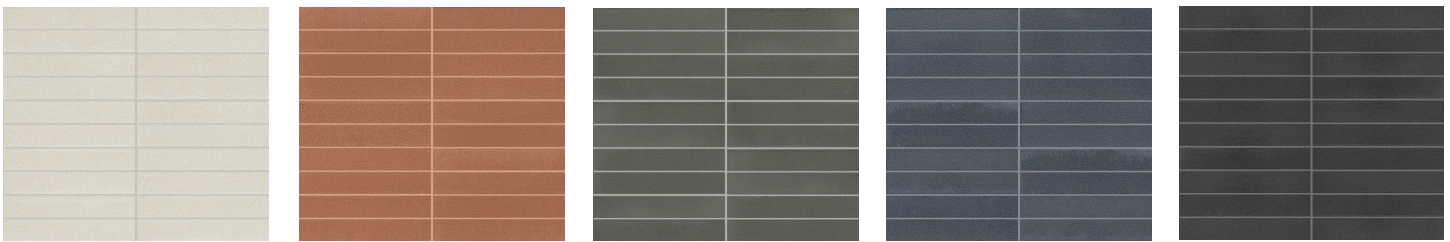
IN71 Ember

IN72 Olive

IN73 Indigo

IN74 Ink

1 x 6 MOSAIC - 12 x 10 SHEET



IN70 Crema

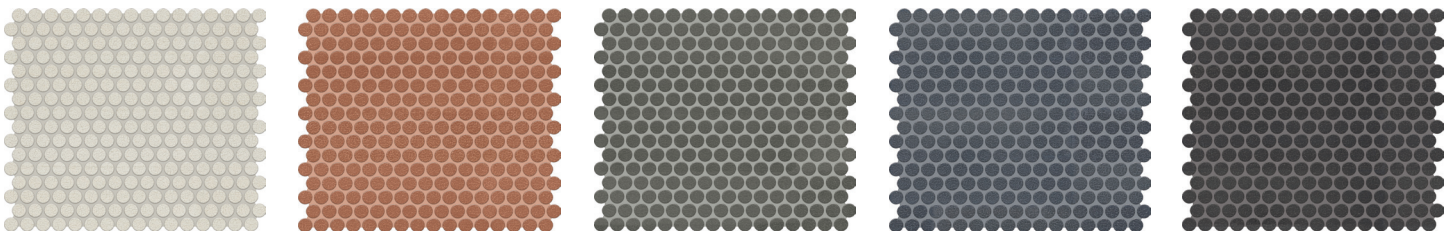
IN71 Ember

IN72 Olive

IN73 Indigo

IN74 Ink

PENNY ROUND MOSAIC - 13 x 12 SHEET



IN70 Crema

IN71 Ember

IN72 Olive

IN73 Indigo

IN74 Ink



VISIT MARAZZIUSA.COM/WHYTILE FOR A COMPLETE LIST OF QUALIFICATIONS AND EXCLUSIONS.

USAGE	MATERIAL	PRICING	SPECIAL FEATURES

FABRIC LOOK

NOT APPLICABLE FOR ALL PRODUCTS IN THIS SERIES. SEE CHARTS FOR FULL PRODUCT DETAILS.

SIZES

			Thickness	Sq. Ft./ Carton	Pieces/ Carton
	2 x 8 Floor Tile	2" x 7-15/16" (5.08 cm x 20.26 cm)	3/8"	4.00	36
	8" Hexagon Floor Tile*	7-7/8" x 9-1/16" (20.04 x 23.16 cm)	5/16"	9.37	25
	1 x 6 Mosaic* (Dot-mounted)	11-1/2" x 9-3/4" (29.21 cm x 24.76 cm Sheet)	5/16"	8.30	10
	Penny Round Mosaic** (Dot-mounted)	13-3/8" x 11-3/8" Sheet (33.97 cm x 28.89 cm Sheet)	1/4"	10.60	10

* 2 x 8, 8" Hexagon & 1 x 6 Mosaic available in satin finish only.

** Penny Round Mosaic available in matte finish only.

APPLICATIONS

	Target DCOF wet	Suitable
Dry & Level - Interior Floor	N/A	■
Wet & Level - Interior Floor	≥ 0.42	■*
Shower Floors (Residential or Light Commercial)	≥ 0.42	■*
Exterior Floor Applications (including pool decking & other wet areas with minimal footwear)	≥ 0.60	
Ramps & Inclines	≥ 0.65	
Walls/Backsplashes	N/A	■
Countertops	N/A	■
Pool Linings	N/A	■**

A DCOF value of ≥0.42 is the standard for tiles specified for level interior spaces expected to be walked upon when wet, as stated in ANSI A137.1-A326.3. For more information about DCOF and the DCOF AcuTest™, visit marazziusa.com/DCOF.

APPLICATION NOTES:

Suitable for exterior applications (provided it is noted as suitable in the applications chart above) in freezing and non-freezing climates, when proper installation methods are followed.

Mosaics suitable for exterior applications (provided it is noted as suitable in the applications chart above) in non-freezing climates, when proper installation methods are followed.

* Penny Round mosaic only.

** Mosaic tile only.

INSTALLATION

Grout Joint Recommendation	Shade Variation
1/8"	High Variation

PERFORMANCE CHARACTERISTICS

	ASTM#	Floor Result	Mosaic Result
Water Absorption	C373	< 0.5%	< 3.0%
Breaking Strength	C648	> 275 lbs	> 250 lbs
Scratch Hardness	MOHS	8.0	6.0 - 8.0
Chemical Resistance	C650	Resistant	Resistant

For additional information on test results, visit us at: marazziusa.com/information/TestResults.

DURABILITY

Floor Surface Wear Resistance

1	Residential Bathrooms	③	All Residential / Light Commercial
2	All Residential Areas	4	All Residential / Commercial

NOTES

Since there are variations in all fired ceramic and natural products, tile and trim supplied for your particular installation may not match samples. Final confirmation should be made from actual tiles and trim prior to installation. Manufactured in accordance with ANSI A137.1 standards.

To achieve optimal results, all tile should be selected from multiple cartons and shading and graphic arrangement planned prior to installation.

Water, oil, grease, improper drainage and certain footwear can create slippery conditions. Floor applications expected to be exposed to these conditions require extra caution in product selection.

For additional information refer to "Factors to Consider" at: marazziusa.com/Factors.

Use of a white latex modified thin-set is recommended for installation.

Special care should be taken when grouting with dark pigmented colors. A grout release is recommended to prevent finely powdered pigments from lodging in the pores of the surface. Use of a latex modified thin-set is recommended for installation.

FEATURES

	POST-CONSUMER RECYCLED MATERIALS		PRE-CONSUMER RECYCLED MATERIALS
	REVEAL IMAGING®		

	CERTIFIED PORCELAIN TILE		ZEROTOX
--	--------------------------	--	---------

All or select items within this series meet the requirements for these qualifications. For more information visit marazziusa.com.