

Little GIANT®

LG PLUGGER JUNCTION BOXES

FOR USE WITH SUMP, SEWAGE AND EFFLUENT PUMPS



Applications

- Lift pump chambers
- Sump pump basins
- Holding tanks
- Sewage and water removal systems

Features

- NEMA 4X non-corrosive PVC enclosure
- Hinged cover for convenience
- Receptacle for pump and pump switch (120V or 230V)
- Custom liquid-tight cord seal
- PVC enclosure is resistant to moisture, wind, flame, and ultra-violet rays
- Separate alarm and pump control circuitry provided on terminal strip
- Control system is UL listed to meet or exceed industry safety standards

Specifications

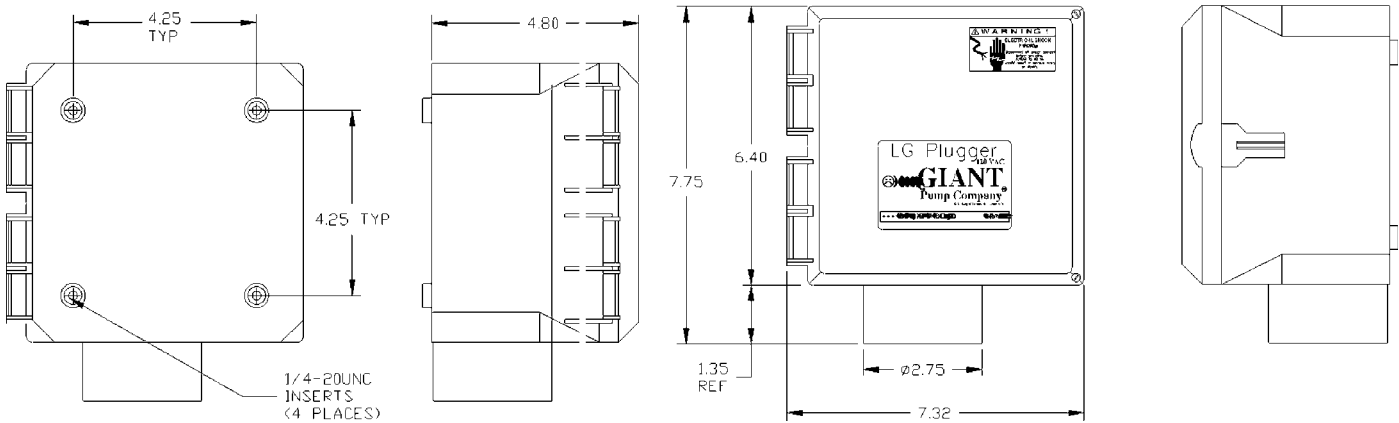
- Riser extension, coupling, and washers
- Custom liquid-tight cable seal
- Electrical conduit hub

Options (LG Plugger is available with)

- 101HW – Indoor alarm system
- 303HWXT – Indoor/outdoor alarm system

The LG Plugger box provides a convenient location to connect all wiring required for a typical pumping station installation. The junction box employs a receptacle to accept a 120 VAC or 230 VAC piggyback plug and a pump plug. The Plugger also features an easy-to-use terminal strip, which can be used for connecting an alarm system in the junction box. The Plugger package ensures a liquid-tight seal and strain relief for the cable entering the junction box from the pumping station.

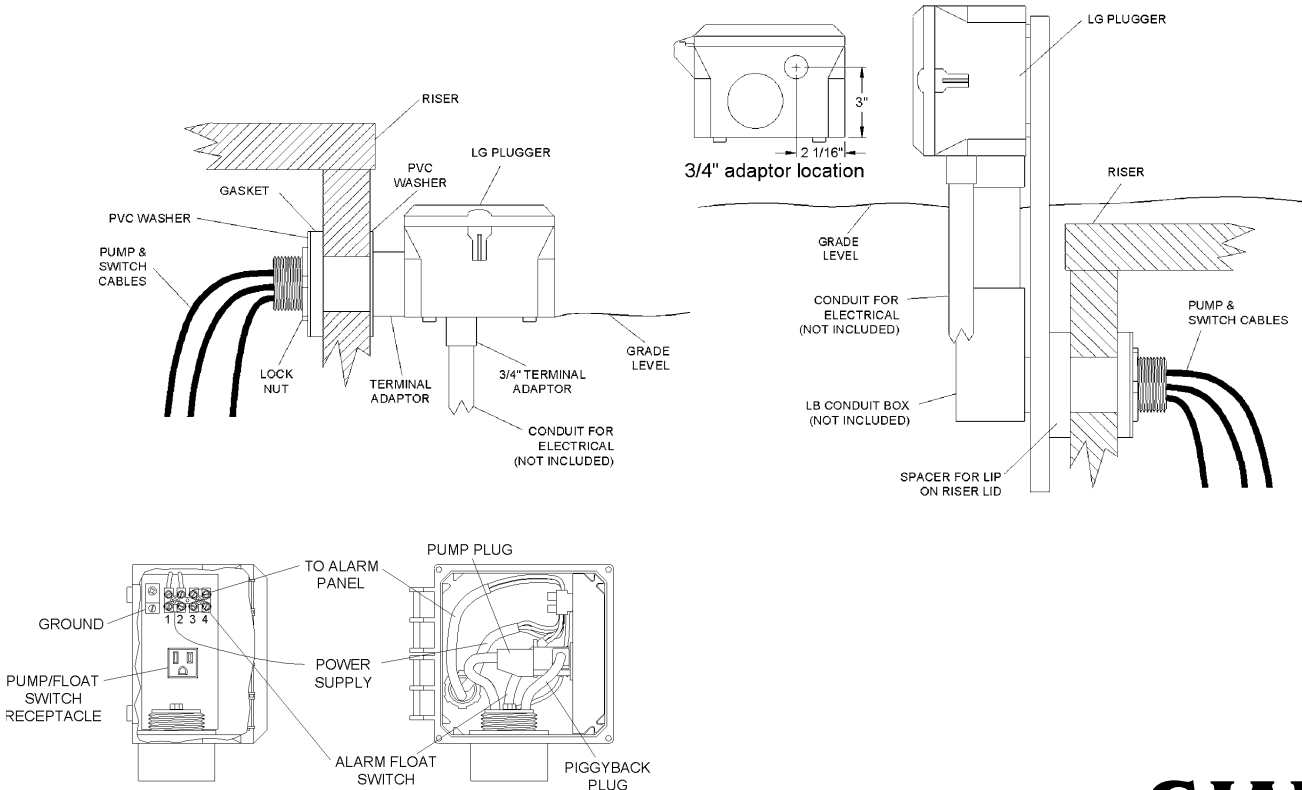
LG PLUGGER JUNCTION BOXES



Specifications

Model No.	Item No.	Volts	Hz	Phase	F.L. Amps	Includes	Weight (lbs.)
JBP120V	513290	120	60	1	0 to 15	N/A	3.5
JBP120V-TAI	513292	120	60	1	0 to 15	101HW – Alarm System	7.5
JBP120V-TAXT	513294	120	60	1	0 to 15	303HWXT – Alarm System	6.5
JBP230V	513291	230	60	1	0 to 15	N/A	3.5
JBP230V-TAI	513293	230	60	1	0 to 15	101HW – Alarm System	7.5
JBP230V-TAXT	513295	230	60	1	0 to 15	303HWXT – Alarm System	6.5

Typical Installations



LittleGIANT®
 PO Box 12010 • Oklahoma City, OK 73157
 Phone: 800.701.7894 • Fax: 800.701.8046
 E-mail: customerservice@littlegiant.com
 Form 995269 — 09/2002