

FEATURES & SPECIFICATIONS

INTENDED USE — General illumination for rough service (vandal resistant - industrial applications). Ideal for tunnels, canopies, shipping docks, refrigerated areas or any non-hazardous environments that requires a wet location listing. **Certain airborne contaminants can diminish integrity of acrylic.** [Click here for Acrylic Environmental Compatibility table for suitable uses.](#)

CONSTRUCTION — Housing made from impact-resistant, UV-resistant fiber-glass-reinforced polyester with cold rolled steel enclosed wire way.

Five-stage iron-phosphate pretreatment ensures superior paint adhesion and rust resistance. Painted parts finished with high-gloss, baked white enamel.

OPTICS — High-impact acrylic 50% DR diffuser standard. Secured to fully-gasketed housing by captive tamper-resistant cam-action latches. (6 latches provided on 4' fixtures, 10 on 8' fixture.)

PLEASE NOTE: The standard 4' diffuser is 2-1/4" deep, and the standard 8' diffuser is 3" deep. To order the 4' diffuser so that it matches the depth of the 8' diffuser, order the ARDP option. The 8' diffuser is not available in the 2-1/4" depth.

ELECTRICAL — Ballast is thermally protected, resetting, Class P, HPF, non-PCB, UL listed. CSA certified ballast is standard. Rapid start lamps are sound rated A. Standard combinations are CBM approved and conform to UL 935.

INSTALLATION — Suitable for surface, chain or stem mounting.

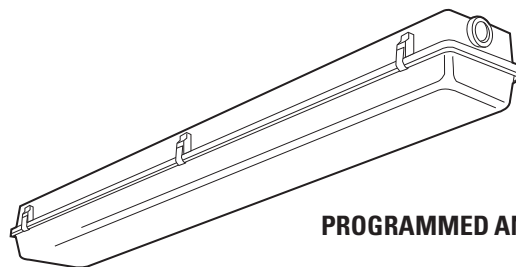
LISTING — UL listed (standard). CSA Certified (see Options). UL listed for 25°C ambient and wet locations covered ceiling installations only.

NOTE: Specifications subject to change without notice.

Catalog Number	
Notes	Type

Rough Service Wet Location Industrial

VRI



T8/T5

PROGRAMMED AND RAPID START

4' length

Specifications

Length: 50 (1270)

98 (2489)

Width: 8-1/8 (206)

Fixture Depth: 5-5/8 (143)

All dimensions are inches (millimeters) unless otherwise specified.

ORDERING INFORMATION

For shortest lead times, configure product using **standard options (shown in bold)**.

Example: VRI 2 40 120 ES GLR

VRI								
Series		Lamps ¹	Lamp type		Diffuser	Voltage	Options	
VRI	Rough	1	32	32W T8 (48")	(blank)	120	ELDW	Emergency battery pack (nominal 300 lumens) ⁷
	Service	2	28	28W T5 ³		277	EL5DW	Emergency battery pack (nominal 500 lumens) ⁷
	wet	3 ²	54	54W T5HO	DP	347	EL6DW	Emergency battery pack (nominal 600 lumens) ⁷
	location					MVOLT⁶	EL14DW	Emergency battery pack (nominal 1400 lumens) ⁷
industrial					PCL		GEB	Electronic ballast, <20% THD
							GEB10IS	Electronic ballast, <10% THD, instant start
							GEB10RS	Electronic ballast, <10% THD, rapid start ⁸
							GLR	Internal fast-blow fuse
							GMF	Internal slow-blow fuse
							RIF1	Radio interference filter, one per fixture
							CSA	Listed and labeled to comply with Canadian Standards
							NOM	Listed and labeled to comply with Mexican Standards
							WLF	Wet location fittings (one pair, installed top)

NOTES:

1 Lamps not included.

2 T8 only.

NOTES:

1 Lamps not included.

2 T8 only.

3 Two-lamp only.

4 Deep lens is standard on 8' fixtures.

5 Standard depth lens available.

6 Electronic ballast 120-277V. Must specify GEB10IS.

7 Luminaires ordered with the **DW** option (Example: **EL5DW**) will bear the UL Emergency Lighting Equipment label for damp or wet locations, depending on the fixture. 900 lumens for T5HO.

8 Not available with MVOLT.

Accessories:

Order as separate catalog number.

RK1 T20BIT Hex-base driver bit, Torx TX20, for tamper-resistant screws with center reject pin.

RK1 T20DRV Torx TX20 screwdriver for use with tamper-resistant screws with center reject pin.

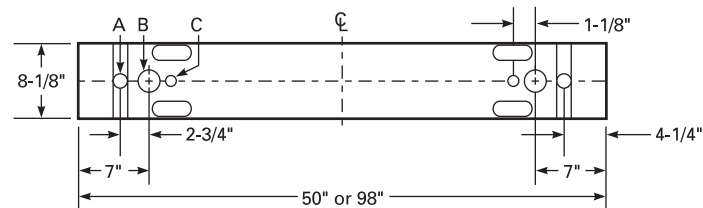
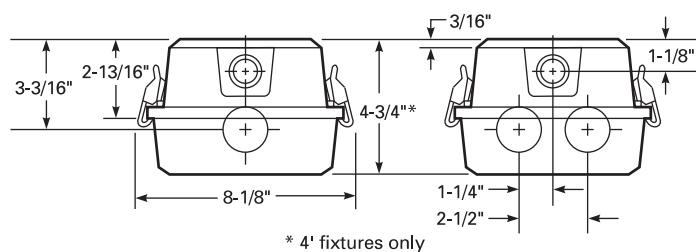
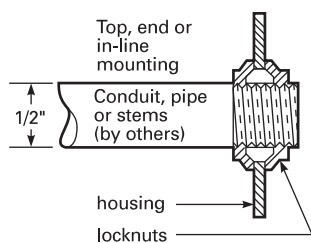
WLF Wet location fittings (one pair, not installed).

VRI High Output

MOUNTING DATA

For unit or row installation, surface mounting. Drill holes through housing at appropriate locations.

VRI - Includes gasketed wet location fittings on ends for power feeding/mounting. Fitting is threaded for 1/2" rigid conduit (optional WLF for top mounting). Attach to surface using fasteners and sealing washers (by others) appropriate to ceiling materials.



A = 11/16" Dia. K.O. (2)

B = 1 1/8" Dia. K.O. (2)

C = Location dimple (2)

Dimensions subject to change without notice.

PHOTOMETRICS

Available upon request.