

FEATURES & SPECIFICATIONS

INTENDED USE

Provides an LED lighting platform to deliver general ambient lighting for surface-mount ceiling applications. Light engine delivers long life and excellent color to ensure a quality, low-maintenance light installation. Ideal for use in kitchens, offices, hallways, corridors, foyers, bedrooms, closets, utility work areas and more.

CONSTRUCTION

The Catenary is constructed of an acrylic diffuser flanked by decorative steel end caps in either a brushed nickel or bronze finish. The diffuser provides even illumination and softens the appearance of the LEDs for improved aesthetics.

OPTICS

The Catenary has a selectable color temperature switch for 300K, 4000K, and 5000K. The 48IN produces 3800 lumens at 4000K (See Lighting Facts labels for others), both at 50,000 hours life.

The extruded acrylic diffuser minimizes LED image and provides high-angle brightness control.

ELECTRICAL

Long-life LEDs, coupled with a high-efficiency driver, provide extended service life. Standard input = 42 watts, 90 lumens per watt. Fixture is rated to deliver L70 performance at 50,000 hours and operates at 120 volts, 60Hz.

Works with most standard incandescent dimmers (see list of approved dimmers).

LISTINGS

CSA Listed to US and Canadian safety standards. Listed for damp locations. ENERGY STAR® certified.

WARRANTY

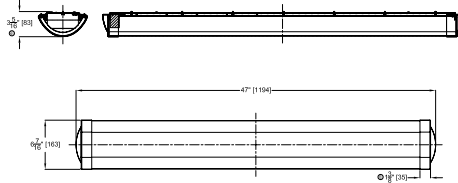
5-year limited warranty. Complete warranty terms located at www.acuitybrands.com/CustomerResources/Terms_and_conditions.aspx

NOTE: Actual performance may differ as a result of end-user environment and application.

All values are design or typical values, measured under laboratory conditions at 25 °C. Specifications subject to change without notice.

Specifications

Width:	6.4 (16.3)
Length:	47 (119.4)
Depth:	3.3 (8.3)
Weight:	5.95 (2.7kg)



All dimensions are inches (centimeters) unless otherwise indicated.

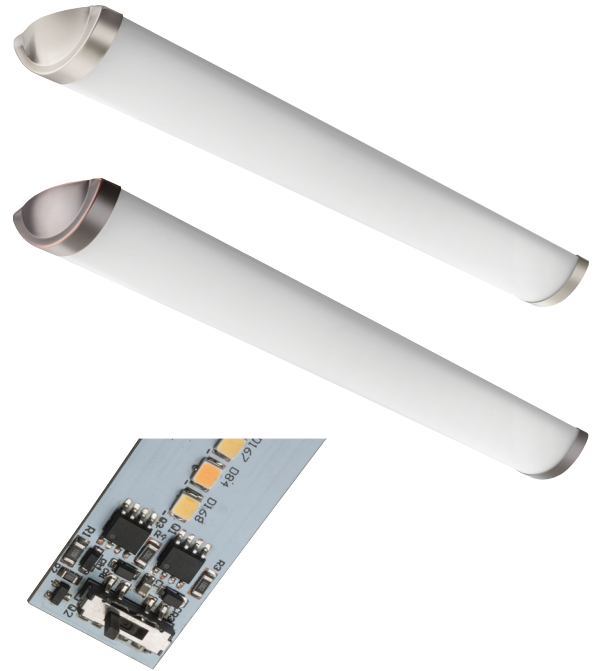
Catalog Number
Notes
Type

Decorative Indoor

Catenary

Linear Flush Mount with Selectable Color Temperature

LINEAR LED



ORDERING INFORMATION

For shortest lead times, configure product using **bolded options**.

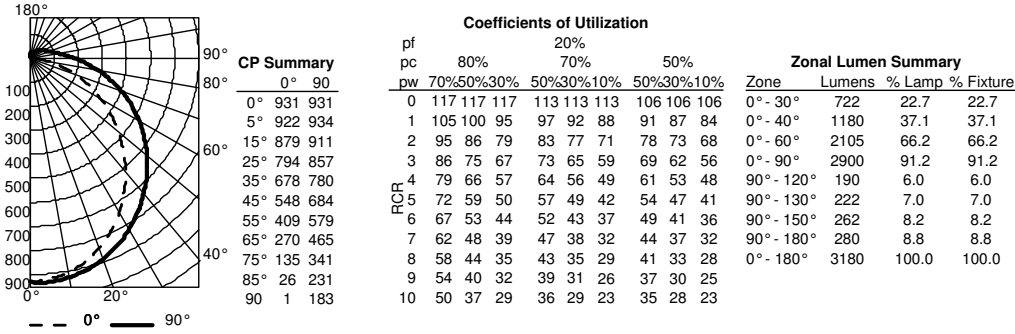
Example: FMLCCLS 48IN 30K40K50K 90CRI BN

Series	Length	Color temperature	CRI	Finish
FMLCCLS LED Linear Catenary	48IN 4' Nominal	30K40K50K	90CRI >90	BN Brushed nickel BZ Bronze

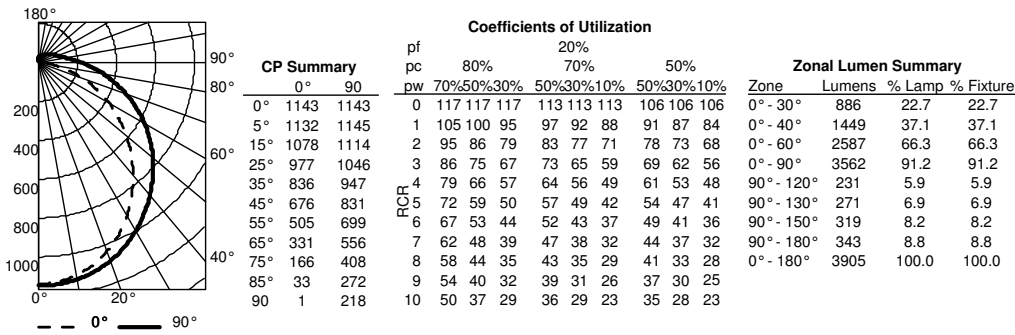
LED Linear Flush Mount Catenary

PHOTOMETRICS

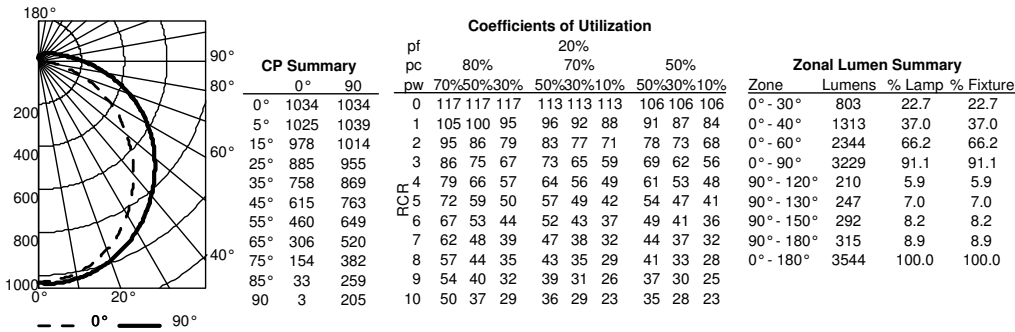
FMLCCLS 48IN 30K 90CRI, 3,180 delivered lumens, test no. ISF 35478 A, tested in accordance to IESNA LM-79.



FMLCCLS 48IN 40K 90CRI, 3,905 delivered lumens, test no. ISF 35478 B, tested in accordance to IESNA LM-79.



FMLCCLS 48IN 50K 90CRI, 3,544 delivered lumens, test no. ISF 35478 C, tested in accordance to IESNA LM-79.



LED Linear Flush Mount Catenary

LIGHTING FACTS

LED lighting facts
A Program of the U.S. DOE

Light Output (Lumens) 3100
Watts 44.26
Lumens per Watt (Efficacy) 70.04

Color Accuracy
Color Rendering Index (CRI) 92

Light Color
Correlated Color Temperature (CCT) 3000 (Bright White)

Warm White | Bright White | Daylight
2700K | 3000K | 4500K | 6500K

All results are according to IESNA LM-79-2008: *Approved Method for the Electrical and Photometric Testing of Solid-State Lighting*. The U.S. Department of Energy (DOE) verifies product test data and results.

Visit www.lightingfacts.com for the *Label Reference Guide*.

Registration Number: NJSM-PCRXR1 (8/23/2017)
Model Number: FMLCCLS 48IN 30K 90CRI
Type: Luminaire - Decorative

LED lighting facts
A Program of the U.S. DOE

Light Output (Lumens) 3800
Watts 42
Lumens per Watt (Efficacy) 90.48

Color Accuracy
Color Rendering Index (CRI) 92

Light Color
Correlated Color Temperature (CCT) 4000 (Bright White)

Warm White | Bright White | Daylight
2700K | 3000K | 4500K | 6500K

All results are according to IESNA LM-79-2008: *Approved Method for the Electrical and Photometric Testing of Solid-State Lighting*. The U.S. Department of Energy (DOE) verifies product test data and results.

Visit www.lightingfacts.com for the *Label Reference Guide*.

Registration Number: NJSM-UYNVQS (8/23/2017)
Model Number: FMLCCLS 48IN 40K 90CRI
Type: Luminaire - Decorative

LED lighting facts
A Program of the U.S. DOE

Light Output (Lumens) 3400
Watts 44.23
Lumens per Watt (Efficacy) 76.87

Color Accuracy
Color Rendering Index (CRI) 92

Light Color
Correlated Color Temperature (CCT) 5000 (Daylight)

Warm White | Bright White | Daylight
2700K | 3000K | 4500K | 6500K

All results are according to IESNA LM-79-2008: *Approved Method for the Electrical and Photometric Testing of Solid-State Lighting*. The U.S. Department of Energy (DOE) verifies product test data and results.

Visit www.lightingfacts.com for the *Label Reference Guide*.

Registration Number: NJSM-8HYOWG (8/23/2017)
Model Number: FMLCCLS 48IN 50K 90CRI
Type: Luminaire - Decorative

COMPATIBLE DIMMERS

The FMLBDRL is designed to operate with most standard Triac Based dimmers and is not compatible with 0-10v dimming systems. The following is a list of dimmers tested and does not imply any guarantee or warranty of compatibility with a particular application. Unlisted dimmers do not imply non-compatibility.

Manufacturer	Part number(s)
Leviton	6633-PA
Lutron	DV-603P
	S-600-P
Pass & Seymour	HCL453PTCCCV6
Synergy	ISD 600 I 120