

## FEATURES & SPECIFICATIONS

### INTENDED USE

Provides an LED lighting platform to deliver general or task lighting for residential and light commercial applications. Light engine delivers long life and excellent color to ensure a quality, low-maintenance light installation. Ideal for use in bathrooms, lavatories, hallways, corridors, stairways, utility areas and more.

### CONSTRUCTION

The Traditional Round Vanity is constructed of an acrylic diffuser with housings available in brushed nickel and bronze finishes. The white acrylic diffuser provides even illumination and softens the appearance of the LEDs for improved aesthetics.

### OPTICS

2' produces 1300 lumens, 3' produces 1900 lumens, and 4' produces 2500 lumens at 3000K with 50,000 hours of life.

Extruded acrylic diffuser is of highly transmissive material to minimize LED image and provides high-angle brightness control.

### ELECTRICAL

Long-life LEDs, coupled with a multivolt driver, provide extended service life. Standard input = 9.5 watts, (1'); 18 watts, (2'); 26 watts, (3'); 34 watts, (4'). Fixture is rated to deliver L70 performance at 50,000 hours and operates at 120-277 volts.

Use with non-dimmable switches only.

### LISTINGS

UL Listed to US and Canadian safety standards. Listed for damp locations. ENERGY STAR® certified.

### WARRANTY

5-year limited warranty. Complete warranty terms located at [www.acuitybrands.com/CustomerResources/Terms\\_and\\_conditions.aspx](http://www.acuitybrands.com/CustomerResources/Terms_and_conditions.aspx)

NOTE: Actual performance may differ as a result of end-user environment and application. All values are design or typical values, measured under laboratory conditions at 25 °C. Specifications subject to change without notice.

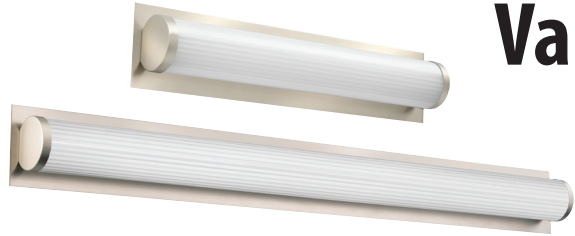
SPECIFICATIONS	2FT	3FT	4FT
<b>Length:</b>	23-7/16 (595)	35-1/4 (895)	47-1/16 (1195)
<b>Weight:</b>	7 (3.2)	9.7 (4.4)	12.4 (5.6)
<b>3000K Lumens (LPW)</b>	1363 (75)	2009 (77)	2670 (78)
<b>4000K Lumens (LPW)</b>	1437 (79)	2118 (81)	2815 (82)

All dimensions are inches (millimeters) unless otherwise indicated. Weights are pounds (kilograms).

Catalog Number
Notes
Type

Decorative Indoor

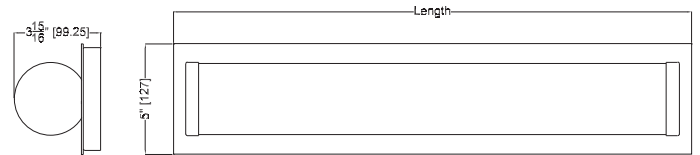
# Traditional Round Vanity



VANITY LED



ADA  
U.S. PATENT PENDING



### ORDERING INFORMATION

For shortest lead times, configure product using **bolded options**.

**Example:** FMVTRL 36IN MVOLT 30K 90CRI BN

Series	Length	Voltage	Color temperature	CRI	Finish
FMVTRL Traditional Round Vanity	<b>24IN</b> 2' Nominal	<b>MVOLT</b> MVOLT (120V-277V)	40K 4000 K <sup>1</sup>	<b>90CRI</b> >90	<b>BN</b> Brushed Nickel
	<b>36IN</b> 3' Nominal		35K 3500 K <sup>2</sup>		KR Chrome <sup>3</sup>
	<b>48IN</b> 4' Nominal		<b>30K</b> 3000 K		BZ Bronze <sup>3</sup>
			27K 2700 K <sup>2</sup>		

Replacement parts: Order as separate catalog number.	
<b>DFMVTRL 24IN</b>	2' Traditional Round replacement diffuser
<b>DFMVTRL 36IN</b>	3' Traditional Round replacement diffuser
<b>DFMVTRL 48IN</b>	4' Traditional Round replacement diffuser

### Notes

- 60-day lead time for non-stock color temperatures; minimum 50 order quantity.
- 90-day lead time for non-standard color temperatures; minimum 50 order quantity.
- 60-day lead time for non-stock finishes; minimum 50 order quantity.

# LED Vanity Traditional Round

## PHOTOMETRICS

Distribution Curve

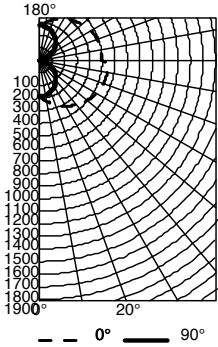
Distribution Data

Output Data

Coefficient of Utilization

Illuminance Data at 30" Above Floor for a Single Luminaire

FMVTRL 48IN, 3000K LEDs, input watts: 33.3, delivered lumens: 2,551, LM/W=77, test no. LTL29645M, tested in accordance with IESNA LM 79-80.



### CP Summary

	0°	90°
0°	290	290
5°	309	288
15°	353	276
25°	395	254
35°	439	225
45°	478	188
55°	513	143
65°	536	95
75°	546	46
85°	547	6
90°	492	6

### Coefficients of Utilization

pf	20%								
	80%			70%			50%		
pc	70%	50%	30%	50%	30%	10%	50%	30%	10%
0	107	107	107	99	99	99	84	84	84
1	95	89	84	82	78	74	69	65	62
2	85	76	69	70	64	58	59	54	49
3	77	66	58	61	53	47	51	45	40
4	70	58	49	53	45	39	45	38	34
5	64	51	42	47	39	33	40	33	29
6	59	46	37	42	34	29	36	29	25
7	54	41	33	38	30	25	32	26	21
8	50	37	29	34	27	22	29	23	19
9	47	34	26	31	24	19	27	21	17
10	44	31	23	29	22	17	24	19	15

### Zonal Lumen Summary

Zone	Lumens	% Lamp	% Fixture
0° - 30°	231	9.1	9.1
0° - 40°	390	15.3	15.3
0° - 60°	758	29.7	29.7
0° - 90°	1298	50.9	50.9
90° - 120°	538	21.1	21.1
90° - 130°	716	28.1	28.1
90° - 150°	1035	40.6	40.6
90° - 180°	1253	49.1	49.1
0° - 180°	2551	100.0	100.0

## LIGHTING FACTS

Lithonia Lighting

**LED lighting facts**  
A Program of the U.S. DOE

---

**Light Output (Lumens)** **1302**

**Watts** **17.68**

**Lumens per Watt (Efficacy)** **73.64**

---

**Color Accuracy**  
Color Rendering Index (CRI) **93**

---

**Light Color**  
Correlated Color Temperature (CCT) **3000 (Bright White)**

All results are according to IESNA LM-79-2008: Approved Method for the Electrical and Photometric Testing of Solid-State Lighting. The U.S. Department of Energy (DOE) verifies product test data and results.

Visit [www.lightingfacts.com](http://www.lightingfacts.com) for the Label Reference Guide.

Registration Number: NJSM-121HG (2/11/2016)  
Model Number: FMVTRL 24IN 30K 90CRI  
Type: Luminaire - Industrial

Lithonia Lighting

**LED lighting facts**  
A Program of the U.S. DOE

---

**Light Output (Lumens)** **1919**

**Watts** **25.27**

**Lumens per Watt (Efficacy)** **75.94**

---

**Color Accuracy**  
Color Rendering Index (CRI) **93**

---

**Light Color**  
Correlated Color Temperature (CCT) **3000 (Bright White)**

All results are according to IESNA LM-79-2008: Approved Method for the Electrical and Photometric Testing of Solid-State Lighting. The U.S. Department of Energy (DOE) verifies product test data and results.

Visit [www.lightingfacts.com](http://www.lightingfacts.com) for the Label Reference Guide.

Registration Number: NJSM-RCCPN1 (2/11/2016)  
Model Number: FMVTRL 36IN 30K 90CRI  
Type: Luminaire - Industrial

Lithonia Lighting

**LED lighting facts**  
A Program of the U.S. DOE

---

**Light Output (Lumens)** **2610**

**Watts** **33.29**

**Lumens per Watt (Efficacy)** **78.4**

---

**Color Accuracy**  
Color Rendering Index (CRI) **93**

---

**Light Color**  
Correlated Color Temperature (CCT) **3000 (Bright White)**

All results are according to IESNA LM-79-2008: Approved Method for the Electrical and Photometric Testing of Solid-State Lighting. The U.S. Department of Energy (DOE) verifies product test data and results.

Visit [www.lightingfacts.com](http://www.lightingfacts.com) for the Label Reference Guide.

Registration Number: NJSM-7FFWLH (2/11/2016)  
Model Number: FMVTRL 48IN 30K 90CRI  
Type: Luminaire - Industrial