

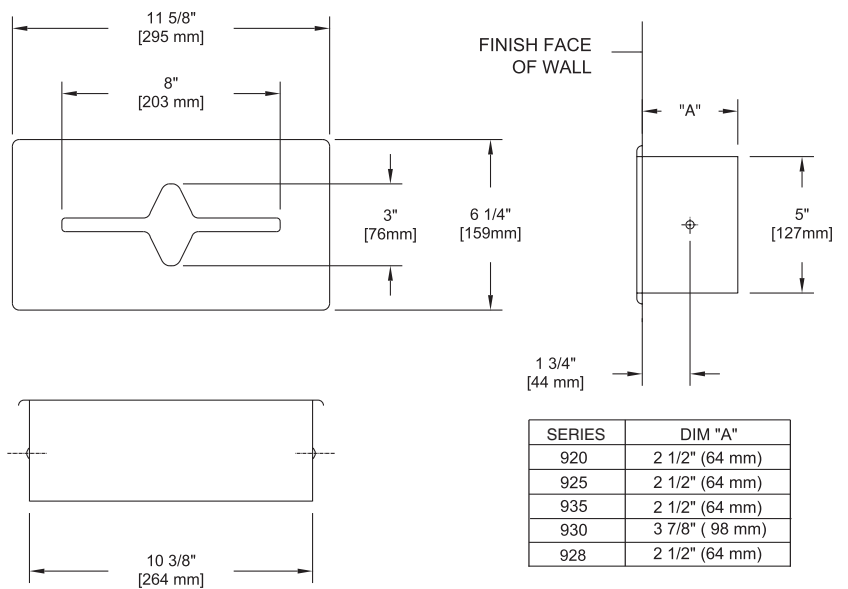
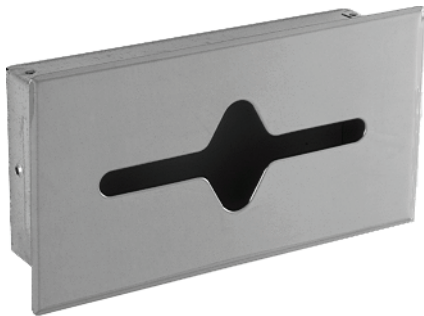
# TECHNICAL DATA

**LIBERTY HARDWARE®**  
MANUFACTURING CORPORATION

**A Masco Company**

140 Business Park Drive • Winston-Salem, NC 27107  
800.542.3789 • T 336.769.4077 • F 336.769.1839  
www.libertyhardware.com

## RECESSED TISSUE CABINET 920 & 930 Series



SERIES	DIM "A"
920	2 1/2" (64 mm)
925	2 1/2" (64 mm)
935	2 1/2" (64 mm)
930	3 7/8" (98 mm)
928	2 1/2" (64 mm)

**MATERIALS:** Recess Box -- 24 gauge galvanized steel  
Snap Insert -- 26 gauge electro galvanized steel  
Cover -- 24 gauge

**INSTALLATION:** Cut out wall opening 10 5/8" x 5 1/4" x 2 5/8" depth (4" depth for 921,926,930,930SF). If frame in, mount box into frame with 2- #7 x 1" flathead zinc plated steel screws provided, through holes in sides of box. If not framed in, mount box into wall opening with optional 901R wall clamp (included with B920PB). Snap cover on recess box.

**SPECIFICATION:** Recess tissue cabinet shall be model \_\_\_\_\_ (fill in model number) by Liberty Hardware Manufacturing Corporation.