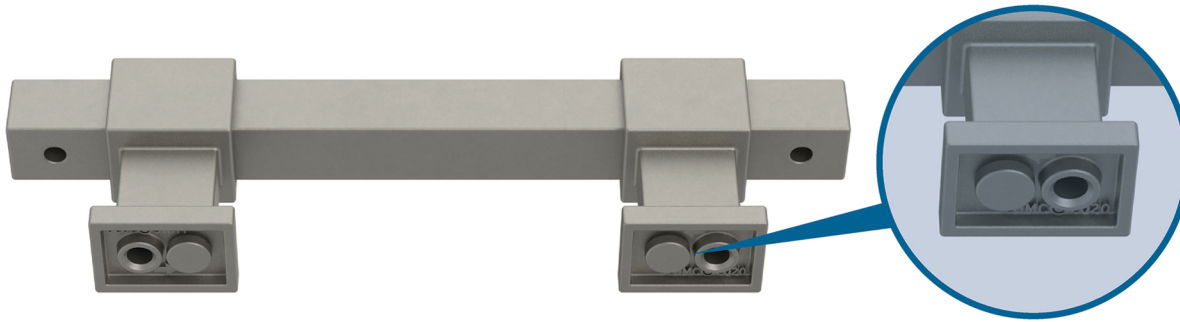


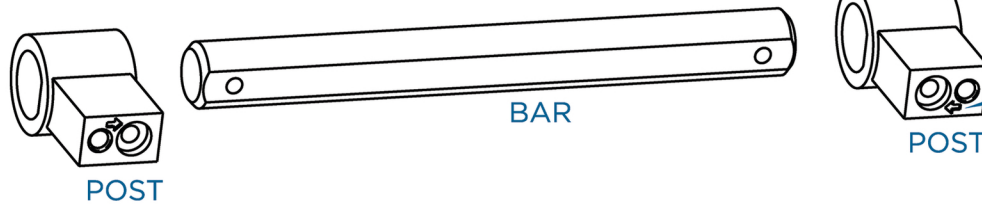
Adjusta-Pull™ Installation Instructions



Adjusta-Pulls feature two holes on each side. One to secure post to the bar, one for mounting to cabinet drawer.

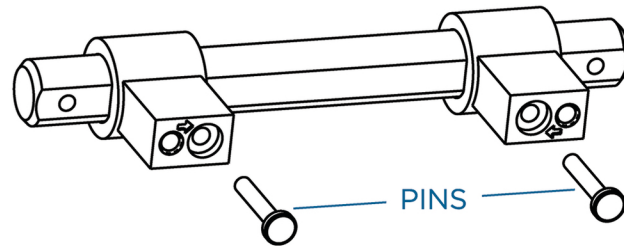
1

Slide posts onto bar, ensuring that the arrows on the bottom of the posts point inward.



2

Insert the pins into the holes in the bottom of the posts.



3

Mount assembly loosely onto face of drawer or door using a screwdriver and the screws provided. Align bar as desired, then tighten screws.

