

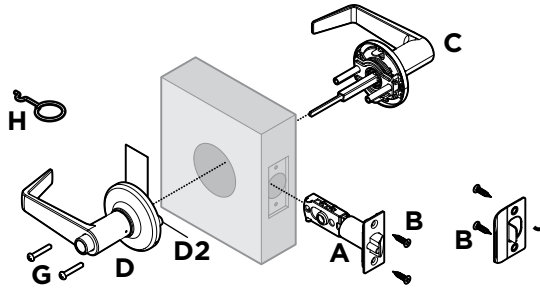
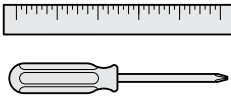
Light Commercial Lever
48774 / O2 CP/BP

Quick Installation Guide
Guía de instalación rápida
Guide d'installation rapide

Functions: Passage, Privacy, Entry, Storeroom
Funciones: Paso, Privacidad, Entrada, Almacén
Fonctions : Passage, Privacit , Entr e, D barras

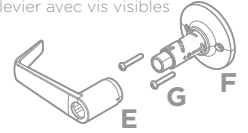
Tools Needed

Herramientas necesarias
Outils n cessaires



Lever with exposed screws

La palanca con los tornillos visibles
Le levier avec vis visibles



U.L. Strike
El recibidor U.L.
La g che U.L.

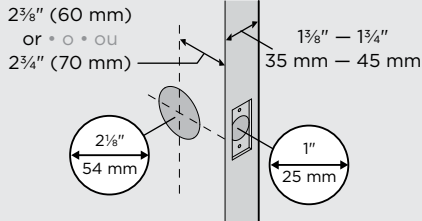


1 Check Dimensions

Revisar las medidas
V rifier les dimensions

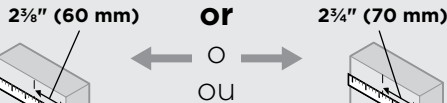
See drilling instructions on page 4 if needed.

Ver las instrucciones para taladrar en la p gina 4 si es necesario.
Voir les instructions de per age sur la page 4 si n cessaire.



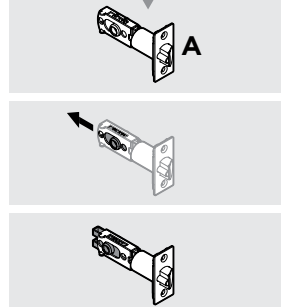
2 Adjust Latch "A" (if needed)

Ajuste el pestillo "A" (si necesario)
Ajuster le verrou "A" (si n cessaire)



Proceed to Step 3.

Vaya al paso 3.
Passez   l' tape 3.



3

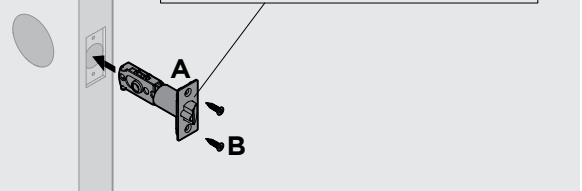


Correctly orient latch "A"

Orientar correctamente el pestillo "A"
Orienter correctement le p ne "A"

Jamb
Jamba • Montant

Angle
 ngulo • Angle



4

Lever handle faces away from latch.

La manija va orientada hacia fuera del pestillo.
Le levier est orient  dans le sens oppos  du verrou.

