



INSTALLATION GUIDE

KPF-2110

Single Lever Kitchen Faucet
With Pull-Out Sprayer

Congratulations on the purchase of your new Kraus plumbing fixture!

Please keep the box and packaging materials until your product is completely installed. If you have any questions, require technical assistance, or have any problems with your product:



DO NOT RETURN TO STORE

Please contact our Customer Service Team

1-800-775-0703 / customerservice@kraususa.com

Have the model number available, and retain a copy of your receipt with purchase date for reference.

If for any reason this product does not meet your expectations, please be sure to repack this product in the original box and packaging material to avoid damage during transit.

Prior to Installation

- Make sure that the cold and hot water lines are turned off
- Wrap all threaded connections with Teflon tape. Always wrap in a clockwise direction
- Cover your drain to avoid losing parts
- Do not disassemble the main faucet body, as it has been factory assembled by Kraus for stress-free installation.
- Using condition: Working pressure at 0.05-1.0MPa (including cold & hot water pressure) with applicable water temperature: 4°C-90°C
- Remove the check valve assembly (24) at the end of the hose (10)
- Discard plastic caps from the hot and cold inlets

Tools you will need:

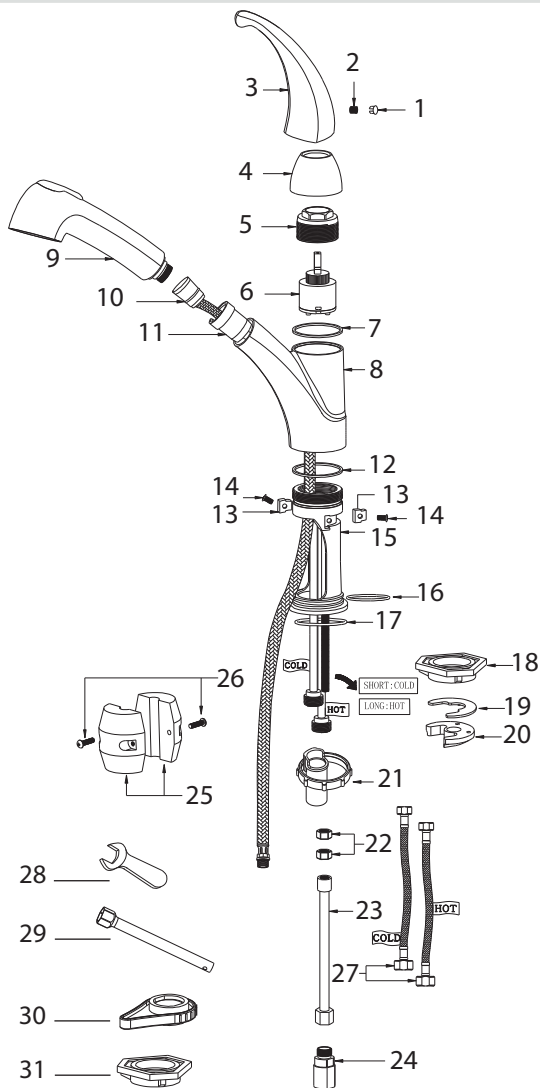


**Phillips
Screwdriver**



**Adjustable
Wrench**

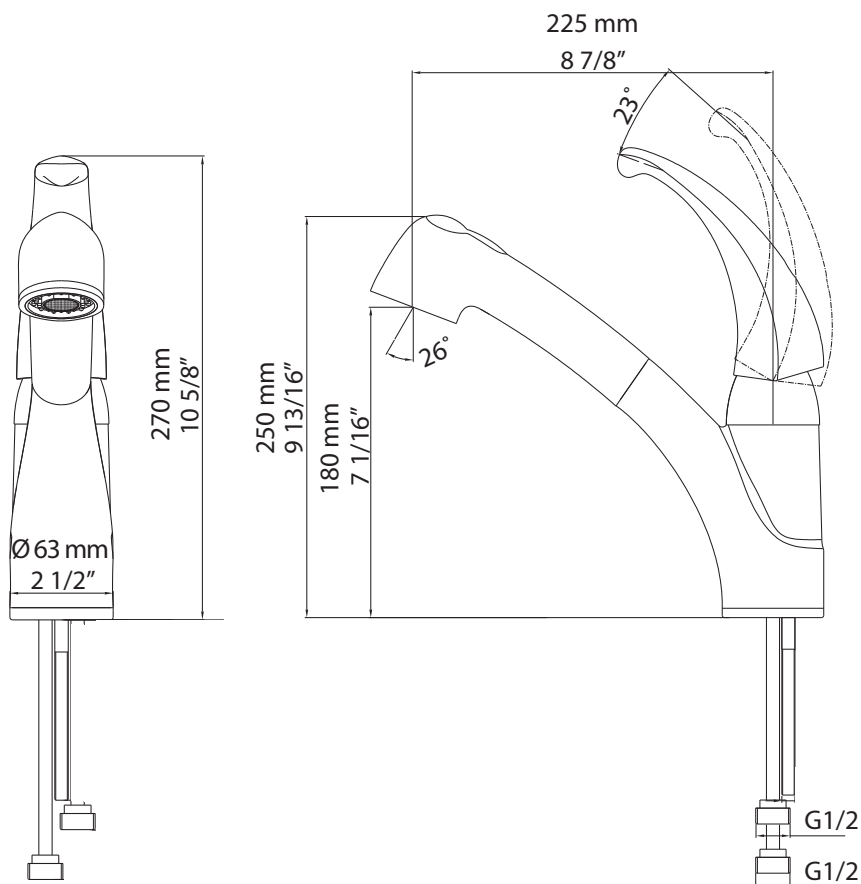
KPF-2110 Diagram and Parts List



Included Parts:

1. Index Button
2. Set Screw
3. Handle
4. Cartridge Cover
5. Locking Nut
6. Cartridge
7. O-Ring
8. Faucet Body
9. Spray Head
10. Hose
11. Plastic Cover
12. O-Ring
13. Noise Silencer
14. M4 Screw
15. Faucet Body Base
16. O-Ring
17. O-Ring
18. Faucet Extender
19. Rubber U- Washer
20. Metal U-Washer
21. Plastic Base Hose Ring
22. A. Mounting Nut
B. Mounting Nut
23. Extending Pipe
24. Check Valve Assembly
25. Weight
26. Screws (2)
27. Hot & Cold Waterlines (2)
28. Wrench
29. Spanner
30. Aerator Key
31. Spacer

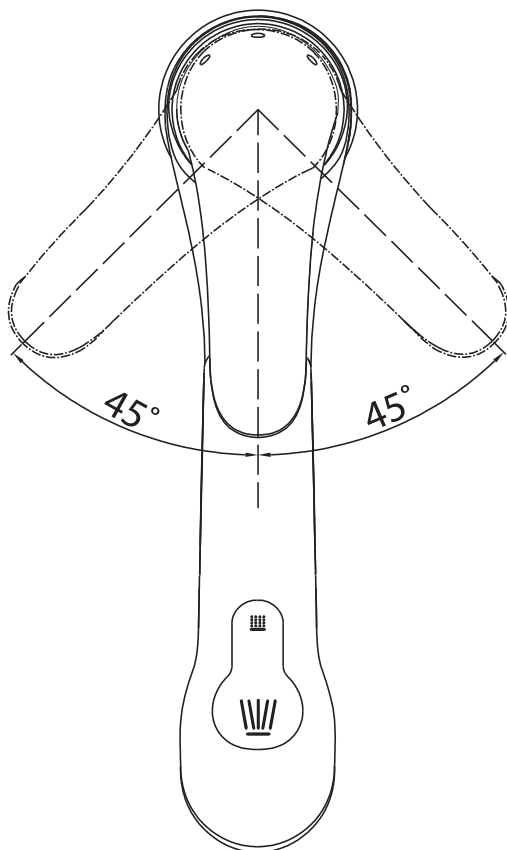
Dimension Drawings



Safety Tips

- If soldering the water connections when installing the faucet, remove the O-rings, cartridges, and washers before applying any heat
- Protect your eyes with safety glasses when cutting or soldering

Dimension Drawings

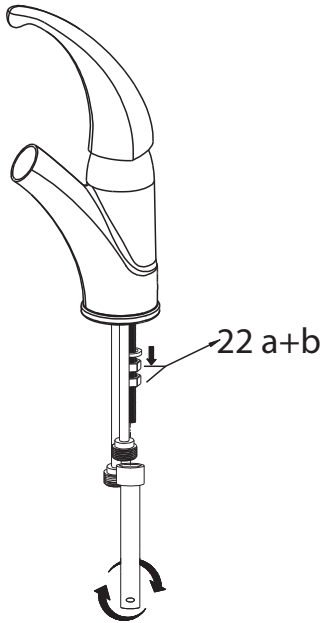


Safety Tips

- Do not overtighten fixing screws/nuts. Tighten finger-tight, then use a wrench/screwdriver to tighten the fixing screw/nut until snug

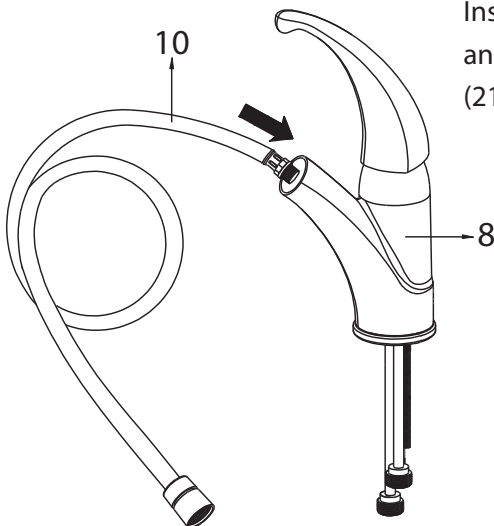
Faucet Installation Procedures

Step 1



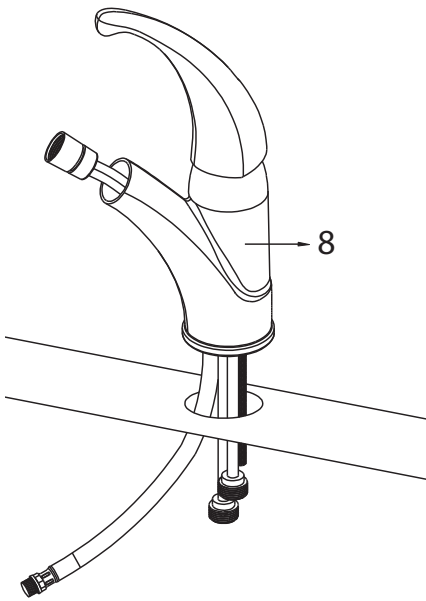
Remove metal nuts (22a and 22b)
from end of mounting pipe

Step 2

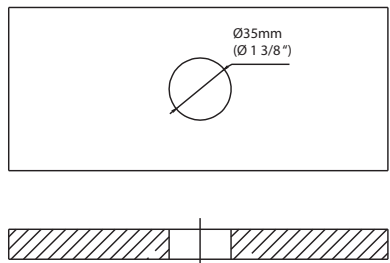


Insert hose (10) into faucet body (8)
and through plastic base hose ring
(21)

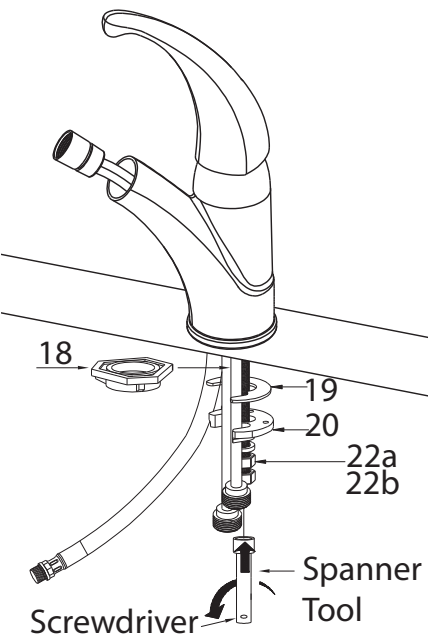
Step 3



Insert faucet body (8) on
pre-drilled hole 1-3/8"



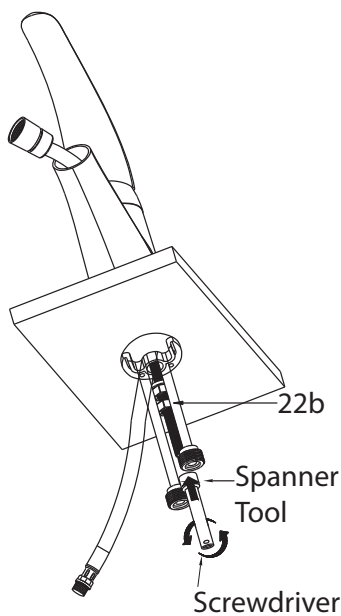
Step 4



Install faucet extender (18), rubber
u-washer (19), and metal u-washer (20)
on mounting pipe until it touches base
of countertop. Place metal nut (22a)
onto mounting pipe and tighten with
provided spanner (29) until snug

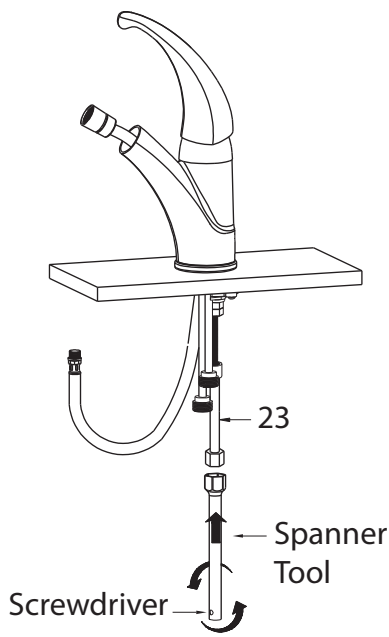
Installer Tip: Screwdriver can
be placed through opening of
spanner for additional leverage

Step 5



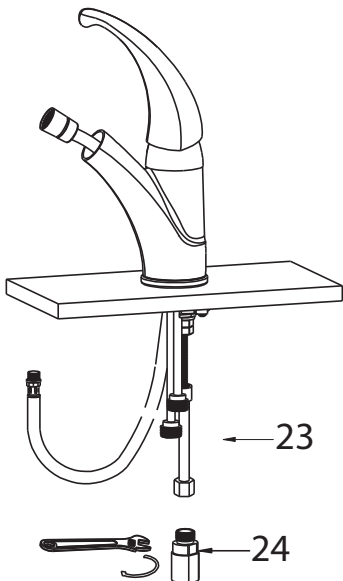
Place metal nut (22b) on mounting pipe and tighten with provided spanner until snug underneath countertop

Step 6



Secure extending pipe (23) on mounting pipe and tighten with provided spanner (29) until snug

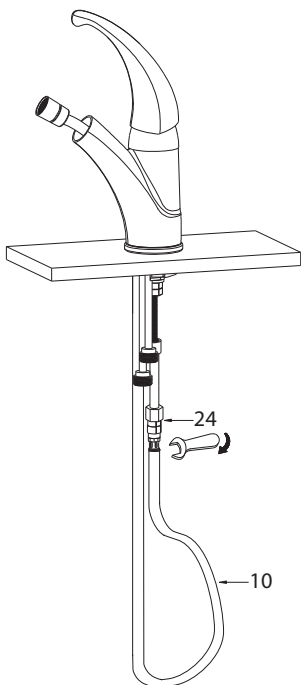
Step 7



Secure check valve assembly (24) onto extending pipe (23). Tighten with adjustable wrench until snug

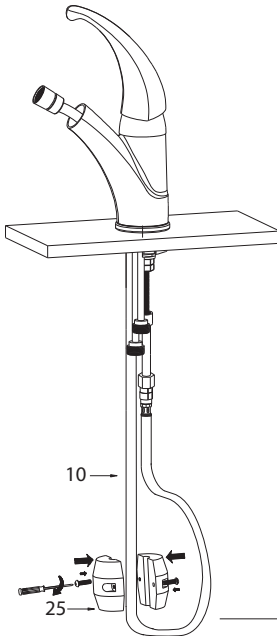
Installer Tip: Check if O-rings are installed in check valve assembly (24) before installing hose (10)

Step 8



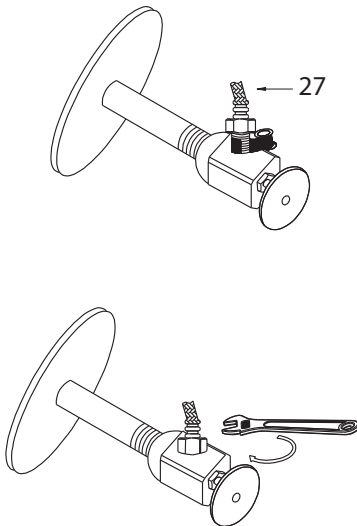
Secure end of hose (10) onto check valve assembly (24) and tighten with adjustable wrench until snug

Step 9



Install weight (25) at lowest point (vertically) on hose (10) and tighten screws (26) with Phillips head screwdriver

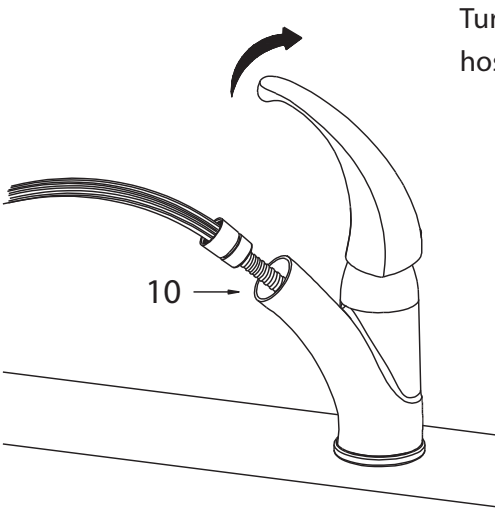
Step 10



Connect hot & cold waterlines (27) to faucet (hot: long & cold: short), and install them on angle stops. Tighten with adjustable wrench until snug

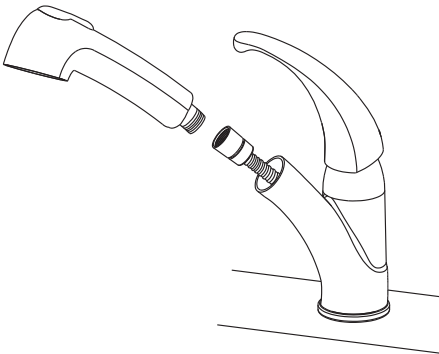
Installer Tip: Check if O-rings are installed on both ends of hot & cold waterlines (30)

Step 11

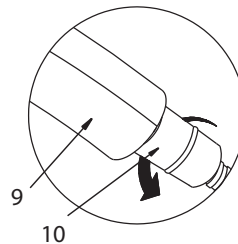


Turn faucet on while holding tip of hose (10) to flush any debris

Step 12



Secure the spray head (9) onto hose (10) and hand-tighten only



Installer Tip: Check if O-ring is visible in hose (10) prior to reinstalling spray head (9)

Trouble - Shooting

If you have followed the instructions carefully and your faucet still does not work properly, take the following corrective steps:

| PROBLEM | CAUSE | ACTION |
|---|---|--|
| Leakage under the handle | Locking nut has come loose | Loosen the set screw with a hex wrench located at the base of the handle. Remove the handle and unscrew cartridge holder by hand. Tighten locking nut with an adjustable wrench or shower wrench (if applicable). |
| Water will not shut off completely | Cartridge may need to be adjusted or replaced | Loosen the set screw with a hex wrench located at the base of the handle. Remove the handle and unscrew cartridge cover by hand. Unscrew the locking nut with an adjustable wrench or shower wrench (if applicable). Remove ceramic disc cartridge. Check for cracks |
| Leaking between spray head and the hose | Spray head may be loose or washer is not seated correctly in the hose connection | Tighten the spray head by hand until snug. Make sure the washer is seated correctly |
| Low/No pressure | Check valve assembly may be clogged with debris or washers are not seated correctly | Remove check valve assembly and soak it in warm soapy water to remove any debris for 5 minutes. Make sure the washers are seated correctly |

Care & Maintenance

*To keep the product clean & shining, follow the steps below:

1. Rinse with clean water & dry with a soft cloth
2. Do not clean with soaps, acid, polish, abrasives, or harsh cleaners
3. Do not use cloth with a coarse surface
4. Unscrew the aerator and clean when necessary

*This installation manual is subject to change without further notice.



Codes/Standards Applicable:



NSF/ANSI Standard 61 certified by IAPMO
NSF/ANSI Standard 372 certified by IAPMO



Meets ASME A112.18.1M/A112.18.1
1.75gpm 6.6L/min maximum

FAUCET WARRANTY

Kraus products are manufactured and tested to the highest quality standards by Kraus USA Inc. ("Kraus"). Kraus extends this warranty to the original purchaser for personal household use of the "**Faucet**" in its original location. The warranty is non-transferable.

Kraus warrants the structure and finish of the product to be free from defects in material and workmanship under normal usage for the lifetime of the product. The warranty commences from the initial date of purchase by the owner or trade professional, from an authorized Kraus dealer, through the lifetime of the original owner or end-user.

Kraus warrants the mechanical component (**sprayhead assembly**) of the product to be free from defects in material and workmanship under normal usage for a period of one (1) year. The warranty commences from the initial date of purchase by the owner or trade professional, from an authorized Kraus dealer, through the one (1) year term of the original owner or end-user.

Kraus warrants the mechanical component (**cartridge**) of the product to be free from defects in material and workmanship under normal usage for a period of five (5) years. The warranty commences from the initial date of purchase by the owner or trade professional, from an authorized Kraus dealer, through the five (5) year term of the original owner or end-user.

Any product reported to the authorized dealer or to Kraus as being defective within the warranty period will be repaired or replaced with a product of equal value at the option of Kraus. This warranty extends to the original owner or end-user, and is not transferable to a subsequent owner.

RESTRICTIONS

This warranty does not cover antediluvian, discontinued, or display products, whether such items are purchased at discount outlets, unauthorized dealers, and/or sold on clearance. This warranty does not cover instances of negligence, misuse, abuse, improper installation, carelessness, accident, hard water or mineral deposits, exposure to corrosive materials, misapplication, damages caused by improper maintenance, alteration of the product, or failure to follow care or installation instructions enclosed with your product. Avoid using abrasive cleaners such as powders, bleach, ammonia, alcohol, or chlorine. Avoid using abrasive pads, steel wool, or wire brushes, as these will damage and wear down the finish.

This warranty does not apply to Products that have not been installed or operated in accordance with instructions supplied by Kraus and all applicable rules, regulations, and legislation pertaining to such installations.

This warranty does not apply unless the Kraus product is installed by a fully insured and licensed trade professional. Kraus insists that such professionals have experience in the installation of bathroom and kitchen manufactured goods. This warranty does not cover labor charges or costs of removal and reinstallation of said product. This warranty does not allow recovery of incidental or consequential damages, such as loss of use, delay, property damage, or other consequential damages, and Kraus accepts no liability for such damages.

This warranty does not cover Marine or Outdoor Installation.

Except as otherwise provided above, Kraus makes no warranties, expressed or implied, including warranties of merchantability and fitness for a particular purpose, or compliance with any code. Shipping charges will be covered for

the first (1) year of the warranted replacement part or product (HI, AK, and Puerto Rico shipping charges may apply). International shipping fees are not included.

COMMERCIAL WARRANTY

Kraus extends the above warranty for a period of one (1) year to purchasers of products for industrial, commercial, and business use.

All incidental or consequential damages are specifically excluded. No additional warranties, express or implied, are given, including but not limited to any implied warranty of merchantability or fitness for a particular purpose.

Some states do not allow the exclusion or limitation of incidental or consequential damages or limitations on how long an implied warranty lasts, so the above limitations or exclusions may not apply to you.

This warranty gives you specific legal rights, and you may also have other rights which vary from state to state.

If you are a homeowner please contact a Kraus Customer Service Representative at:

Kraus USA, Inc.
12 Harbor Park Drive
Port Washington, NY 11050
Toll-free 800-775-0703
Customerservice@kraususa.com

If you are a plumbing contractor or trade professional please contact a Kraus Pro Representative at:

Kraus USA, Inc.
12 Harbor Park Drive
Port Washington, NY 11050
516-801-8955
Proservice@kraususa.com

If you are an Authorized Partner please contact a Partner Support Representative at:

Kraus USA, Inc.
12 Harbor Park Drive
Port Washington, NY 11050
516-801-8954
Partnersupport@kraususa.com

In requesting warranty service, please be ready to provide:

1. Proof of purchase.
2. A description of the problem.

Download the Kraus Care & Maintenance Guide at:

<http://www.kraususa.com/maintenance>

IMPORTANT

Register Your Kraus Product

Activate Your Warranty

Access Premium Customer Support

Get Product Information

REGISTER TODAY

<http://www.kraususa.com/registration>



Kräus®
www.kraususa.com