

## Features

- Catalyzed conversion varnish provides a durable moisture-resistant finish.
- Furniture-style inset construction for doors and drawers.
- Two doors and one full- and two shallow-drawers behind one drawer front.
- Three-way adjustable slow-close door hinges with 110-degree opening capability for easy cabinet access.
- Full-extension 18" depth drawers with slow-close under-mount slides for smooth opening.
- Solid wood drawers with dovetail construction.
- Optional drawer organizer (sold separately).
- Coordinates with other products in the Jute™ collection.
- Wall-hung design offers a clean, streamlined look.
- Door and drawer pulls are sold separately.

## Material

- Solid wood and veneers.

## Recommended Accessories

2898  
2789  
K-5461 Bathroom Vanity Top  
K-5433 Bathroom Vanity Top  
K-5441 Bathroom Vanity Top  
K-99686 Knob  
K-99689 Handle

## Optional Accessories

99679  
K-99665 Framed Mirror  
K-99681 Side Mount Electrical Outlets  
K-99682 General Storage  
K-99683 Makeup Storage  
K-99684 Drawer Dividers  
K-99672 Two-Drawer Bridge  
K-99668 Lap Drawer  
K-99676 Filler Strip  
K-99001 Mirrored Cabinet  
K-99007 Mirrored Cabinet  
K-99009 Mirrored Cabinet  
99662  
99678



## Codes/Standards




CARB P2

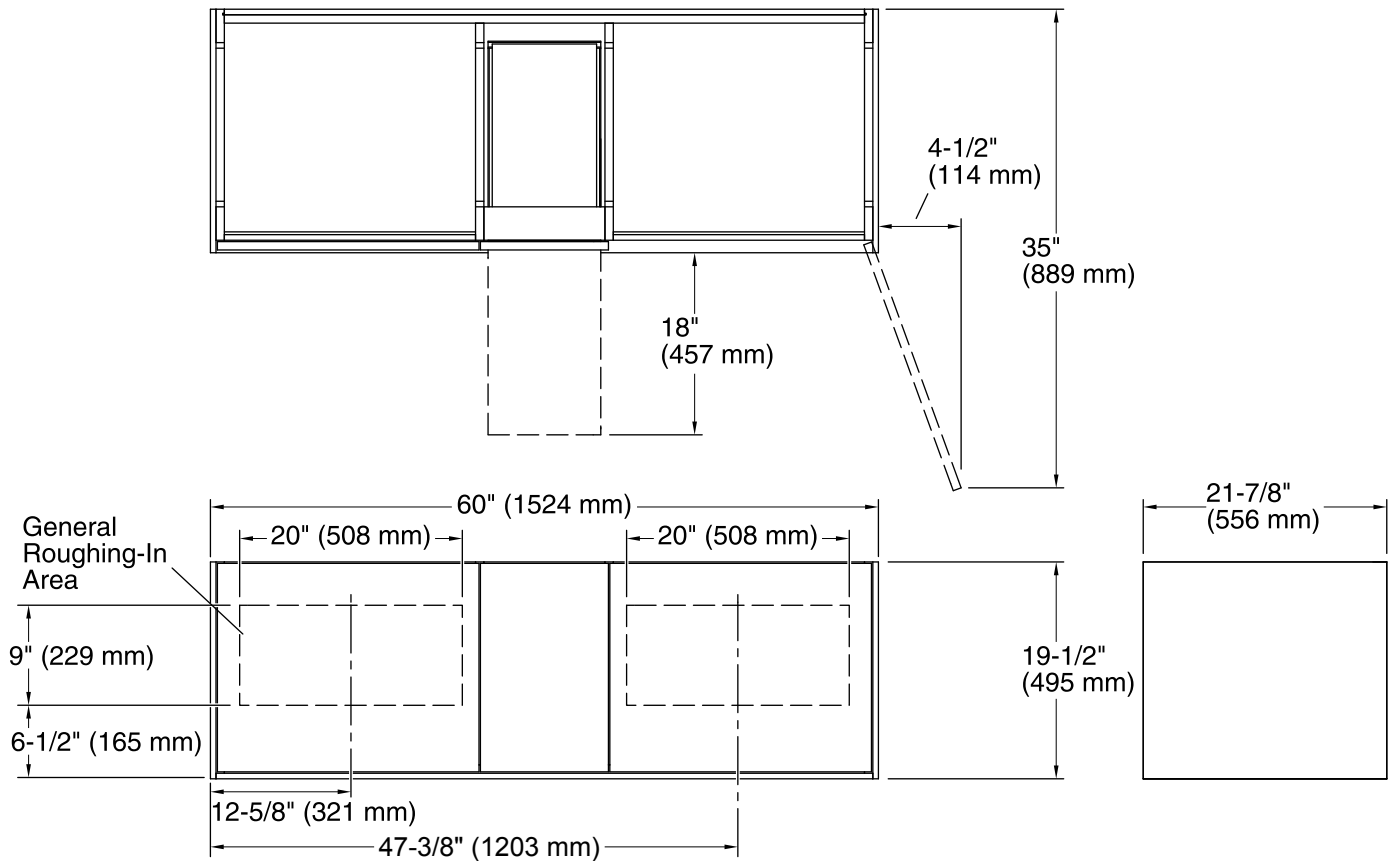
## KOHLER® One-Year Limited Warranty

See website for detailed warranty information.

## Available Color/Finishes

*Color tiles intended for reference only.*

| Color  | Code | Description    |
|--|------|----------------|
|  | 1WA  | Linen White    |
|  | 1WN  | Corduroy Teak  |
|  | 1WM  | Walnut Flax    |
|  | 1WJ  | Jersey Oak     |
|  | 1WL  | Laurentil Silk |
|  | 1WK  | Satin Oak      |
|  | 1WP  | Ebony Velour   |
|  | 1WT  | Mohair Grey    |
|  | 1WU  | Batiste Black  |



## Technical Information

All product dimensions are nominal.

Vanity type: Wall-mount

## Notes

Install this product according to the installation guide.

Decorative cabinet hardware is not supplied. Refer to the KOHLER bath accessories line for recommended cabinet hardware to complement your vanity.

Select the type of fastener based upon the wall material. Two 500 lb (227 kg) minimum load bearing fasteners are recommended.