

KOHLER®

Roughing-In

K-1124-VBLAW, K-1124-VBRAW ARCHER® 6' VIBRACOUSTIC® BATH WITH BASK HEATED SURFACE

Product Information

Applicable product:	
6' VibrAcoustic bath with Bask heated surface, left drain (shown)	K-1124-VBLAW
6' VibrAcoustic bath with Bask heated surface, right drain	K-1124-VBRAW

Fixture: Approx. measurements for comparison only	
Bathing well:	
Basin area, bottom	51-3/8" (1305 mm) x 21" (533 mm)
Basin area, top	64-1/2" (1638 mm) x 30-1/2" (775 mm)
Weight	96 lbs (43.5 kg)
To overflow:	
Water depth	15" (381 mm)
Capacity	72 gal (272.5 L)

Amplifier/control:	15 W (per channel)	120 V	50/60 Hz	-
Heater:	65 W	120 V	60 Hz	1.1 A

Required Electrical Service

Dedicated circuit required, protected with Class A Ground-Fault Circuit-Interrupter (GFCI) or Residual Current Device (RCD): 120 V, 15 A, 50/60 Hz

Installation Notes

Install this product according to the installation guide. Ensure that the interface, amplifier, and transducers are functional before completing the installation.

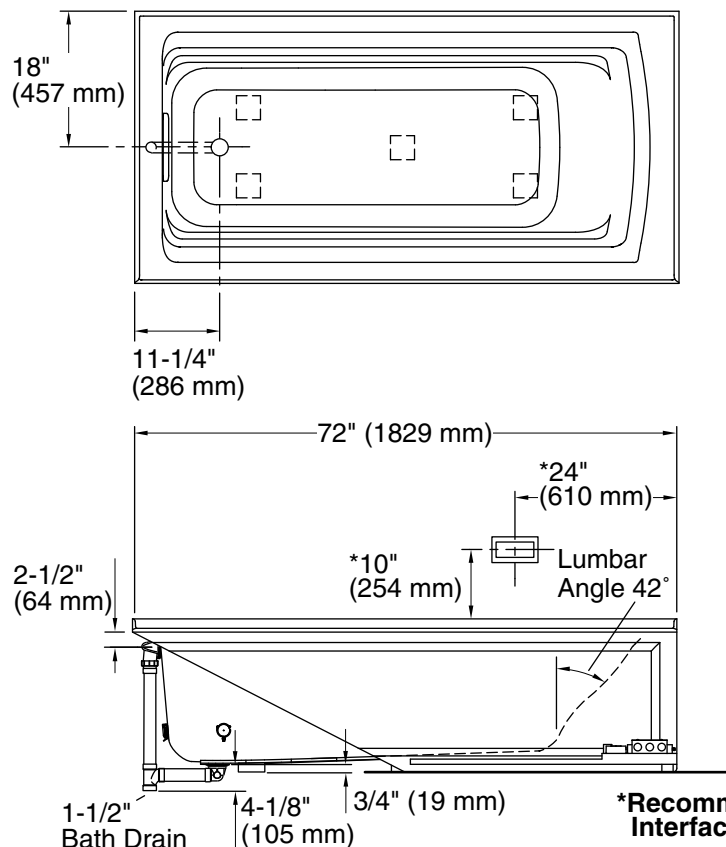
Control amplifier fits 16" (406 mm) center studs. 25' (7.6 m) cables are included.

Locate the bath within 24" (610 mm) of a GFCI-protected 120 V, 15 A grounded electrical outlet. A second grounded outlet within the wall framing must be within 24" (610 mm) of the planned control amplifier. One electrical service may be used for the entire bath and related electrical components.

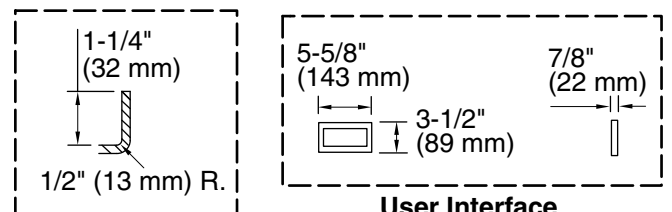
Floor support under this product must provide for a minimum of 40 lbs/square foot (195.3 kg/square meter) loading.

Will comply with **ADA** when installed per Section 607 Bathtubs of the 2010 ADA Standards for Accessible Design.

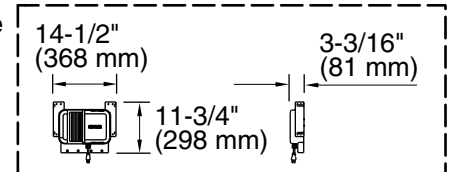
Fixture conforms to CSA B45.5/IAPMO Z124. All dimensions are nominal.



No change in measurements if connected with drain illustrated. (K-7272)



Integral Flange Detail



Control Amplifier

