



**Soho®**  
Wall-Mount Bathroom Sink  
**K-2053-NL**

**Features**

- Made from premium materials that withstand high-volume usage
- Constructed of vitreous china
- 20" x 18"
- Wall-mount installation
- 8" center drilling
- Drilled for concealed arm carrier
- With sealed overflow and soap dispenser drilling on left

**Recommended Accessories**

K-8998 P-Trap

**Components**

Additional included component/s: Hanger (2 Required).



ADA

CSA B651

OBC

**Codes/Standards**

ASME A112.19.2/CSA B45.1

ADA

ICC/ANSI A117.1

CSA B651

OBC

**KOHLER® One-Year Limited Warranty**

See website for detailed warranty information.

**Available Color/Finishes**

*Color tiles intended for reference only.*

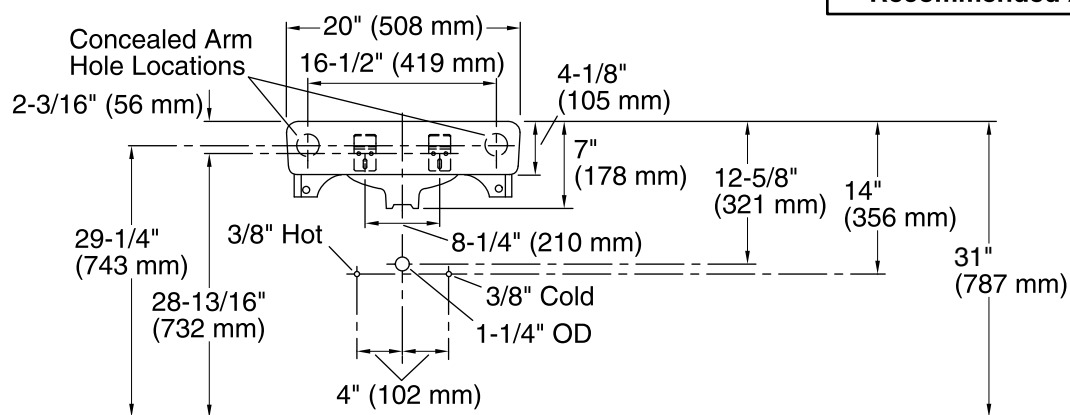
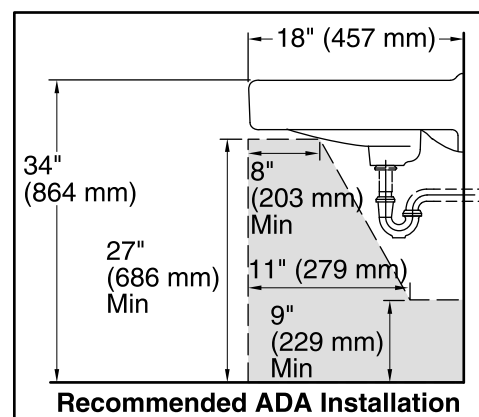
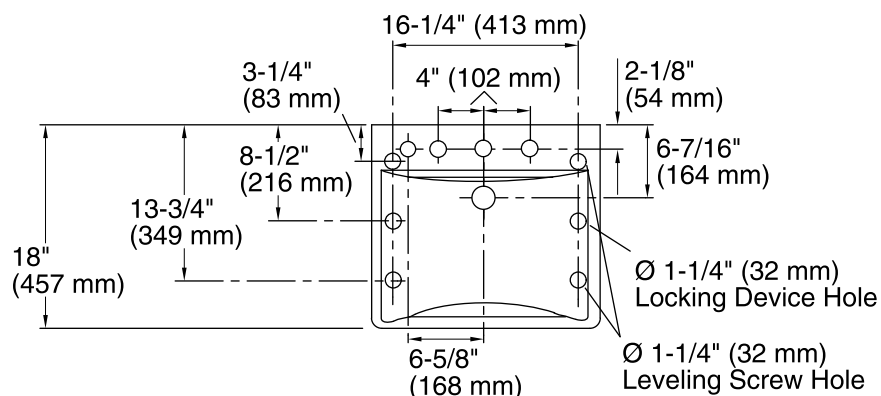
Color	Code	Description
-------	------	-------------



0	White
---	-------



**Soho®**  
Wall-Mount Bathroom Sink  
**K-2053-NL**



## Standard Installation

## Technical Information

All product dimensions are nominal.

Bowl configuration: Single

Installation: Wall-mount

Bowl area (Center)      Length: 18" (457 mm)

Width: 13" (330 mm)

With overflow: Yes

Water depth: 4-7/8" (124 mm)

Bowl area                      With overflow: Yes

Number of deck holes: 4

Faucet hole(s): 1-3/8" (35 mm)

Soap/Lotion hole: 1-1/4" (32 mm)

Drain hole: 1-3/4" (44 mm)

## Notes

Install this product according to the installation instructions.

If an arm carrier is used, select a soap dispenser with a 1" (25 mm) maximum shank diameter to avoid interference with the arm carrier.

Use a soap dispenser with adequate shank length to extend through the 4-1/8" (105 mm) sink thickness.

ADA, OBC, CSA B651 compliant when installed to the specific requirements of these regulations.