



Kingston™
Wall-Mount Bathroom Sink
K-2007

Features

- Made from premium materials that withstand high-volume usage
- Constructed of vitreous china
- 21-1/4"L x 18-1/8"W
- Wall-mount installation
- Faucet not included
- Includes wall hanger
- Drilled for concealed arm carrier

Recommended Accessories

K-8998 P-Trap

Components

Additional included component/s: Hanger (2 Required).



ADA	CSA B651	OBC
-----	----------	-----

Codes/Standards

ASME A112.19.2/CSA B45.1

ADA

ICC/ANSI A117.1

CSA B651

OBC

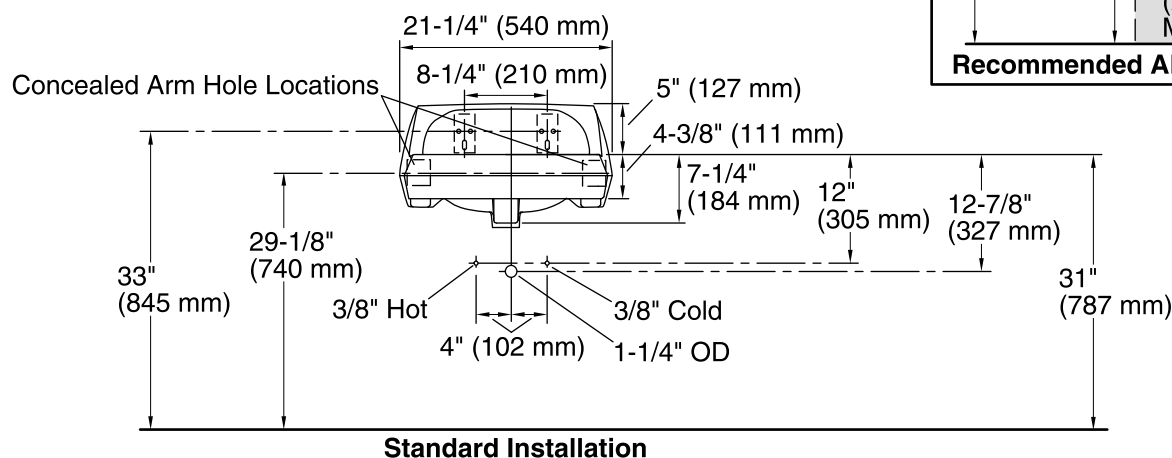
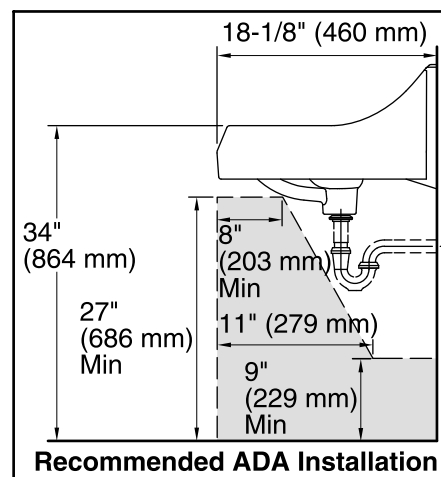
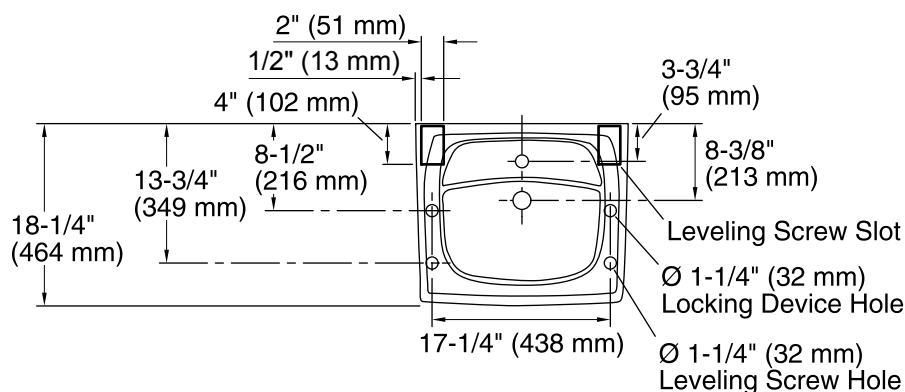
See website for detailed warranty information.

Available Color/Finishes

Color tiles intended for reference only.

Color	Code	Description
-------	------	-------------

	0	White
	47	Almond



Technical Information

All product dimensions are nominal.

Bowl configuration: Single

Installation: Wall-mount

Bowl area (Center) Length: 10" (254 mm)

Width: 15" (381 mm)

With overflow: Yes

Water depth: 3-1/4" (83 mm)

Bowl area With overflow: Yes

Number of deck holes: 1

Faucet hole(s): 1-3/8" (35 mm)

Soap/Lotion hole: 1-1/4" (32 mm)

Drain hole: 1-3/4" (44 mm)

Notes

Install this product according to the installation instructions.

ADA, OBC, CSA B651 compliant when installed to the specific requirements of these regulations.