



**Escale®**  
Drop-in Bathroom Sink  
**K-19029-8**

**Features**

- Fireclay.
- Drop-in.
- Generous curved rectangular basin.
- With overflow.
- Widespread faucet holes.
- Complements the Escale® suite.
- 23-5/8" (600 mm) x 17-1/2" (445 mm)

**Recommended Accessories**

K-14410-3 Widespread Bathroom Sink Faucet  
K-14410-4 Widespread Bathroom Sink Faucet  
19480

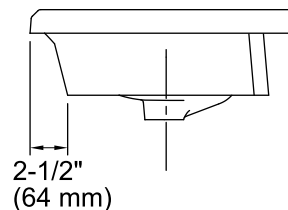
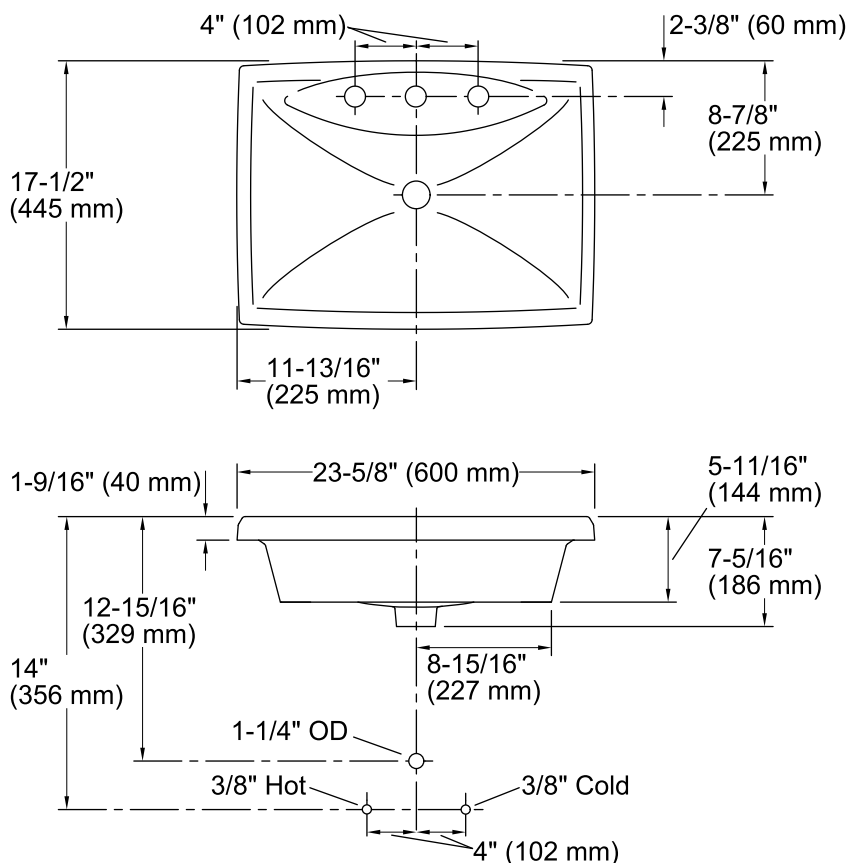


**Codes/Standards**

ASME A112.19.2/CSA B45.1

**KOHLER® One-Year Limited Warranty**

See website for detailed warranty information.



## Technical Information

All product dimensions are nominal.

Bowl configuration: Single

Installation: Drop-In

Bowl area (Only) Length: 23-11/16\" (602 mm)  
Width: 17-1/2\" (445 mm)  
Water depth: 3-1/2\" (89 mm)

Number of deck holes: 3

Faucet hole(s): 1-3/8\" (35 mm)

Drain hole: 1-3/4\" (44 mm)

Template: 1052864-7, required, included

## Notes

Install this product according to the installation instructions.

**NOTICE:** Countertop manufacturer or cutter must use the cut-out template provided with the product, or a current one provided by Kohler (call 1-800-4KOHLER). Kohler is not responsible for cutout errors when incorrect cut-out template is used.