

## Features

- KOHLER cast iron
- With overflow
- Single hole faucet
- 24" (610 mm) x 18" (457 mm)



ADA

CSA B651

OBC

## Codes/Standards

ASME A112.19.1/CSA B45.2

All applicable US Federal and State material regulations

ADA

ICC/ANSI A117.1

CSA B651

OBC

## KOHLER® Lifetime Limited Warranty for Cast Iron Components

See website for detailed warranty information.

## Available Color/Finishes

*Color tiles intended for reference only.*

Color	Code	Description
-------	------	-------------



0	White
---	-------

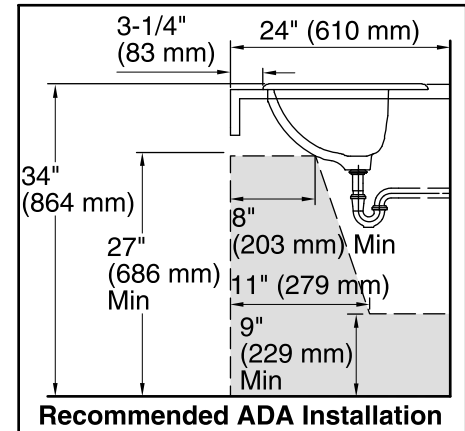
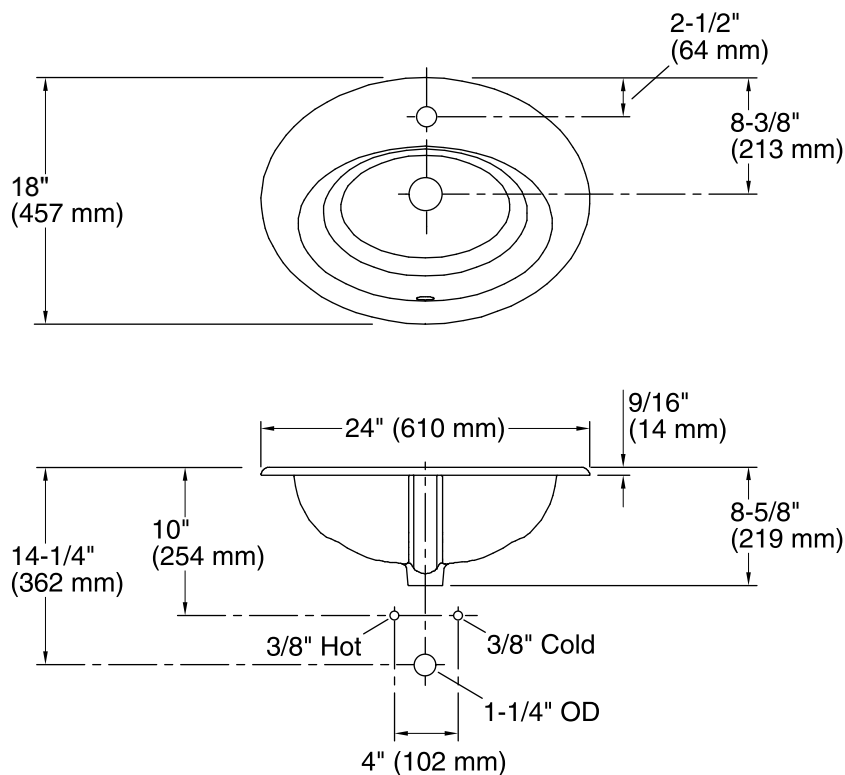


96	Biscuit
----	---------



47	Almond
----	--------





## Technical Information

All product dimensions are nominal.

Installation: Drop-In

Number of deck holes: 1

Faucet hole(s): 1-3/8" (35 mm)

Drain hole: 1-11/16" (43 mm)

Template: 114535-7, required, included

## Notes

Install this product according to the installation instructions.

**NOTICE:** Countertop manufacturer or cutter must use the current product template available at [www.kohler.com](http://www.kohler.com), or by calling 1-800-4KOHLER. Kohler Co. is not responsible for cutout errors when the incorrect cutout template is used.

ADA, OBC, CSA B651 compliant when installed to the specific requirements of these regulations.