

## Features

- KOHLER finishes resist corrosion and tarnishing.
- Conceals extra faucet holes on sink surface.
- For use with three-hole sinks.
- 10-1/2" (267 mm) x 2-1/2" (64 mm) x 1/2" (13 mm)

## Material

- Solid brass construction.



## Codes/Standards



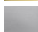



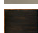
None Applicable

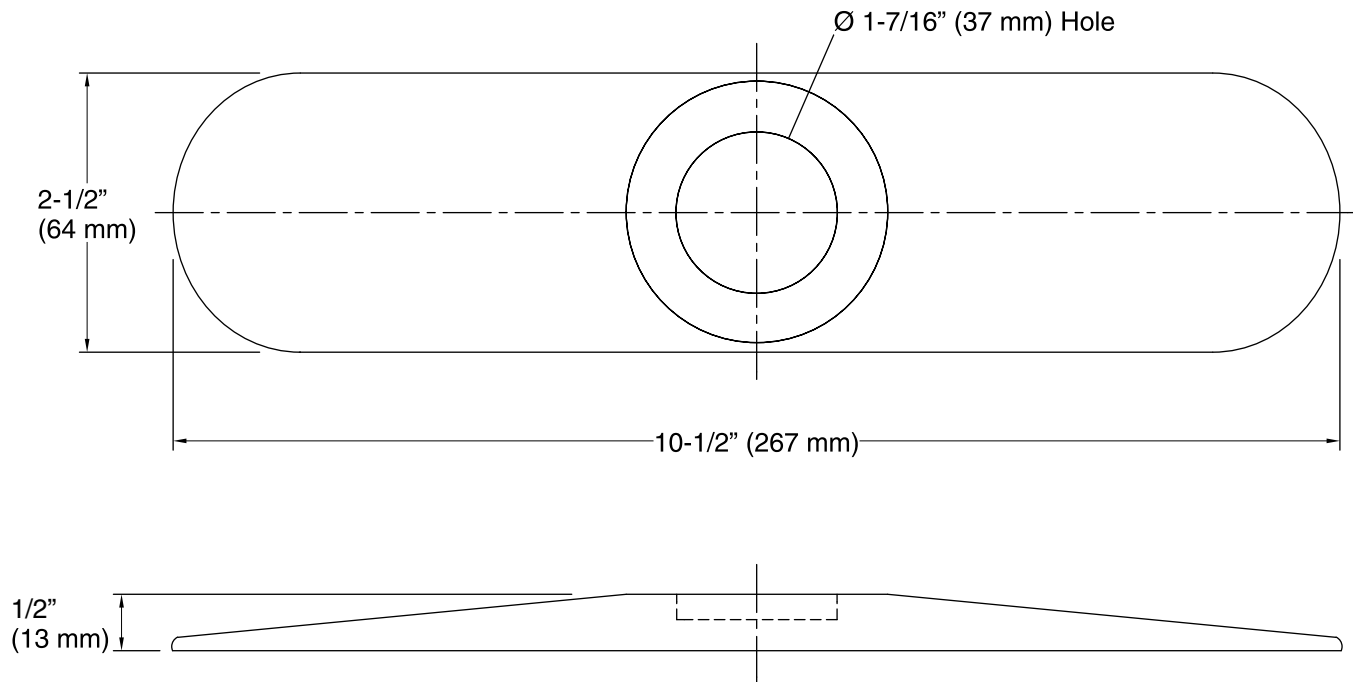
## KOHLER® Faucet Lifetime Limited Warranty

See website for detailed warranty information.

## Available Color/Finishes

*Color tiles intended for reference only.*

Color	Code	Description
	CP	Polished Chrome
	PB	Vibrant® Polished Brass
	G	Brushed Chrome
	BN	Vibrant® Brushed Nickel
	VS	Vibrant® Stainless
	BV	Vibrant® Brushed Bronze
	2BZ	Oil-Rubbed Bronze



### Technical Information

All product dimensions are nominal.

### Notes

Install this product according to the installation guide.