



ProFlex® 5454

4.5' Bath

K-1155-F



Features

- Spacious design accommodates up to two bathers.
- Corner layout minimizes footprint without compromising bathing area.
- Molded lumbar support and armrests offer extra comfort while bathing.
- Integral flange helps prevent water from seeping behind wall and simplifies alcove installation.
- Integral faucet deck.

Material

- Acrylic

Installation

- Corner alcove.

Recommended Accessories

K-1491 Bath/Whirlpool Pillow
K-1601 Bath/Whirlpool Footstop
K-7213 27" Cable Bath Drain
K-7214 27" Cable Bath Drain
K-11677 Bath Drain
K-24916 Wireless Music Kit
K-7259 Clearflo Bath Drain



Codes/Standards




CSA B45.5/IAPMO Z124
Greenguard UL 2818 - Gold

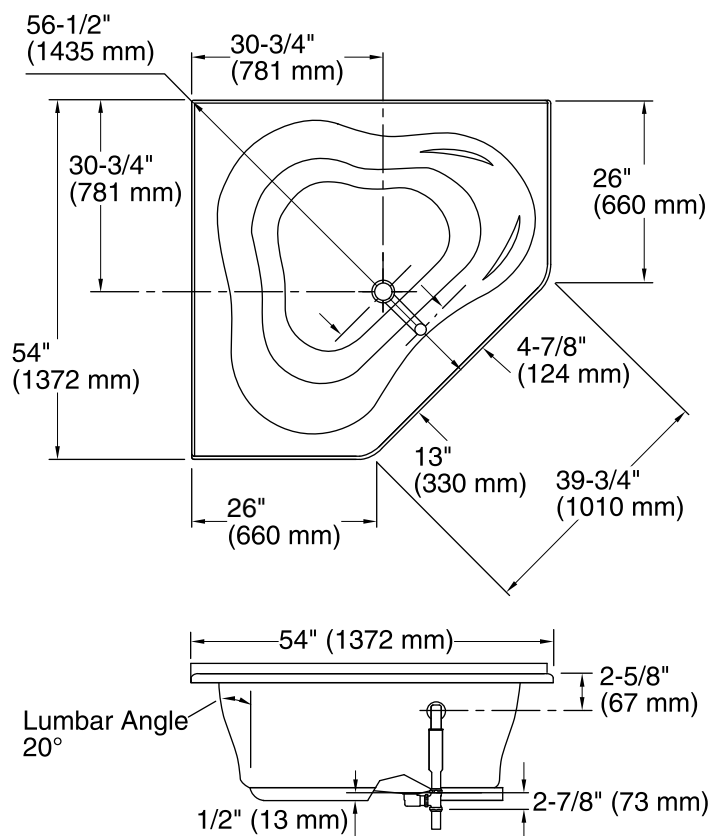
KOHLER® Plastic Baths and Receptors Lifetime Limited Warranty

See website for detailed warranty information.

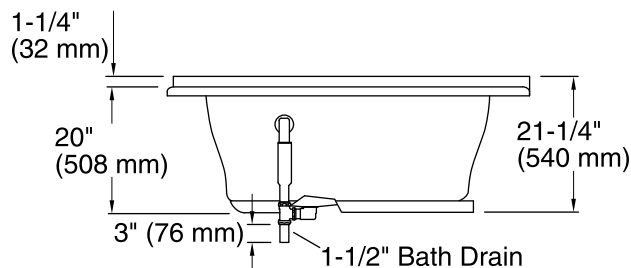
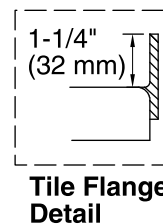
Available Color/Finishes

Color tiles intended for reference only.

| Color | Code | Description |
|--|------|-------------|
|  | 0 | White |
|  | 96 | Biscuit |
|  | 47 | Almond |



No change in measurements if connected with drain illustrated. (K-11677)



Technical Information

All product dimensions are nominal.

| | |
|---------------------|---|
| Installation: | Corner |
| Drain location: | Center |
| Basin area, bottom: | 44" x 36" (1118 mm x 914 mm) |
| Basin area, top: | 56" x 43" (1422 mm x 1092 mm) |
| Weight: | 51 lbs (23.1 kg) |
| Minimum floor load: | 35 lbs/ft ² (170.9 kg/m ²) |
| Water depth: | 15" (381 mm) |
| Water capacity: | 76 gal (287.7 L) |

Notes

Measure your actual product for rough-in details. Install this product according to the installation instructions.

The hot water supply should be 70% of the capacity of the bath or greater. Installations will vary.