

## Features

- Brass construction.
- Dual control wall-mounted.
- Includes valve.
- Oval handles.
- 1.2 gal/min (4.5 l/min) maximum flow rate [max at 60 psi (4.14 bar)].

## Optional Accessories

K-7107 Decorative Drain  
K-7108 Decorative Drain  
K-7114 Pop-Up Drain  
K-7124 Pop-Up Clicker Drain  
K-7127 Drain  
K-7129 Drain



## Codes/Standards

ASME A112.18.1/CSA B125.1

NSF 61

NSF 372

All applicable US Federal and State material regulations

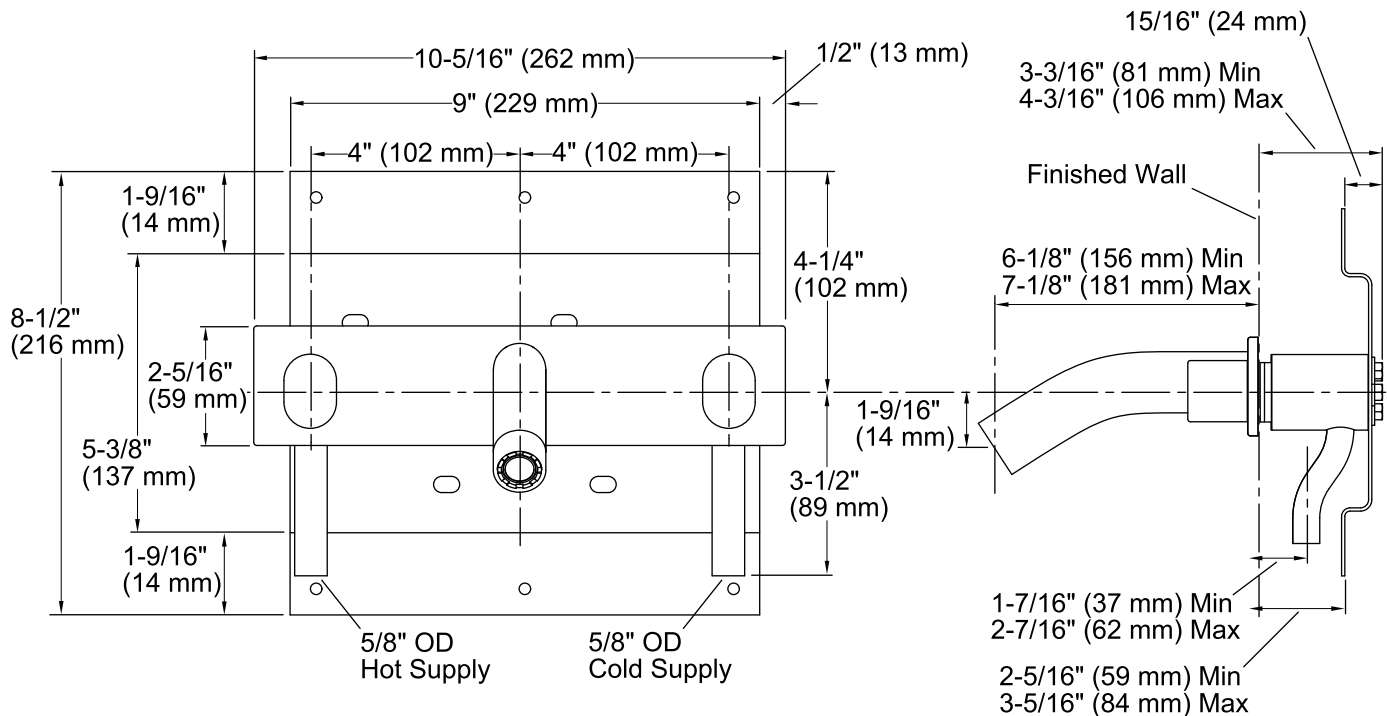
DOE - Energy Policy Act 1992

EPA WaterSense®

California Energy Commission (CEC)

## KOHLER® Faucet Lifetime Limited Warranty

See website for detailed warranty information.



## Technical Information

All product dimensions are nominal.

### Faucet:

Flow rate: 1.2 gal/min (4.5 l/min)  
Pressure: 60 psi (4.1 bar)

## Notes

Install this product according to the installation guide.

Three Ø1-1/8" (29 mm) diameter holes are required for the spout and handles.

1-1/2" (38 mm) minimum must be maintained between bottom of spout and top of fixture rim.