

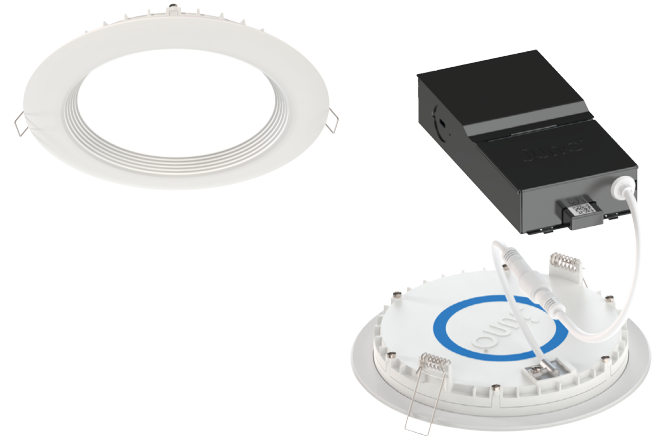


Catalog Number
Notes
Type

# Contractor Select™ WF4C REG/WF6C REG

## 4" and 6" LED Tunable White Regressed Smart Wafer Downlight

The Smart Regressed Wafer with Tunable White CCT's is the perfect way to get connected with a Smart Home Lighting solution. Once commissioned, it can be controlled through an app or voice commands. Connect the Smart Regressed Wafer directly to any Apple or Android phone using Bluetooth or Zigbee. Commission through the SmartThings app or Alexa and Google voice assistant apps. Once installed, controlling the lighting from your mobile device is simple and easy to customize lighting from on/off, fine-tuning the color temperatures (2700K to 5000K), dimming to set the mood, and grouping to control an entire lighting application at once.



### FEATURES:

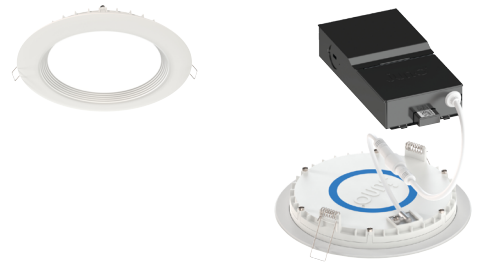
- Regressed lens and baffle trim design to reduce glare for comfortable and even illumination
- Canless - no can required; equals easy to install and less labor
- Installs into wood joists or suspended ceilings with new construction pan
- Residential and commercial applications including multi-family, hospitality, assisted living, dormitories and other multi-level construction
- Dimmable to 1%. *Not for use with Wall Dimmers*



Catalog Number	UPC	Description	Replaces Up To	Lumens	Input Watts	CCT	CRI	Voltage	Finish	Pallet qty.
WF4C REG TUWH MW M6	196182146886	4" Smart Regressed Wafer™ Downlight	65W Incandescent	650	9W	Tunable White (2700K to 5000K)	90	120V	White	576
WF6C REG TUWH MW M6	196182146947	6" Smart Regressed Wafer™ Downlight	75W Incandescent	950	13W	Tunable White (2700K to 5000K)	90	120V	White	540

LIGHTING PERFORMANCE DATA DONNÉES SUR LE RENDEMENT DE L'ÉCLAIRAGE	
Light Appearance (CCT) Aspect de la lumière (CCT)	
2700K soft white   blanc doux	
640 lumens   71 lumens per watt	
3000K warm white   blanc chaud	
650 lumens   72 lumens per watt	
3500K neutral white   blanc neutre	
660 lumens   73 lumens per watt	
4000K cool white   blanc froid	
670 lumens   74 lumens per watt	
5000K daylight   blanc neutre	
680 lumens   75 lumens per watt	
Watts	9
Color Accuracy (CRI) Précision des couleurs (CRI)	90

LIGHTING PERFORMANCE DATA DONNÉES SUR LE RENDEMENT DE L'ÉCLAIRAGE	
Light Appearance (CCT) Aspect de la lumière (CCT)	
2700K soft white   blanc doux	
944 lumens   72 lumens per watt	
3000K warm white   blanc chaud	
950 lumens   73 lumens per watt	
3500K neutral white   blanc neutre	
968 lumens   74 lumens per watt	
4000K cool white   blanc froid	
982 lumens   75 lumens per watt	
5000K daylight   blanc neutre	
992 lumens   76 lumens per watt	
Watts	13
Color Accuracy (CRI) Précision des couleurs (CRI)	90



## Specifications

### HOUSING:

Die cast aluminum mounting frame with integral polycarbonate flange • Non-conductive dead-front trim design suitable for a wide range of applications and codes requiring a non-conductive lens • Lens regressed to .5" with baffle trim design to reduce glare for comfortable and even illumination • FT4 3-pin plenum rated cable connector to connect from module to remote driver box • Steel spring clip for easy installation. 4" or 6" cut out template is provided to ensure a correct sized hole is cut into ceiling for proper installation of the trim. Size of hole should not exceed 4 1/4 inches (WF4C) or 6 1/4 inches (WF6C) for this product • Can be installed from 3/8" to 1 1/2" ceiling thickness • Can be removed from below the ceiling for service or replacement.

### LED LIGHT ENGINE:

LEDs are integrated to one piece high purity aluminum, thermally conductive housing to provide uninterrupted heat transfer to ensure long life of the LED

- Tunable color temperature from 2700K to 5000K
- 90 CRI minimum
- Dimmable to 1%. *Not for use with Wall Dimmers*

### DRIVER:

Dedicated 120 volt replaceable driver • Accommodates 120 volts AC at 50/60Hz • Isolated driver integrated inside steel remote box with four 7/8" knockouts with slots for pryout • Suitable for pulling wires with the 12 cubic-inch wiring compartment to accommodate up to (6) 14 gauge insulated conductor or (4) 12 gauge insulated conductors, making the Regressed Wafer much easier to wire in 2in/2out (plus ground) daisy-chain applications and contractor friendly • Designed to provide 50,000 hours of life • 3-year warranty on LED components.

### OPTICAL SYSTEM:

Computer-optimized reflector design with high reflectance white finish coupled with a high transmission diffusing lens conceals the LEDs • Efficient system that can produce over 650 lumens while using 9W (WF4C) or 950 lumens while using 13W (WF6C)

- Replaces 65W or 75W incandescent.

### LABELS:

CSA certified to US and Canadian safety standards • ENERGY STAR® certified product • Suitable for wet location • Air-Loc certified in accordance with ASTM E283-2004 • NOM Certified • Can be used to comply with California Title 24 Part 6 High Efficacy LED light Source Requirements.

### TESTING:

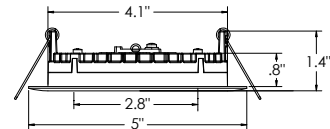
All reports are based on published industry procedures; field performance may differ from laboratory performance.

### WARRANTY:

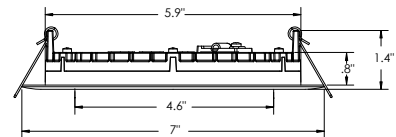
3-year limited warranty. This is the only warranty provided and no other statements in this specification sheet create any warranty of any kind. All other express and implied warranties are disclaimed. Complete warranty terms located at: [www.acuitybrands.com/support/warranty/terms-and-conditions](http://www.acuitybrands.com/support/warranty/terms-and-conditions)

**Note:** Actual performance may differ as a result of end-user environment and application. All values are design or typical values, measured under laboratory conditions at 25 °C. Specifications subject to change without notice.

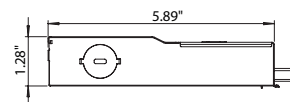
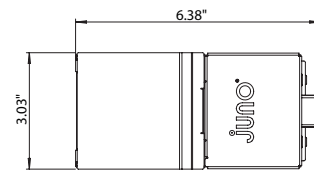
## Dimensions



**WF4C REG**

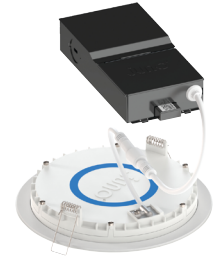


**WF6C REG**



## SPECIFICATIONS

	<b>WF4 REG</b>	<b>WF6 REG</b>
Aperture:	2.8"	4.6"
Ceiling Opening:	4.25"	6.25"
Overlap Trim:	5"	7"
Height:	1.4"	1.4"
Lens Regression:	.5"	.5"

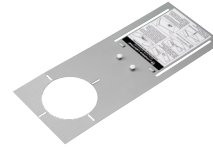


**Accessories: Order as separate catalog number.**

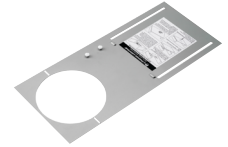
Series	
<b>WF8643 PAN U</b>	Universal New Construction Pan
<b>WF4 PAN R12</b>	4" new construction pan, retail pack of 12
<b>WF6 PAN R12</b>	6" new construction pan, retail pack of 12
<b>WF4GR MW JZ</b>	4" round oversized trim ring
<b>WF6GR MW JZ</b>	6" round oversized trim ring
<b>WEJB U</b>	Remodel Joist Bar
<b>WFEXC6 SW3PIN FT4</b>	3-Pin 6ft Cable
<b>WFEXC10 SW3PIN FT4</b>	3-Pin 10ft Cable
<b>WFEXC20 SW3PIN FT4</b>	3-Pin 20ft Cable



WF8643 UNIVERSAL  
New Construction Pan



WF4 PAN  
4" New Construction Pan



WF6 PAN  
6" New Construction Pan



Remodel Joist Bar



WFEXCx  
3-Pin Extension Cable

**PERFORMANCE DATA**

	<b>WF4C REG</b>	<b>WF6C REG</b>
Input Voltage	120V	120V
Input Power Typical	9W (+/-5%)	13W (+/-5%)
Frequency	60 Hz	60 Hz
EMI/RFI	FCC Title 47, Part 15 Class B (consumer)	FCC Title 47, Part 15 Class B (consumer)
Minimum Starting Temp	-40°F (-40°C)	-40°F (-40°C)

**Note:** Actual performance may differ as a result of end-user environment and application. All values are design or typical values, measured under laboratory conditions at 25°C.