

JUNO®

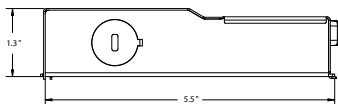
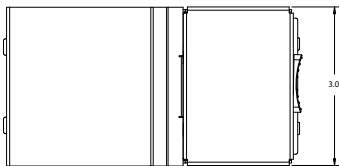
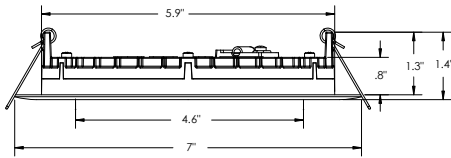
Juno Wafer™ LED Downlight Series

6" LED Regressed Wafer Switchable Downlight
950 Lumens

WF6 REG SWW5 Series



Dimensions



Project:
Fixture Type:
Location:
Contact/Phone:

Product Features

The 6" regressed round baffle with 5CCT Switchable White technology provides high-quality light output and efficiency featuring a switch for easy color temperature adjustment to choose between 2700K, 3000K, 3500K, 4000K, or 5000K - while eliminating the need for recessed housings.

- Regressed lens and baffle trim design to reduce glare for comfortable and even illumination
- Canless - no can required; equals easy to install and less labor
- 5 selectable color temperatures to choose with a switch ranging from warm (2700K) to daylight (5000K) allowing customization for endless applications

Applications

- Residential and light commercial including multi-family, hotels, assisted living, dormitories and other multi-level construction
- Shallow slim profile allows for easy retrofit, remodel or new construction insulated and drop ceiling installations
- Wet rated and airtight: perfect for showers, bathrooms, and outdoor soffits

Performance

Delivered Lumens	950L Nominal at 3000K
LED Color Temperature	Switchable White (27K, 30K, 35K, 40K, 50K) Default set at 3000K
CRI	90+
Voltage	Dedicated 120V
Dimming	Dimmable to 10% only with triac dimmers

*For a list of compatible dimmers see JUNO-WAFERS-DIM

Specifications

Aperture:	4.6"
Ceiling opening:	6.25"
Overlap trim:	7"
Height:	1.4"
Lens regression:	.5"

Juno® Juno Wafer™ LED Downlight Series

6" LED Regressed Wafer Switchable Downlight 950 Lumens



ORDERING INFORMATION

Downlight

Example: WF6 REG SWW5 90CRI MW M6

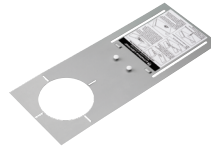
Series	Trim Style	Color Temperature	Rendering Index	Finish
WF6	6" Wafer-Thin LED Downlight	SWW5 Switchable White (2700K, 3000K, 3500K, 4000K, 5000K)	90CRI 90+ CRI	MW Matte White

Accessories: Order as separate catalog number.

Series	
WF8643 PAN U	Universal New Construction Pan
WF6 PAN R12	6" new construction pan, retail pack of 12
WF6GR MW JZ	6" Goof Ring
WFJB U	Remodel Joist Bar
WFEXC6 SW3PIN FT4	3-Pin 6ft Cable
WFEXC10 SW3PIN FT4	3-Pin 10ft Cable
WFEXC20 SW3PIN FT4	3-Pin 20ft Cable



WF8643 UNIVERSAL
New Construction Pan



WF6 PAN
6" New
Construction Pan



Remodel Joist Bar



WFEXCx
3-Pin Cable

PERFORMANCE DATA

	WF6 REG
Input Voltage	120V
Input Power Typical	13W (+/-5%)
Frequency	60 Hz
EMI/RFI	FCC Title 47, Part 15 Class B (consumer)
Minimum Starting Temp	-40°F (-40°C)

Note: Actual performance may differ as a result of end-user environment and application. All values are design or typical values, measured under laboratory conditions at 25°C.

LIGHTING PERFORMANCE DATA DONNÉES SUR LE RENDEMENT DE L'ÉCLAIRAGE

Light Appearance (CCT)
Aspect de la lumière (CCT)

2700K soft white blanc doux	944 lumens 72 lumens per watt
3000K warm white blanc chaud	950 lumens 73 lumens per watt
3500K neutral white blanc neutre	968 lumens 74 lumens per watt
4000K cool white blanc froid	982 lumens 75 lumens per watt
5000K daylight blanc neutre	992 lumens 76 lumens per watt
Watts	13
Color Accuracy (CRI) Précision des couleurs (CRI)	90

Juno® Juno Wafer™ LED Downlight Series

6" LED Regressed Wafer Switchable Downlight 950 Lumens



Specifications

Housing

Die cast aluminum mounting frame with integral polycarbonate flange provides passive thermal cooling achieving L70 at 50,000 hours • Lens regressed to .5" with baffle trim design to reduce glare for comfortable and even illumination • FT4 3-pin plenum rated cable connector to connect from module to remote driver box • Steel spring clip for easy installation. 6" cut out template is provided to ensure a correct sized hole is cut into ceiling for proper installation of the trim. Size of hole should not exceed 6 ¼ inches for this product. Can be installed from 3/8" to 1 ½" ceiling thickness • Can be removed from below the ceiling for service or replacement.

LED Light Engine

LEDs are integrated to one piece high purity aluminum, thermally conductive housing to provide uninterrupted heat transfer to ensure long life of the LED • Switchable white color temperature from 2700K, 3000K, 3500K, 4000K, 5000K • 90 CRI minimum • Color accuracy within 4 step McAdams Ellipse at the end CCT (2700K and 5000K), within 6 step McAdams Ellipse in the middle CCT (3000K, 3500K, and 4000K) • Dimming 100% to 10% with most standard incandescent dimers (see list of approved dimmers).

Driver

Connect directly to 120V Class-2 (CAN ICES-005 (B) / NMB-005 (B)) LED driver. 120V 60 Hz constant current driver provides noise free operation • IC rated driver with convenience of a switch to choose between 5 selectable color temperature options ranging from 2700K (warm white), 3000K, 3500K, 4000K, or 5000K (daylight) • The isolated driver integrated inside steel remote box with four 7/8" knockouts with slots for pryout. Suitable for pulling wires with the 12 cubic-inch wiring compartment to accommodate up to (6) 14 gauge insulated conductors; making the Wafer LED Downlights much easier to wire in 2in/2out (plus ground) daisy-chain applications and contractor friendly. • 2" plenum space required for installation of the remote driver box Edge-lit LED technology uses light guided plate to distribute light.

Optical System

• Polycarbonate lens provides even illumination throughout the space • Efficient system that can produce over 950 lumens while using 13W • Replaces 75W incandescent.

Life

Rated for 50,000 hours at 70% lumen maintenance.

Labels

CSA certified to US and Canadian safety standards • ENERGY STAR® certified product • Suitable for wet location • Air-Loc certified in accordance with ASTM E283-2004 • NOM Certified • Can be used to comply with California Title 24 Part 6 High Efficacy LED light Source Requirements • IP5X Rated, product is protected against dust. U.S. Patent No. 10,681,784.

Testing

All reports are based on published industry procedures; field performance may differ from laboratory performance.

Warranty 5-year limited warranty. Complete warranty terms located at: www.acuitybrands.com/CustomerResources/Terms_and_conditions.aspx

Specifications subject to change without notice.

Juno® Juno Wafer™ LED Downlight Series

6" LED Regressed Wafer Switchable Downlight

950 Lumens



PHOTOMETRICS

Distribution Curve

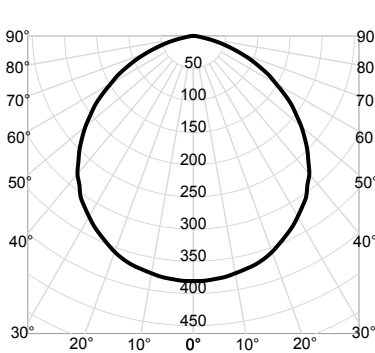
Distribution Data

Output Data

Coefficient of Utilization

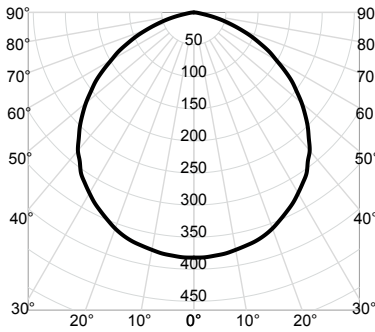
Illuminance Data at 30" Above Floor for a Single Luminaire

WF6 REG SWW5 90CRI_2700K Input Watts: 13.0, Delivered Lumens: 1012, LPW: 77.8, S/MH: 1.26, Test No: ISF 202635P6



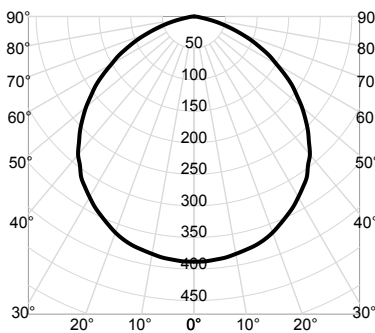
CP Summary		Zonal Lumen Summary				Coefficients of Utilization										Cone of Light			Luminance (cd/sq.m)	
0°	Zone	Lumens	% Fixture	pf	pc	80%		20%		50%		Mounting Height	Initial FC Center Beam	Beam Diameter	Average Luminance					
				pw	50%	30%	10%	50%	30%	10%	50%					30%	10%			
0°	0° - 30°	299	30%	0	119	119	119	116	116	111	111	6.0	10.6	16.7	0° 47,913					
5°	0° - 40°	488	48%	1	105	102	98	103	100	96	96	8.0	5.9	22.2	45° 44,520					
15°	0° - 60°	845	83%	2	93	86	81	91	85	80	87	10.0	3.8	27.8	55° 40,731					
25°	0° - 90°	1,012	100%	3	82	74	68	80	73	67	71	12.0	2.6	33.3	65° 33,731					
35°	90° - 180°	0	0%	4	73	64	58	71	63	57	69	14.0	1.9	38.9	75° 21,419					
45°	0° - 180°	1,012	100%	5	65	56	50	64	56	50	62				85° 6,815					
55°		186		6	59	50	44	58	49	43	56									
65°		113		7	53	45	39	52	44	38	51									
75°		44		8	49	40	34	48	40	34	47									
85°		5		9	45	37	31	44	36	31	43									
90°		0		10	41	33	28	41	33	28	40									

WF6 REG SWW5 90CRI_3000K Input Watts: 13.0, Delivered Lumens: 1015, LPW: 78.1, S/MH: 1.26, Test No: ISF 202635P7



CP Summary		Zonal Lumen Summary				Coefficients of Utilization										Cone of Light			Luminance (cd/sq.m)	
0°	Zone	Lumens	% Fixture	pf	pc	80%		20%		50%		Mounting Height	Initial FC Center Beam	Beam Diameter	Average Luminance					
				pw	50%	30%	10%	50%	30%	10%	50%					30%	10%			
0°	0° - 30°	300	30%	0	119	119	119	116	116	111	111	6.0	10.6	16.7	0° 48,055					
5°	0° - 40°	489	48%	1	105	102	98	103	100	96	96	8.0	6.0	22.2	45° 44,652					
15°	0° - 60°	847	83%	2	93	86	81	91	85	80	87	10.0	3.8	27.8	55° 40,852					
25°	0° - 90°	1,015	100%	3	82	74	68	80	73	67	71	12.0	2.7	33.3	65° 33,831					
35°	90° - 180°	0	0%	4	73	64	58	71	63	57	69	14.0	1.9	38.9	75° 21,483					
45°	0° - 180°	1,015	100%	5	65	56	50	64	56	50	62				85° 6,835					
55°		186		6	59	50	44	58	49	43	56									
65°		114		7	53	45	39	52	44	38	51									
75°		44		8	49	40	34	48	40	34	47									
85°		5		9	45	37	31	44	36	31	43									
90°		0		10	41	33	28	41	33	28	40									

WF6 REG SWW5 90CRI_3500K Input Watts: 13.0, Delivered Lumens: 1032, LPW: 79.4, S/MH: 1.26, Test No: ISF 202635P8



CP Summary		Zonal Lumen Summary				Coefficients of Utilization										Cone of Light			Luminance (cd/sq.m)	
0°	Zone	Lumens	% Fixture	pf	pc	80%		20%		50%		Mounting Height	Initial FC Center Beam	Beam Diameter	Average Luminance					
				pw	50%	30%	10%	50%	30%	10%	50%					30%	10%			
0°	0° - 30°	305	30%	0	119	119	119	116	116	111	111	6.0	10.8	16.7	0° 48,862					
5°	0° - 40°	497	48%	1	105	102	98	103	100	96	96	8.0	6.1	22.2	45° 45,401					
15°	0° - 60°	862	83%	2	93	86	81	91	85	80	87	10.0	3.9	27.8	55° 41,538					
25°	0° - 90°	1,032	100%	3	82	74	68	80	73	67	71	12.0	2.7	33.3	65° 34,398					
35°	90° - 180°	0	0%	4	73	64	58	71	63	57	69	14.0	2.0	38.9	75° 21,843					
45°	0° - 180°	1,032	100%	5	65	56	50	64	56	50	62				85° 6,950					
55°		189		6	59	50	44	58	49	43	56									
65°		116		7	53	45	39	52	44	38	51									
75°		45		8	49	40	34	48	40	34	47									
85°		5		9	45	37	31	44	36	31	43									
90°		0		10	41	33	28	41	33	28	40									

Juno® Juno Wafer™ LED Downlight Series

6" LED Regressed Wafer Switchable Downlight
950 Lumens



PHOTOMETRICS

Distribution Curve

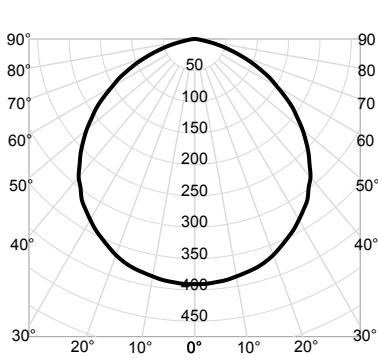
Distribution Data

Output Data

Coefficient of Utilization

Illuminance Data at 30" Above Floor for a Single Luminaire

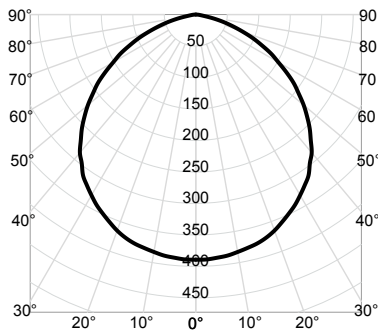
WF6 REG SWW5 90CRI_4000K Input Watts: 13.0, Delivered Lumens: 1039, LPW: 79.9, S/MH: 1.26, Test No: ISF 202635P9



CP Summary		Zonal Lumen Summary				Coefficients of Utilization										Cone of Light			Luminance (cd/sq.m)	
0°	Zone	Lumens	% Fixture	pf	pc	80%			70%			50%				Mounting Height	Initial FC Center Beam	Beam Diameter	Average Luminance	
				pw	50%	30%	10%	50%	30%	10%	50%	30%	10%							
0°	0° - 30°	307	30%	0	119	119	119	116	116	116	111	111	111	6.0	10.9	16.7	0°	49,194		
5°	0° - 40°	501	48%	1	105	102	98	103	100	96	99	96	93	8.0	6.1	22.2	45°	45,710		
15°	0° - 60°	867	83%	2	93	86	81	91	85	80	87	82	78	10.0	3.9	27.8	55°	41,820		
25°	0° - 90°	1,039	100%	3	82	74	68	80	73	67	77	71	66	12.0	2.7	33.3	65°	34,632		
35°	90° - 180°	0	0%	4	73	64	58	71	63	57	69	62	57	14.0	2.0	38.9	75°	21,992		
45°	0° - 180°	1,039	100%	5	65	56	50	64	56	50	62	55	49				85°	6,997		
55°		191		6	59	50	44	58	49	43	56	49	43							
65°		116		7	53	45	39	52	44	38	51	44	38							
75°		45		8	49	40	34	48	40	34	47	39	34							
85°		5		9	45	37	31	44	36	31	43	36	31							
90°		0		10	41	33	28	41	33	28	40	33	28							

Beam Angle: 108.5°
Field Angle: 151.9°

WF6 REG SWW5 90CRI_5000K Input Watts: 13.0, Delivered Lumens: 1035, LPW: 79.6, S/MH: 1.26, Test No: ISF 202635P10



CP Summary		Zonal Lumen Summary				Coefficients of Utilization										Cone of Light			Luminance (cd/sq.m)	
0°	Zone	Lumens	% Fixture	pf	pc	80%			70%			50%				Mounting Height	Initial FC Center Beam	Beam Diameter	Average Luminance	
				pw	50%	30%	10%	50%	30%	10%	50%	30%	10%							
0°	0° - 30°	305	30%	0	119	119	119	116	116	116	111	111	111	6.0	10.8	16.7	0°	49,004		
5°	0° - 40°	499	48%	1	105	102	98	103	100	96	99	96	93	8.0	6.1	22.2	45°	45,533		
15°	0° - 60°	864	83%	2	93	86	81	91	85	80	87	82	78	10.0	3.9	27.8	55°	41,659		
25°	0° - 90°	1,035	100%	3	82	74	68	80	73	67	77	71	66	12.0	2.7	33.3	65°	34,499		
35°	90° - 180°	0	0%	4	73	64	58	71	63	57	69	62	57	14.0	2.0	38.9	75°	21,907		
45°	0° - 180°	1,035	100%	5	65	56	50	64	56	50	62	55	49				85°	6,970		
55°		190		6	59	50	44	58	49	43	56	49	43							
65°		116		7	53	45	39	52	44	38	51	44	38							
75°		45		8	49	40	34	48	40	34	47	39	34							
85°		5		9	45	37	31	44	36	31	43	36	31							
90°		0		10	41	33	28	41	33	28	40	33	28							

Beam Angle: 108.5°
Field Angle: 151.9°