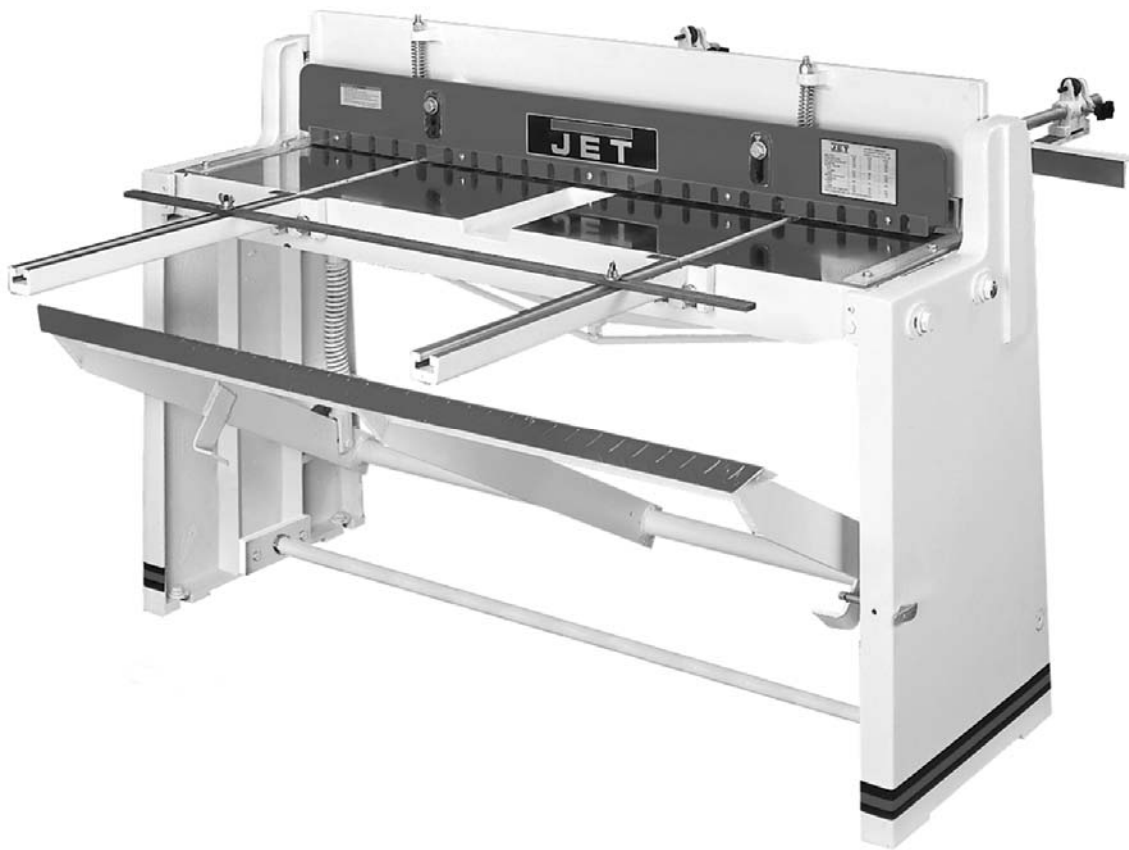




Operating Instructions and Parts Manual
Foot Shear
Models: FS-1636H, FS-1652H



WALTER MEIER (Manufacturing) Inc.
427 New Sanford Road
LaVergne, Tennessee 37086
Ph.: 800-274-6848
www.waltermeier.com

Part No. M-752636
Revision B1 01/2011
Copyright © 2011 Walter Meier (Manufacturing) Inc.

Warranty and Service

Walter Meier (Manufacturing) Inc., warrants every product it sells. If one of our tools needs service or repair, one of our Authorized Service Centers located throughout the United States can give you quick service. In most cases, any of these Walter Meier Authorized Service Centers can authorize warranty repair, assist you in obtaining parts, or perform routine maintenance and major repair on your JET® tools. For the name of an Authorized Service Center in your area call 1-800-274-6848.

MORE INFORMATION

Walter Meier is consistently adding new products to the line. For complete, up-to-date product information, check with your local Walter Meier distributor, or visit waltermeier.com.

WARRANTY

JET products carry a limited warranty which varies in duration based upon the product (MW = Metalworking, WW = Woodworking).

90 DAY WARRANTY	1 YEAR WARRANTY	Body Repair Kits Bottle Jacks Cable Pullers Cold Saws Hoists-Air Hoists-Electric Metal forming Mill/Drills Milling Machines MW Bandsaws MW Drill Presses MW Finishing Equipment MW Lathes MW Precision Vises	2 YEAR WARRANTY	Palet Trucks Rigging Equip. Service Jacks Stackers Surface Grinders Tapping Trolleys-Air Trolleys-Electric Web Slings Winches-Electric	3 YEAR WARRANTY	WW Benchtop Tools	5 YEAR WARRANTY	Beam Clamps Chain Hoist-Manual Lever Hoists Pullers-JCH Models Scissor Lift Tables Screw Jacks Trolleys-Geared Trolleys-Plain Winches-Manual WW Air Filtration WW Bandsaws WW Buffers	WW Drill Presses WW Dust Collectors WW Dust Filters WW Dust Fittings WW Jointers WW Lathes WW Planers WW Sanders WW Shapers WW Tablesaws	LIFE LIFETIME WARRANTY	Fastening Tools Mechanics Hand Tools Striking Tools Vises (no -precision) Clamps
Warranty reverts to 1 Year Warranty if woodworking (WW) products listed above are used for industrial or educational purposes.											

WHAT IS COVERED?

This warranty covers any defects in workmanship or materials subject to the exceptions stated below. Cutting tools, abrasives and other consumables are excluded from warranty coverage.

WHO IS COVERED?

This warranty covers only the initial purchaser of the product.

WHAT IS THE PERIOD OF COVERAGE?

The general JET warranty lasts for the time period specified in the product literature of each product.

WHAT IS NOT COVERED?

Five Year Warranties do not cover woodworking (WW) products used for commercial, industrial or educational purposes. Woodworking products with Five Year Warranties that are used for commercial, industrial or education purposes revert to a One Year Warranty. This warranty does not cover defects due directly or indirectly to misuse, abuse, negligence or accidents, normal wear-and-tear, improper repair or alterations, or lack of maintenance.

HOW TO GET SERVICE

The product or part must be returned for examination, postage prepaid, to a location designated by us. For the name of the location nearest you, please call 1-800-274-6848.

You must provide proof of initial purchase date and an explanation of the complaint must accompany the merchandise. If our inspection discloses a defect, we will repair or replace the product, or refund the purchase price, at our option. We will return the repaired product or replacement at our expense unless it is determined by us that there is no defect, or that the defect resulted from causes not within the scope of our warranty in which case we will, at your direction, dispose of or return the product. In the event you choose to have the product returned, you will be responsible for the shipping and handling costs of the return.

HOW STATE LAW APPLIES

This warranty gives you specific legal rights; you may also have other rights which vary from state to state.

LIMITATIONS ON THIS WARRANTY

WALTER MEIER (MANUFACTURING) INC., LIMITS ALL IMPLIED WARRANTIES TO THE PERIOD OF THE LIMITED WARRANTY FOR EACH PRODUCT. EXCEPT AS STATED HEREIN, ANY IMPLIED WARRANTIES OR MERCHANTABILITY AND FITNESS ARE EXCLUDED. SOME STATES DO NOT ALLOW LIMITATIONS ON HOW LONG THE IMPLIED WARRANTY LASTS, SO THE ABOVE LIMITATION MAY NOT APPLY TO YOU.

WALTER MEIER SHALL IN NO EVENT BE LIABLE FOR DEATH, INJURIES TO PERSONS OR PROPERTY, OR FOR INCIDENTAL, CONTINGENT, SPECIAL, OR CONSEQUENTIAL DAMAGES ARISING FROM THE USE OF OUR PRODUCTS. SOME STATES DO NOT ALLOW THE EXCLUSION OR LIMITATION OF INCIDENTAL OR CONSEQUENTIAL DAMAGES, SO THE ABOVE LIMITATION OR EXCLUSION MAY NOT APPLY TO YOU.

Walter Meier sells through distributors only. The specifications in Walter Meier catalogs are given as general information and are not binding. Members of Walter Meier reserve the right to effect at any time, without prior notice, those alterations to parts, fittings, and accessory equipment which they may deem necessary for any reason whatsoever. JET®-branded products are not sold in Canada by Walter Meier.

[* Walter Meier's Industrial Metalworking 2 year limited warranty is based on one 8-hour work shift or 2080 hours per year. The warranty period is good for 2 years or a total of 4160 hours whichever comes first.]

Table of Contents

Warranty and Service	2
Table of Contents	3
Warnings.....	4
Specifications.....	5
Uncrating and Clean-Up.....	5
Stop Assembly.....	5
Setup	5
Blade Care.....	5
Spring Tension.....	5
Gib Adjustment	5
Breakdown for FS-1636H & FS-1652H Foot Shear	6
Parts List for the FS-1636H & FS-1652H Foot Shear	7

The specifications in this manual are given as general information and are not binding. Walter Meier (Manufacturing) Inc., reserves the right to effect, at any time and without prior notice, changes or alterations to parts, fittings, and accessory equipment deemed necessary for any reason whatsoever.

Warnings

1. Keep guards in place and in working order.
2. Keep all body parts away from moving parts. Avoid placing any part of your body near belts, cutters, gears, etc.
3. Do not exceed rated capacity on this brake.
4. Keep the work area clean. Cluttered areas and workbenches invite accidents.
5. Keep children away. All visitors should be kept a safe distance from the work area.
6. Make your workshop child proof with padlocks, master switches or by removing starter keys.
7. Don't force the machine. It will do the job better and safer at the rate for which it was designed.
8. Use the right machine. Don't force a machine or attachment to do a job for which it was not designed.
9. Wear proper apparel. Do not wear loose clothing, gloves, neckties, rings, bracelets, or other jewelry which may get caught in moving parts. Non-slip footwear is recommended. Wear protective hair covering to contain long hair.
10. Always use safety glasses. Also use face or dust masks if the cutting operation is dusty. Everyday eyeglasses only have impact resistant lenses; they are not safety glasses.
11. Don't overreach. Keep proper footing and balance at all times.
12. Maintain tools with care. Keep tools sharp and clean for the best and safest performance. Follow instructions for lubricating and changing accessories.
13. Never stand on a machine. Serious injury could occur if the machine tipped.
14. Check damaged parts. Before further use of the machine, a guard or other part that is damaged should be carefully checked to determine that it will operate properly and perform its intended function - check for alignment of moving parts, binding of moving parts, breakage of parts, mounting, and any other conditions that may affect its operation. A guard or other part that is damaged should be properly repaired or replaced.
15. Sheet metal stock has sharp edges. To prevent cuts, use caution when handling.
16. Keep hands and fingers clear of the area in front and rear of the brake.
17. Do not use the machine for any purpose other than for which it was designed
18. Failure to comply with all of these warnings may cause serious injury.
19. Some dust created by power sanding, sawing, grinding, drilling and other construction activities contains chemicals known to cause cancer, birth defects or other reproductive harm. Some examples of these chemicals are:
 - Lead from lead based paint
 - crystalline silica from bricks and cement and other masonry products, and
 - arsenic and chromium from chemically treated lumber.
20. Your risk from those exposures varies, depending on how often you do this type of work. To reduce your exposure to these chemicals: work in a well ventilated area, and work with approved safety equipment, such as those dust masks that are specifically designed to filter out microscopic particles
21. Do not operate tool while under the influence of drugs, alcohol or any medication.

Specifications

Model Number.....	FS-1636H.....	FS-1652H
Stock Number.....	752636.....	752652
Capacity (mild steel)	16 gauge.....	16 gauge
Shearing Length Capacity.....	36".....	52"
Back Gauge Capacity.....	25.5".....	25.5"
Front Gauge Capacity.....	28".....	28"
Overall Dimensions (LxWxH).....	46 ½" x 21 ¼" x 41 ½".....	62 ½" x 21 ¼" x 41 ½"

Uncrating and Clean-Up

1. Remove the crate from around the machine.
2. Carefully clean all rust protected surfaces with a mild solvent or kerosene and a soft rag. Do not use lacquer thinner, paint thinner, or gasoline. These will damage painted surfaces.
3. Coat all machined surfaces with a light coat of oil to inhibit rust.
4. Remove the bolts holding the machine to the skid.
5. Carefully move the machine to a level foundation. Machine location must allow access to all sides.

Assembly Note: Prior to shipment the foot shear is adjusted at the factory for proper operation. If the machine does not operate properly, or the stand does not sit squarely on the floor proceed to setup.

Stop Assembly

The (#) in the text refers to the breakdown.

1. Attach the two front arm extensions #6 to the bed with four hex socket cap screws and washers.
2. Attach the stop to the front extension arms with T-nuts #72.
3. Attach the rear stop #59 to the adjusting block assembly #61.
4. Insert the rod # 58 through the adjusting block assembly and into the cutter bar. Tighten in place with setscrews.

Setup

1. Loosen four bolts #21. Loosen adjusting screws #18 & 19. The bed must rest squarely on the right and left hand side panels at all four corners while screws are loose. Shim legs at floor if necessary. Tighten hardware.

2. Use set screw #18 and hex cap screw #19, to adjust the lower blade towards or away from the upper blade. The distance between the upper and lower blades should be 0.002-0.005".

Do not let the blades overlap.

3. Place a heavy sheet of paper (~0.005") in the cutting position, along the entire length of the bed, and slowly press the foot lever.
4. If the shear does not cut the paper move the lower blade towards the upper blade.
5. If the shear cuts the paper on the ends, but not the center, turn the tie-rod adjusting screw #37, clockwise until the paper is cut the entire length.
6. If the shear cuts the paper in the center, but not the ends, turn the tie-rod adjusting screw #37, counter-clockwise until the paper is cut the entire length.
7. Make sure the scales #15 and #16 on top of the bed are square to the blade, and also show the correct distance from the blade.
8. Make test cuts to verify the scale is correct.

Blade Care

The 2-way upper blade can be removed and flipped 180°, for a sharp edge before having to sharpen the blade.

Wipe the blade lightly with oil. Lubricate all pivot points on the machine daily.

Spring Tension

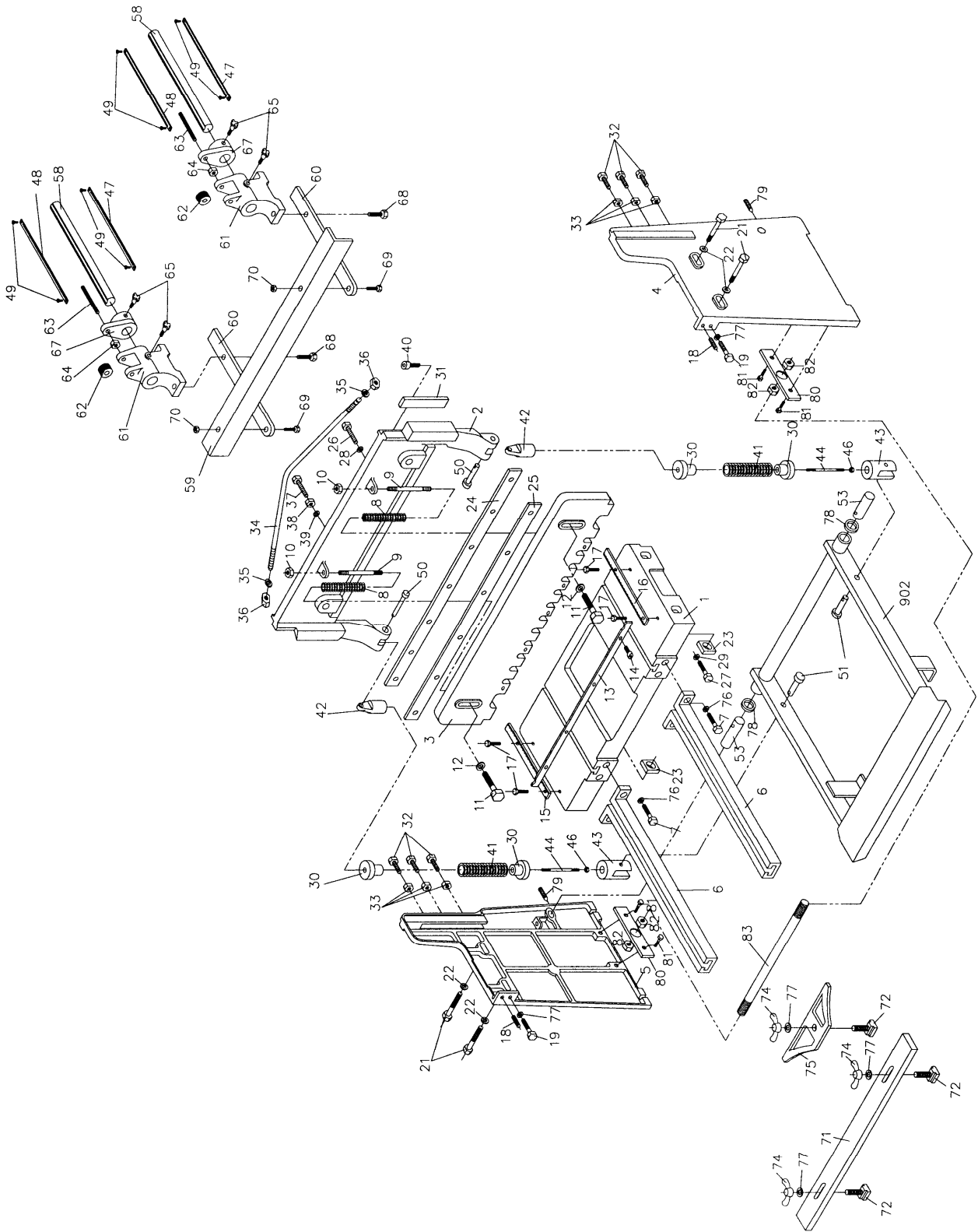
The spring return can be adjusted on the foot lever by tightening #46 hex nuts.

The spring return can be adjusted on the hold down #3 by tightening #10 hex nuts.

Gib Adjustment

There are three hex cap screws #32 that can be adjusted for play in the shim #31. Adjust for smooth travel.

Breakdown for FS-1636H & FS-1652H Foot Shear



Parts List for the FS-1636H & FS-1652H Foot Shear

Index No.	Part No.	Description	Size	Qty
1	FS1636N-1	Table		1
	FS1652N-1	Table		1
2	FS1636N-2	Cutter Bar		1
	FS1652N-2	Cutter Bar		1
3	FS1636N-3	Hold Down		1
	FS1652N-3	Hold Down		1
4	FS1636N-4	R.H. Side Panel		1
5	FS1636N-5	L.H. Side Panel		1
6	FS1636N-6	Front Arm Extension		2
7	FS1636N-7	Screw	M12x45	4
8	FS1636N-8	Spring		2
9	FS1636N-9	Stud		2
10	FS1636N-10	Nut	M12	2
11	FS1636N-11	Screw	M12x80	2
12	FS1636N-12	Washer		2
13	FS1636N-13	Finger Guard		1
	FS1652N-13	Finger Guard		1
14	FS1636N-14	Screw	M6x12	4
15	FS1636N-15	Table Scale (L.H.)		1
16	FS1636N-16	Table Scale (R.H.)		1
17	FS1636N-17	Screw	M8x20	4
18	FS1636N-18	Set Screw	M10x45	2
19	FS1636N-19	Screw	M10x50	2
21	FS1636N-21	Bolt	M16x115	4
22	FS1636N-22	Washer	M16	4
23	FS1636N-23	Nut	M16	4
24	FS1636N-24	Upper Knife		1
	FS1652N-24	Upper Knife		1
25	FS1636N-25	Lower Knife		1
	FS1652N-25	Lower Knife		1
26	FS1636N-26	Screw	M10x40	7
27	FS1636N-27	Screw	M10x45	6
28	FS1636N-28	Washer		7
29	FS1636N-29	Washer		6
30	FS1636N-30	Spring Cap		4
31	FS1636N-31	Gib		2
32	FS1636N-32	Screw	M10x55	6
33	FS1636N-33	Nut	M10	6
34	FS1636N-34	Rod		1
	FS1652N-34	Rod		1
35	FS1636N-35	Washer	M16	2
36	FS1636N-36	Nut	M16	2
37	FS1636N-37	Screw	M16x80	1
38	FS1636N-38	Nut	M16	1
39	FS1636N-39	Washer	M16	1
40	FS1636N-40	Hex Socket Cap Screw	M10x30	2
41	FS1636N-41	Spring		2
42	FS1636N-42	Swivel Top		2
43	FS1636N-43	Swivel Bottom		2
44	FS1636N-44	Stud		2
46	FS1636N-46	Nut	M16	2
47	FS1636N-47	Scale (metric)		2
48	FS1636N-48	Scale (inches)		2
49	FS1636N-49	Screw	M4x8	4
50	FS1636N-50	Pin	Ø12x70	2
51	FS1636N-51	Pin	Ø12x45	2

53.....	FS1636N-53	Brake Pin	2	
58.....	FS1636N-58	Rod	2	
59.....	FS1636N-59	Stop	1	
.....	FS1652N-59	Stop	1	
60.....	FS1636N-60	Extension Bar.....	2	
61.....	FS1636N-61	Adjusting Block.....	2	
62.....	FS1636N-62	Adjusting Dial	2	
63.....	FS1636N-63	Adjusting Screw.....	2	
64.....	FS1636N-64	Nut	M10..... 2	
65.....	FS1636N-65	Knob	4	
67.....	FS1636N-67	Adjusting Bracket.....	2	
68.....	FS1636N-68	Screw	M10x25	4
69.....	FS1636N-69	Bolt.....	M10x25	2
70.....	FS1636N-70	Nut	M10.....	2
71.....	FS1636N-71	Stop	1	
.....	FS1652N-71	Stop	1	
72.....	FS1636N-72	"T" Nut.....	3	
74.....	FS1636N-74	Wing Nut	M10.....	3
75.....	FS1636N-75	Bevel Gauge	1	
76.....	FS1636N-76	Washer.....	4	
77.....	FS1636N-77	Washer.....	M10.....	5
78.....	FS1636N-78	Washer.....	2	
79.....	FS1636N-79	Set Screw.....	M10x50	2
80.....	FS1636N-80	Plate.....	2	
81.....	FS1636N-81	Screw	M12x35	4
82.....	FS1636N-82	Nut	M16.....	4
83.....	FS1636N-83	Connection Bar.....	Ø16x1081mm.....	1
.....	FS1652N-83	Connection Bar.....	Ø16x1463mm.....	1
902.....	FS1636N-902	Pedal Assembly.....	1	
.....	FS1652N-902	Pedal Assembly.....	1	
.....	FS1636N-ID.....	ID Label (not shown).....	1	
.....	FS1652N-ID.....	ID Label (not shown).....	1	
.....	FS1636N-W.....	Warning Label (not shown)	1	
.....	FS1636N-J	JET Label (not shown).....	1	

Ordering Replacement Parts

To order parts or reach our service department, call 1-800-274-6848 between 7:00 a.m. and 6:00 p.m. (CST), Monday through Friday. Having the Model Number and Serial Number of your machine available when you call will allow us to serve you quickly and accurately.



WALTER MEIER (Manufacturing) Inc.

427 New Sanford Road
 LaVergne, Tennessee 37086
 Phone: 800-274-6848
www.waltermeier.com