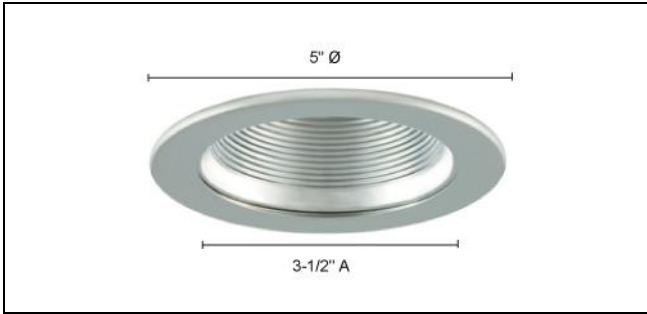




**TM401**

**RECESSED LIGHTING**  
4" APERTURE LOW VOLTAGE TRIMS

Type	
Project	
Catalog No.	



**CATALOG INFORMATION**

MODEL	BAFFLE / TRIM FINISH
TM401	ABAB – Antique Bronze / Antique Bronze
	BKKB – Black / Black
	BKPB – Black / Polished Brass
	BKST – Black / Satin Chrome
	BKWH – Black / White
	CHCH – Chrome / Chrome
	STST – Satin Chrome / Satin Chrome
	WHST – White / Satin Chrome
	WHWH – White / White

**Ordering Instructions**  
Example:

<b>MODEL</b>	–	<b>FINISH</b>
TM401	–	CHCH

**DESCRIPTION**

- Recessed Lighting –Adjustable Step Baffle 4" aperture low voltage trim.
- Use MR16 12V 50W Max.
- Ideal for use in ceilings, cabinets and displays.
- 15° adjustment from vertical
- Dimensions: 3-1/2"A x 5"Ø
- Listings: UL and C-UL listed.

**COMPATIBLE LOW VOLTAGE HOUSINGS**



**LV4000B**  
Non-IC Universal Housing for New Construction  
MR16 120V 50W  
**Dimensions:** 5-1/4"W x 10-1/2"L x 5-1/2"D  
**Hanger Bars:** adj. 14-1/2"~ 24-1/2"  
**Cutout:** 4-3/8"Ø



**LV4000IC**  
IC Housing for New Construction  
MR16 120V 50W  
**Dimensions:** 7-3/4"W x 12-1/4"L x 7"D  
**Hanger Bars:** adj. 14-1/2"~ 24-1/2"  
**Cutout:** 4-3/8"Ø

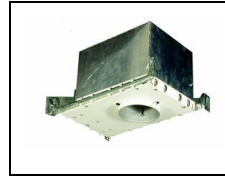


**LV4000R**  
Non-IC Housing for Remodel  
MR16 120V 50W  
**Dimensions:** 4-5/8"W x 14-1/2"L x 5-3/4"D  
**Cutout:** 4-3/8"Ø

**COMPATIBLE LOW VOLTAGE HOUSINGS**



**LV4000BA**  
Non-IC Airtight Universal Housing for New Construction  
MR16 120V 50W  
**Dimensions:** 5-1/4"W x 10-1/2"L x 5-1/2"D  
**Hanger Bars:** adj. 14-1/2"~ 24-1/2"  
**Cutout:** 4-3/8"Ø



**LV4000ICA**  
IC Airtight Housing for New Construction  
MR16 120V 50W  
**Dimensions:** 7-3/4"W x 12-1/4"L x 7"D  
**Hanger Bars:** adj. 14-1/2"~ 24-1/2"  
**Cutout:** 4-3/8"Ø



**LV4000RA**  
Non-IC Airtight Housing for Remodeling  
MR16 120V 50W  
**Dimensions:** 4-5/8"W x 14-1/2"L x 5-3/4"D  
**Cutout:** 4-3/8"Ø