



Features:

- Cast brass spout and side valves
- 9 1/4" spout
- Ceramic disc valve cartridge
- 1/2" valves
- Available in 4 handle options
- Lead Free - Faucet contains $\leq 0.25\%$ total lead content by weighted volume
- Maximum Flow Rate: 1.5 GPM (5.7L/min)

Pictured: 853/148 Wall Mount Faucet with Straight Levers

	Handle Type	Product Number
Wall Mount Faucet	Cross	853/138
Wall Mount Faucet	Straight Lever	853/148
Wall Mount Faucet	Curved Lever	853/158
Wall Mount Faucet	Crystal Lever	853/178



Rough & Trim Options	Handle Type	Product Number
Trim Only	Cross	853/438
Trim Only	Straight Lever	853/448
Trim Only	Curved Lever	853/458
Trim Only	Crystal Lever	853/478
Rough Only		899/997/191

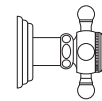


Extension Kits	Product Number
Wall Mount Lavatory Extension Kit	H960831.191

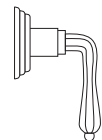
Available Finishes:	Finish Code
Polished Chrome	100
Old Bronze	105
Brushed Nickel	144
Platinum Nickel	150
Diamond (PVD)	167
Antique Nickel	444

ROUGH-IN DIAGRAM SHOWN ON REVERSE SIDE

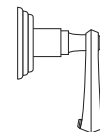
Handle Options:



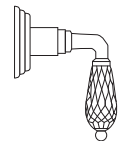
Cross Handle



Straight Lever



Curved Lever



Crystal Lever

CODES & STANDARDS

These products meet and exceed the following codes and standards:

ASME A112.18.1

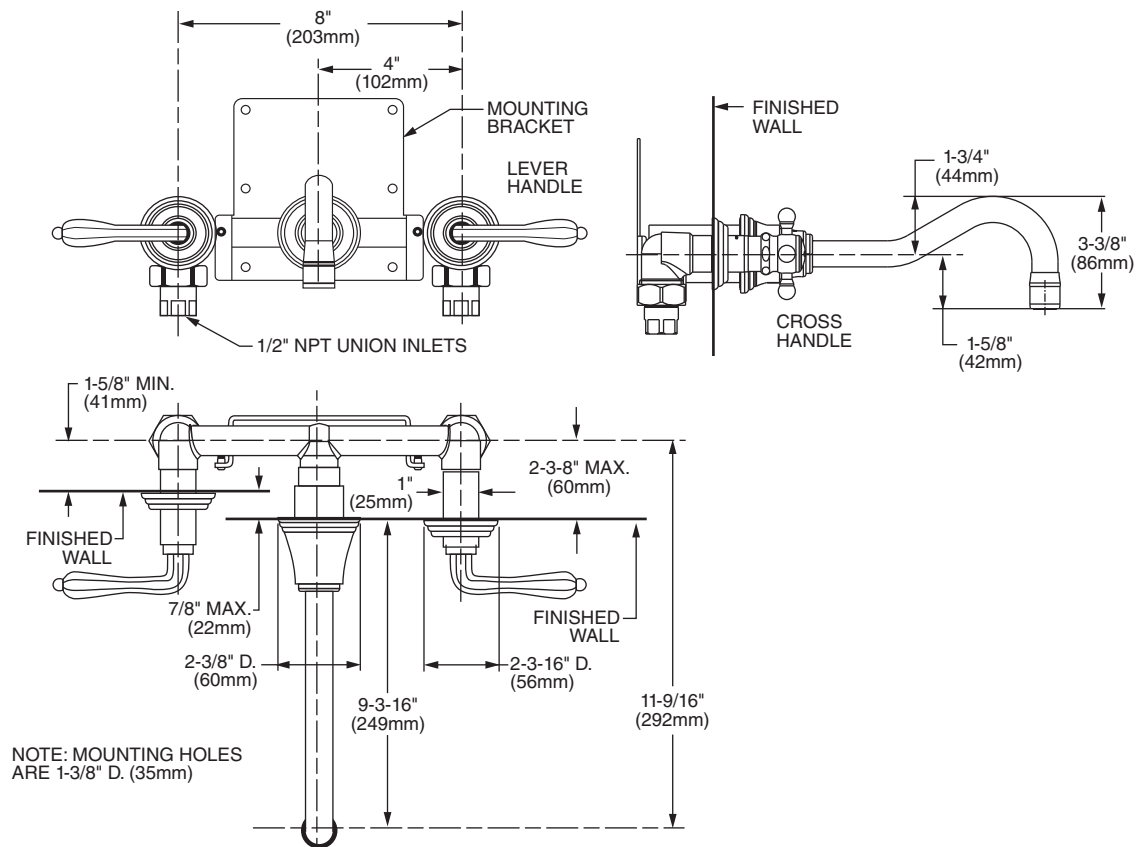
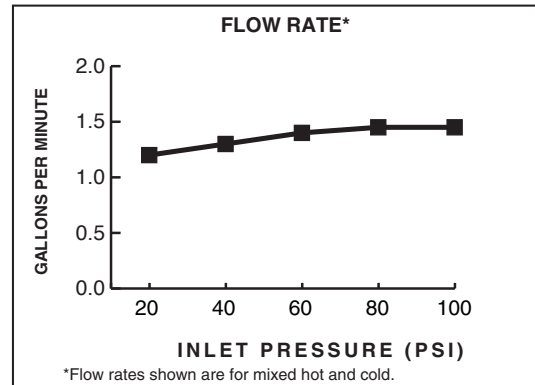
CSA B125

NSF 61/Section 9 & Annex G

EPA WaterSense® High Efficiency Lavatory Faucet Specification



Meets the American Disabilities Act Guidelines and **ANSI A117.1** Requirements for the physically challenged.



IMPORTANT: These measurements are subject to change or cancellation. No responsibility is assumed for use of superseded or voided pages.