







Features:

- Cast brass valve
- Ceramic disc valve cartridge
- Adjustable hot limit safety stop
- Pressure Balance cartridge maintains constant output temperature in response to changes in relative hot and cold supply pressures
- Concealed mounting hardware
- Adjustable showerhead
- Maximum Showerhead Flow Rate: 2.5 GPM (9.5L/min)

Pictured:
847/451 Shower Set with Cy Handle

Description	Handle Type	Product Number	Available Finishes	Finish Code
Shower Set	Cross	847/450	Polished Chrome	100
Shower Set	Cy	847/451 	Brushed Nickel	144
PB Shower Valve Set	Cross	847/130	Platinum Nickel	150
PB Shower Valve Set	Cy	847/131 		

Rough & Trim Options	Handle Type	Product Number
Shower Set Trim Only*	Cross	847/485
Shower Set Trim Only*	Cy	847/486 
PB Shower Valve Set Trim Only **	Cross	847/535
PB Shower Valve Set Trim Only **	Cy	847/536 
Showerhead Only		814/O82
Rough Only		899/260/191

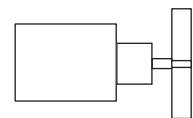
* Includes Pressure Balance Shower Valve Trim, Showerhead & Shower Arm.

**Pressure Balance Shower Valve Trim Only

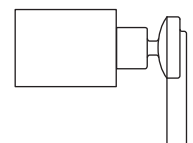
Extension Kit	Product Number
PB Handle Extension Kit	A3195.191

ROUGH-IN DIAGRAM
SHOWN ON REVERSE SIDE

Handle Options:



Cross Handle



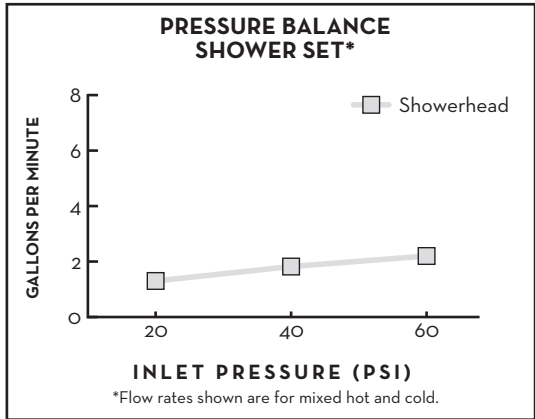
Cy Handle




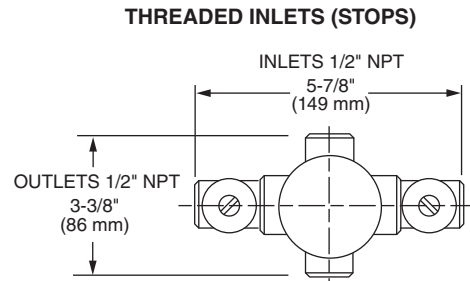
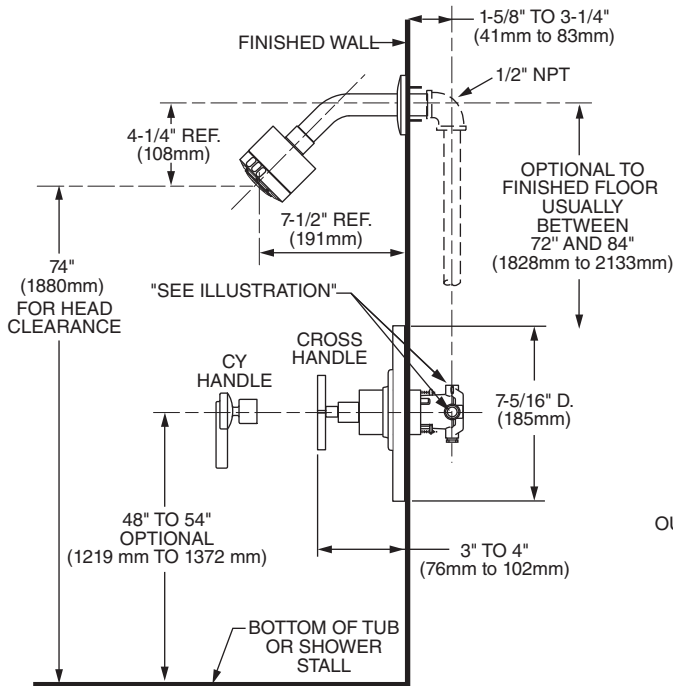
CODES & STANDARDS

These products meet and exceed the following codes and standards:

- ASME A112.18.1
- CSA B125.1
- ASSE 1016



 Meets the American Disabilities Act Guidelines and **ANSI A117.1** Requirements for the physically challenged.



IMPORTANT: These measurements are subject to change or cancellation. No responsibility is assumed for use of superseded or voided pages.