



Features:

- Cast brass valves
- Ceramic disc valve cartridge
- Adjustable hot limit safety stop
- Pressure Balance cartridge maintains constant output temperature in response to changes in relative hot and cold supply pressures
- 8" Traditional rain shower head
- Available with Cross or Lever Handle
- Maximum Showerhead Flow Rate: 2.5 GPM (9.5L/min)

Pictured: 845/451 Shower Set with Lever Handle

Kit Options	Handle Type	Product Number
Shower Set	Cross	845/450
Shower Set	Lever	845/451
PB Shower Valve Set	Cross	845/130
PB Shower Valve Set	Lever	845/131



Rough & Trim Options	Handle Type	Product Number
Shower Set Trim Only*	Cross	845/485
Shower Set Trim Only*	Lever	845/486
PB Shower Valve Set Trim Only**	Cross	845/535
PB Shower Valve Set Trim Only**	Lever	845/536
Showerhead Only		860/108
Rough Only		899/260/191



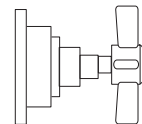
* Includes Pressure Balance Shower Valve Trim & Showerhead

**Pressure Balance Shower Valve Trim Only

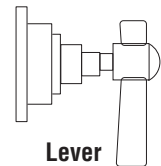
Extension Kits	Product Number
PB Handle Extension Kit	A3195.191

Available Finishes:	Finish Code
Polished Chrome	100
Old Bronze	105
Brushed Nickel	144
Platinum Nickel	150
Antique Nickel	444

Handle Options:



Cross



Lever

ROUGH-IN DIAGRAM SHOWN ON REVERSE SIDE

CODES & STANDARDS

These products meet and exceed the following codes and standards:

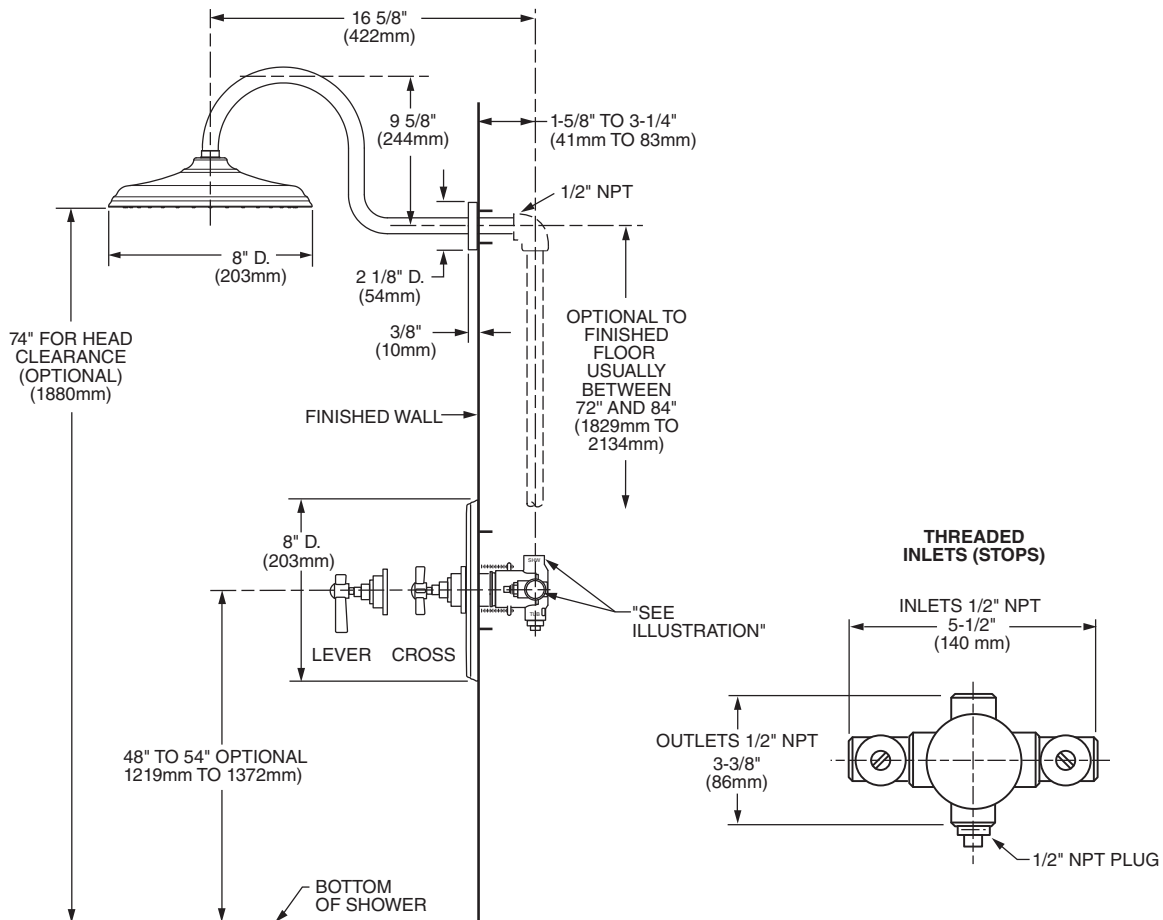
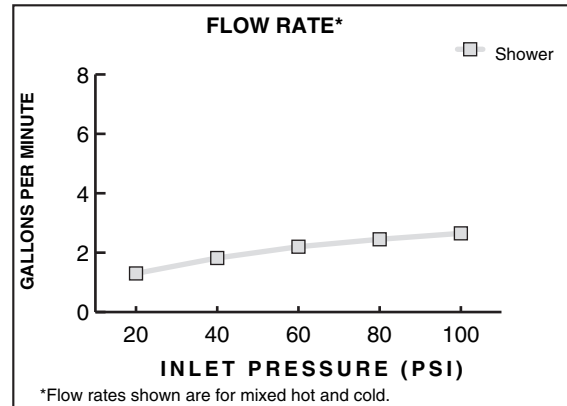
ASME A112.18.1

CSA B125

ASSE1016



Meets the American Disabilities Act Guidelines and **ANSI A117.1** Requirements for the physically challenged.



IMPORTANT: These measurements are subject to change or cancellation. No responsibility is assumed for use of superseded or voided pages.