

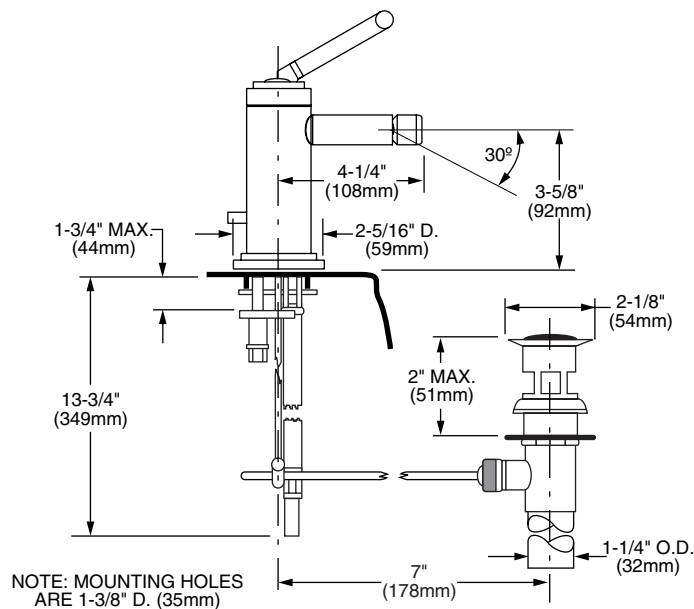


### Features:

- Ceramic disc valve cartridge
- Cast brass construction
- Integral vacuum breaker with transfer valve
- Diverter controls water flow between douche spray and flushing rim
- 3/8" Compression Flexible Hose Connections
- Includes 1-1/4" drain assembly

	Handle Type	Product Number	
3-Hole Bidet Set	Lever	826/002	

Available Finishes:	Finish Code
Polished Chrome	100
Brushed Nickel	144
Platinum Nickel	150
UltraSteel (PVD)	355



**IMPORTANT:** These measurements are subject to change or cancellation. No responsibility is assumed for use of superseded or voided pages.

### **CODES & STANDARDS**

These products meet and exceed the following codes and standards:

**ASME A112.18.1**

**CSA B125**



Meets the American Disabilities Act Guidelines and **ANSI A117.1** Requirements for the physically challenged.