



### Features:

- Cast brass spout and valves
- Ceramic disc valve cartridge
- Adjustable hot limit safety stop
- Pressure Balance cartridge maintains constant output temperature in response to changes in relative hot and cold supply pressures
- Integral diverter
- Multi-functional showerhead
- Available with Cross or Lever Handle

Pictured: 826/400 Tub & Shower Set with Cross Handle

Showerhead Maximum Flow Rate: 2.5 GPM (9.5L/min)

Kit Options	Handle Type	Product Number
Tub & Shower Set	Cross	826/400
Tub & Shower Set	Lever	826/401
PB Diverter Valve Set	Cross	826/140
PB Diverter Valve Set	Lever	826/141



Rough & Trim Options	Handle Type	Product Number
Tub & Shower Set Trim Only*	Cross	826/495
Tub & Shower Set Trim Only*	Lever	826/496
PB Diverter Valve Set Trim Only**	Cross	826/545
PB Diverter Valve Set Trim Only**	Lever	826/546
Shower Head Only		826/082
Tub Spout Only		826/017
Rough Only		899/261/191



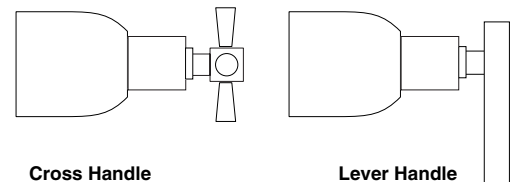
Available Finishes:	Finish Code
Polished Chrome	100
Brushed Nickel	144
Platinum Nickel	150
UltraSteel (PVD)	355

\* Includes Pressure Balance Diverter Valve Trim, Shower Head & Tub Spout

\*\*Pressure Balance Diverter Valve Trim Only

ROUGH-IN DIAGRAM SHOWN ON REVERSE SIDE

### Handle Options:



Cross Handle

Lever Handle


### CODES & STANDARDS

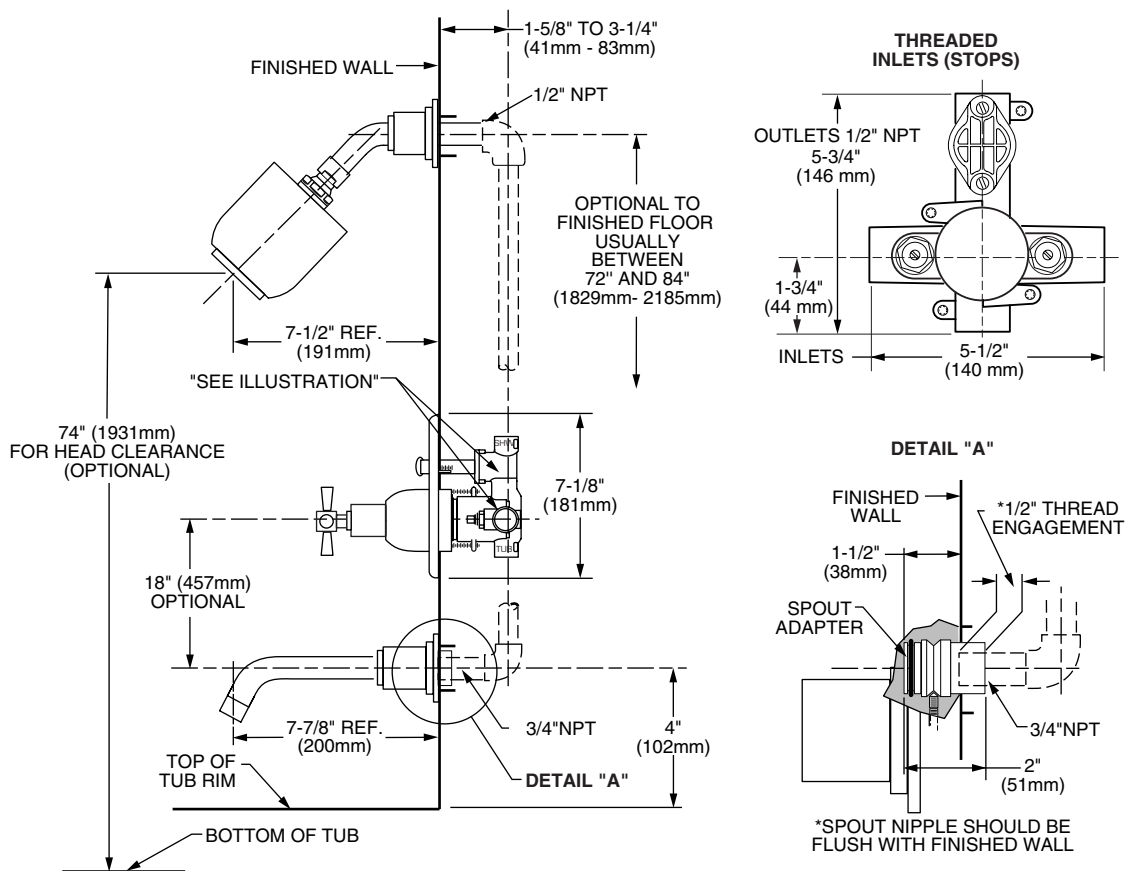
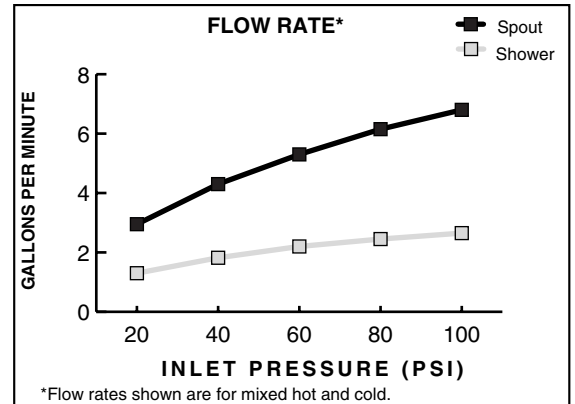
These products meet and exceed the following codes and standards:

**ASME A112.18.1**

**CSA B125**

**ASSE1016**

 Meets the American Disabilities Act Guidelines and **ANSI A117.1** Requirements for the physically challenged.



**IMPORTANT:** These measurements are subject to change or cancellation. No responsibility is assumed for use of superseded or voided pages.