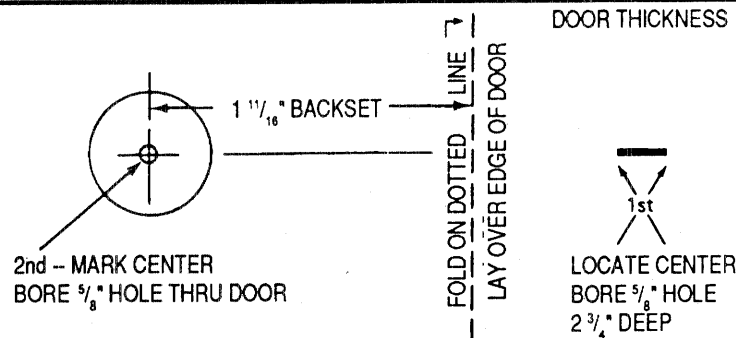
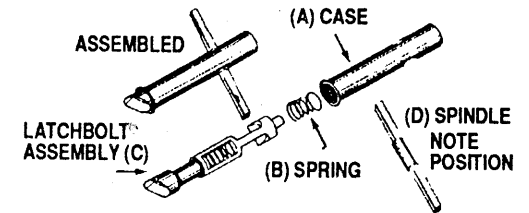
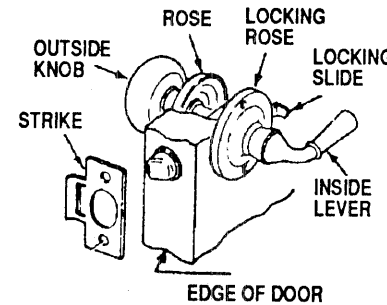


TEMPLATE



980 STORM DOOR LATCH - For Doors 7/8" to 1 3/8" Thick



TEAR OFF TEMPLATE HERE
INSTALLATION INSTRUCTIONS

CAUTION. INSTALL ABOVE HEIGHT OF ENTRANCE SET ON APPLICATIONS WITH NARROW JAMBS.

FOLD TEMPLATE AND PLACE ON DOOR AT HEIGHT DESIRED.

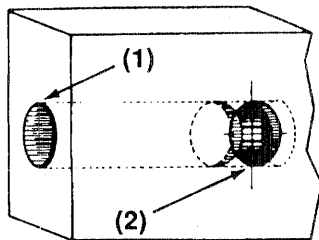
MARK EDGE AND FACE OF DOOR AT POINTS 1 AND 2.

USING 5/8" DRILL BIT, BORE HOLE #1 IN EXACT CENTER OF EDGE OF DOOR A FULL 2 3/4" DEEP.

USING SAME BIT (5/8"), BORE HOLE #2 THROUGH DOOR.

TO INSTALL STRIKE: MARK FRAME OPPOSITE CENTER POINT OF LATCHBOLT WITH 5/8" BIT. DRILL HOLE 5/16" DEEP.

SEE OPPOSITE SIDE FOR INSTRUCTIONS FOR MOUNTING LATCH.




INSTRUCTIONS FOR INSTALLING LATCHBOLT ASSEMBLY

- 1) Insert case (A) in hole bored in edge of door. Place spring (B) inside case.
- 2) Insert latch bolt assembly (C) in case and depress with finger enough to allow spindle (D) to pass through cross hole of case. Insert spindle through hole #2 (see reverse) and pass through case. Note position of spindle. 3) Place roses on spindle. Screw knob and lever onto spindle until they stop on roses. Position roses so that screw holes are lined up vertically and the locking slide is away from edge of door. Mark rose screw hole locations on both sides of door. 4) Remove knob, lever and roses. Drill pilot holes for screws with 1/16" drill bit. 5) Secure roses to door. Screw knob and lever onto spindle until they stop on roses. Tighten set screws located on shank of knob and lever. 6) Install strike on frame exactly opposite center point of latch bolt. Secure with 2 flat head screws provided.

©1993 H.B. IVES, Wallingford, CT 06492

TEMPLATE DIMENSIONS MUST BE TO SCALE
PRINT WITH BLACK INK ON TWO SIDED 4.75 X 5.50 SHEET

				MATERIAL WHITE PAPER				PRODUCT AND NAME P/N 133695	
				DIMENSIONAL TOLERANCES UNLESS OTHERWISE SPECIFIED				980 TEMPLATE AND INSTALLATION INSTRUCTIONS	
				XXX	XX	FRAC	ANG	DRAWN FJ HARRIS	DATE 6-12-97
				±.005	±.010	±.020	±1°	APPROVED	DATE
REVISIONS				SCALE 1:1		CAD FILE NAME: N/A		 H.B. IVES A HARROW COMPANY P.O. BOX 1887, NEW HAVEN, CONN. 06508	
SYM	DESCRIPTION	DATE	DWN.						