

NOTES:

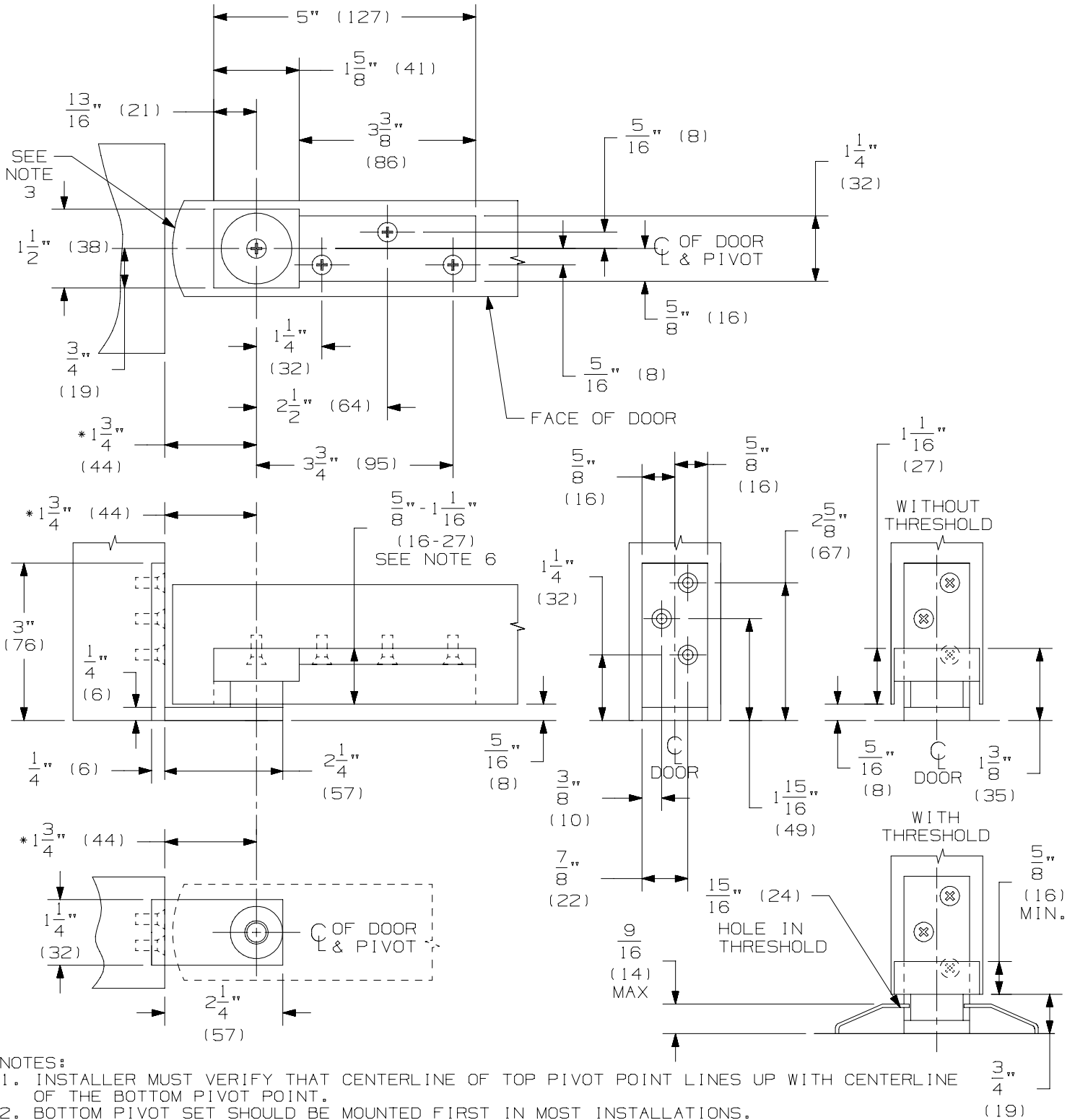
1. INSTALLER MUST VERIFY THAT CENTERLINE OF TOP PIVOT POINT LINES UP WITH THE CENTERLINE OF BOTTOM PIVOT POINT.
2. BOTTOM PIVOT SET SHOULD BE MOUNTED FIRST IN MOST INSTALLATIONS.
3. RADIUS OF HEEL EDGE OF DOOR MUST NOT EXCEED PIVOT POINT TO JAMB DISTANCE. STANDARD 2" RADIUS IS SHOWN.
4. PIVOTS MFG. TO ACCEPT 1/4-20 X 3/4 FPHMS OR #14 X 1-1/2 FPHWS.
- * 5. PIVOT CENTER MAY BE VARIED AS DESIRED. MINIMUM DISTANCE IS 1 3/4 AS SHOWN.
6. REINFORCING PER ANSI/SDI-100 RECOMMENDED FOR HOLLOW METAL DOORS & FRAMES.



7255J PIVOT SET
7255J TOP PIVOT



MAX DOOR WEIGHT - 500 LBS.



IVES

7255J PIVOT SET
7255J BOTTOM PIVOT

IR Security & Safety®

NOTE: DIMENSIONS IN () ARE MILLIMETERS.

TEMPLATE
NUMBER: INST.7255J_1.PG2

DATE:
05-24-02