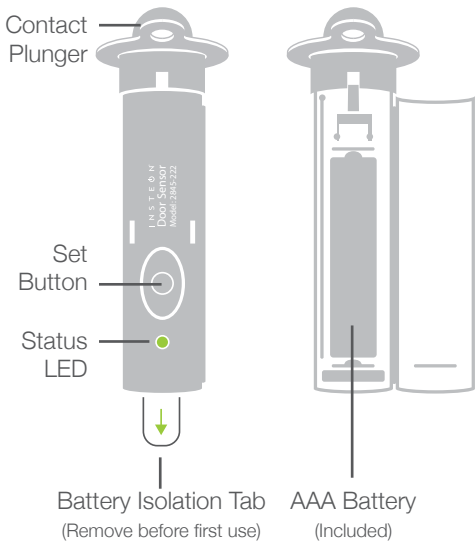


I N S T E O N[®]



Hidden Door Sensor
2845-x22
Quick Start Guide

Hidden Door Sensor



Spacer

Tools Needed for Installation



Power Drill



3/4-inch Auger Drill Bit
(Recommended)



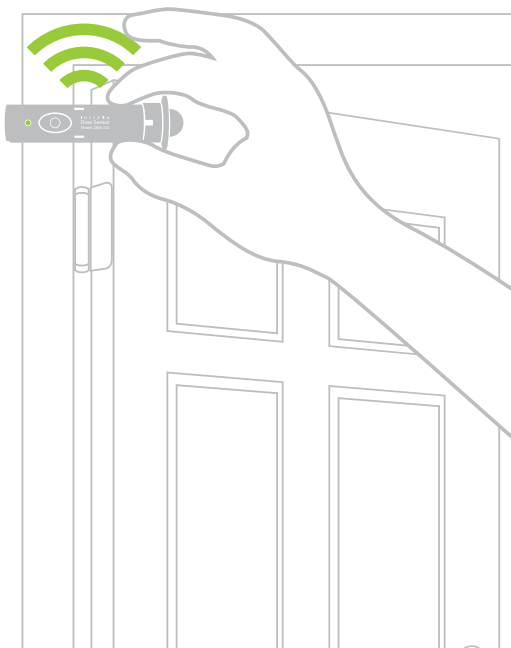
Phillips Screwdriver



We recommend using
Irwin Tools #88812 Speedbor Bit

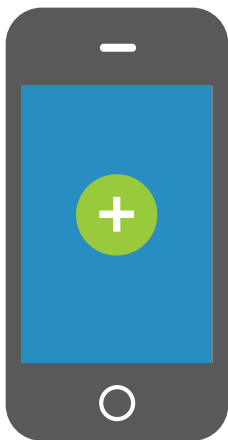
Test Your Location

- 1 Test your desired location first. Hold the Door Sensor in its intended location and try linking to your Hub or responder. If linking is unsuccessful, try repositioning the sensor or adding a Range Extender.



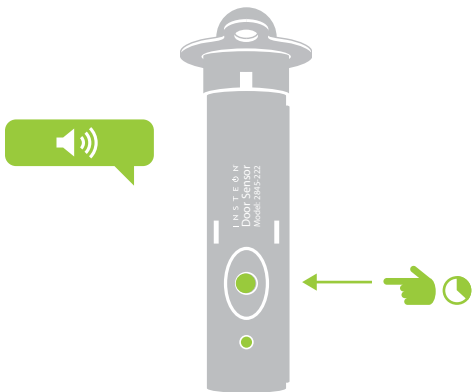
Linking to the Hub

- A** Follow the on-screen instructions to add your Door Sensor to the INSTEON Hub.



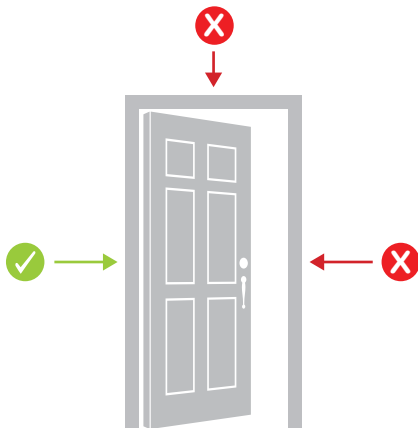
- ?** If not using the Hub, refer to the instructions that came with your product.

- B** When prompted, press and hold the Door Sensor's set button until the device beeps.



Installation

- 2 Locate the hole for Door Sensor in either the hinge-side of the door frame or the hinge-side of the door itself.

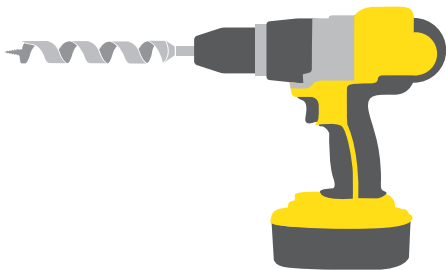
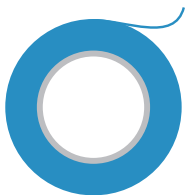


Also works with casement windows. Use Open/Close Sensor (2843-222) for sash windows.



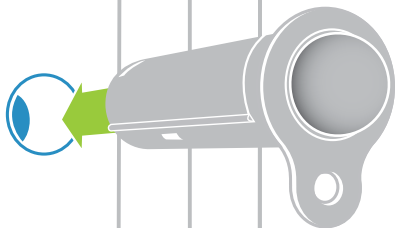
3

Place masking tape over any surfaces that may be marred by the drill chuck and drill a 4-inch deep, $\frac{3}{4}$ -inch diameter hole. If drilling into the door, have an assistant hold the door steady.



4

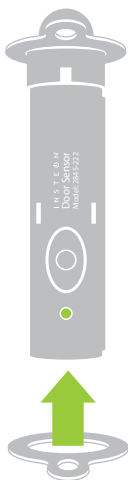
Clean out any wood shavings with a vacuum and test fit the sensor. When ready, insert the sensor into the hole and fasten with the included screw.



Installation of your Door Sensor is now complete.

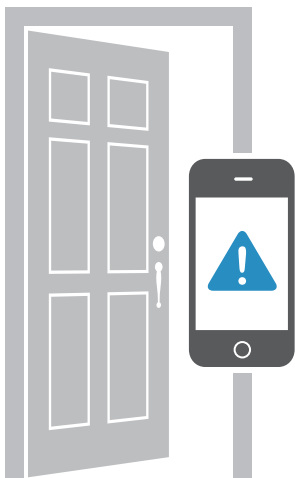
Spacer

If the gap between your door and door frame is too wide for Door Sensor, try using the included spacer. Slide the spacer over the Door Sensor to increase the thickness of the collar.



Configure Alerts

To receive email and text message alerts when a door or window is opened, switch on alerts from device settings within the INSTEON app.



Learn More

For the complete Owner's Manual, video tutorials, product support and more, visit:
insteon.com/support

