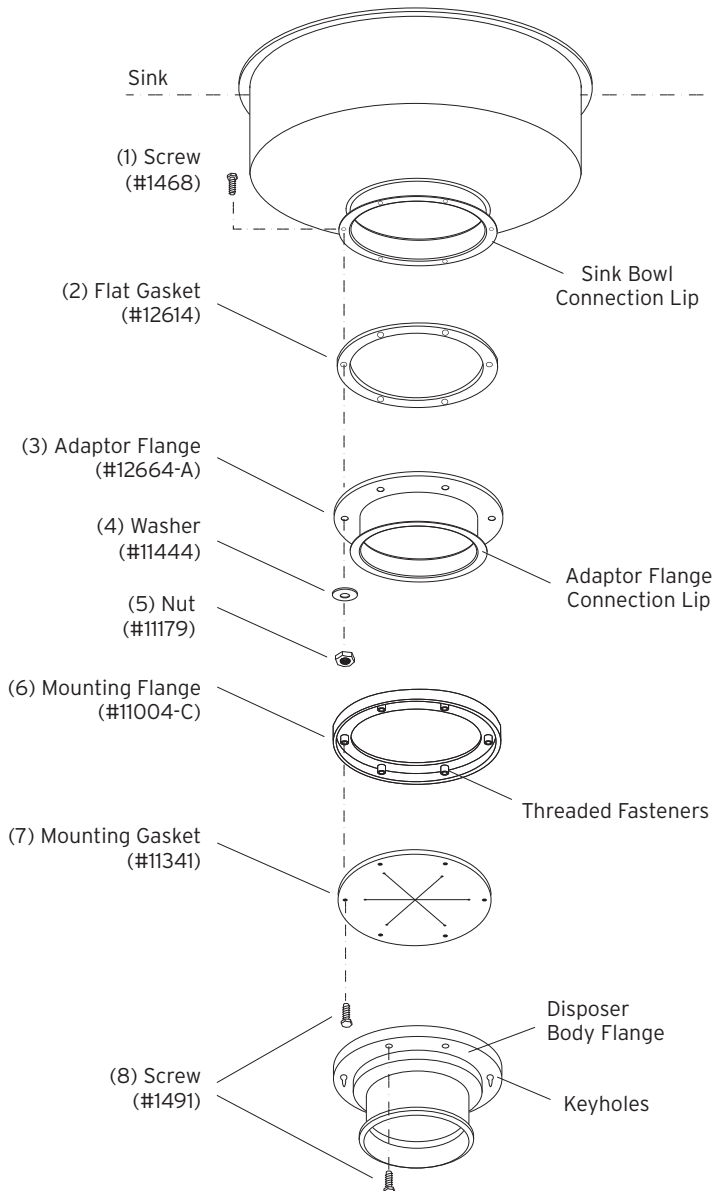


# Mounting Adaptor (#11599-B)

This adaptor will fit a sink opening of:  
**7" I.D. and 8-1/2" O.D.**  
 with 8-1/16" bolt hole circle (10 bolts)



## Installation Instructions

1. Place the flat gasket (2) on the sink bowl connection lip. Insert ten screws (1) through the sink bowl connection lip, flat gasket (2), and adaptor flange (3). With screws protruding through the adaptor flange (3), attach ten washers (4) and ten nuts (5). Tighten all screws evenly.
2. Place mounting flange (6) over the adaptor flange connection lip (3). Push mounting flange (6) up out of the way and fit inside groove of the mounting gasket (7) onto the adaptor flange connection lip (3).
3. Move mounting flange (6) down over mounting gasket (7). Be certain that the threaded fasteners in the mounting flange (6) fit into recesses in the top of the mounting gasket (7).
4. Attach two screws (8) through opposite holes in the mounting gasket (7), and into the threaded fasteners in the mounting flange (6). The screws (8) should be protruding approximately 1/4 inch below the mounting gasket (7).
5. Position the disposer beneath the mounting gasket (7) and engage the two protruding screws in the keyhole slots in the disposer body flange. Assemble the remaining four screws (8) and turn the disposer into place for plumbing connections. Tighten all screws evenly to secure the unit.