

Euro Cylinder CYEU Series

Application

INOX CYEU series cylinder is a manageable euro cylinder with keying ability suitable for commercial or residential application with specific access requirements

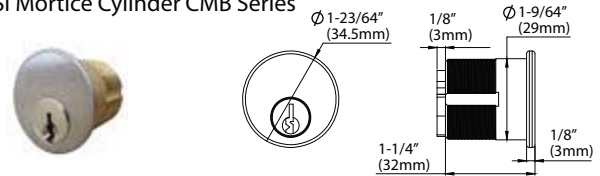
Specifications and Features

- Standard euro profile dimension according to DIN18252
- Solid brass body and keys
- Standard SC Keyway (Schlage C Keyway) for wide compatibility
- Various lengths available for different door thicknesses
- Symmetrical and asymmetrical variants available to work with different lock installation positions
- Master keying service available upon request
- Keying ability to suite with INOX ANSI Mortice Cylinder (CMB Series) and Rim Cylinder (CRB Series)
- Construction keying ability for use during the construction phase of a building; can later be easily removed and replaced with permanent keys
- Enhanced attack resistance provided by INOX Security Escutcheons

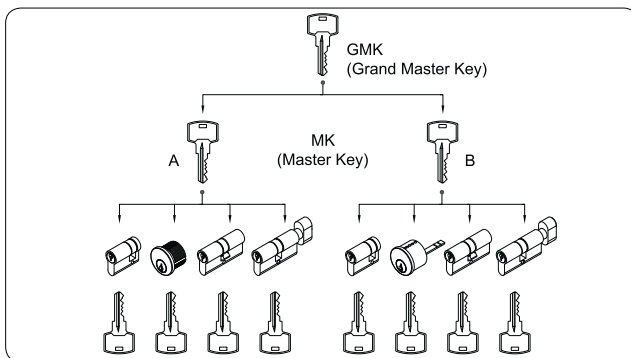
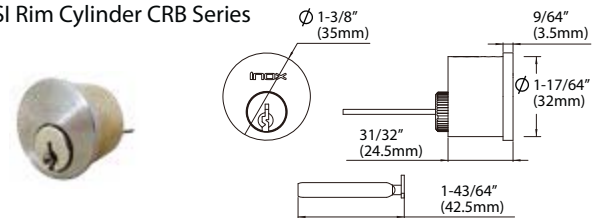


INOX Related Products

ANSI Mortice Cylinder CMB Series



ANSI Rim Cylinder CRB Series



Standards and Certification



Successfully type-tested for conformity to all of the requirements of EN1303:2005



Successfully passed 240-minutes fire test of metal door assemblies to EN1634-1:2014



All test performed independently and certified by Exova/Warringtonfire/Warrington APT. Test reports and/or certificates are available on request

EN1303:2005 Classification

1	6	0	1	0	C	5	2
---	---	---	---	---	---	---	---

Please refer to INOX ANSI catalogs for more information.

Finishes

- Satin Nickel (SN)
- Brass Polished (BP)
- Nickel Plated (NP)
- * Other finishes available on request

INOX Mortice Lock Options

- MB7200 Series
- MB8500 Series
- MD7200 Series
- MD8500 Series

INOX Security Escutcheons



EC-SE30



EC-SE35

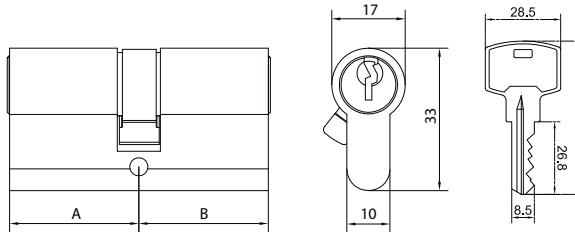
EC-SE30: Security Escutcheon for Euro Cylinder
 EC-SE35: Security Escutcheon for Euro Cylinder with Cover Protection Rose

Euro Cylinder CYEU Series

Available Functions

**Double Profile Cylinder**

Application: Keyed operation from either side (inside or outside).



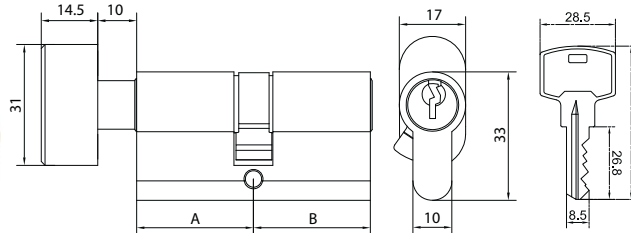
* Dimensions in mm

Item No

CYEU-3030
CYEU-3035
CYEU-3535
CYEU-4040

**Double Profile Cylinder with Thumbturn**

Application: Keyed operation from one side (outside) and thumbturn operated from the other side (inside).



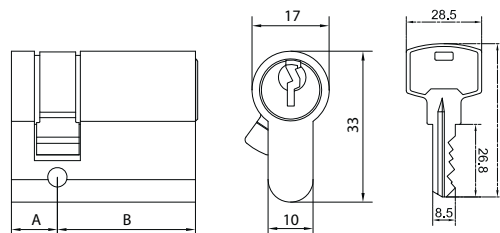
* Dimensions in mm

Item No

CYEU-3030TK
CYEU-3035TK
CYEU-3535TK
CYEU-4040TK

**Single Profile Cylinder**

Application: Keyed operation from one side (outside) only.



* Dimensions in mm

Item No

CYEU-1030
CYEU-1035
CYEU-1040
CYEU-1045