

INSTALLATION INSTRUCTIONS FOR NRG-4XXX SERIES LUMINAIRE

WARNING: To reduce fire and shock hazard: Disconnect power before servicing; install and maintain to meet applicable codes; ensure fixture and wiring are properly grounded.

This luminaire is designed for canopy/ceiling mounting over a four-inch junction box or feed-through wiring.

Read all instructions, electrical data markers, and warning labels before installing this luminaire. File this instruction sheet for future references.

CEILING FIXTURE - JUNCTION BOX MOUNTING:

1. Remove refractor (J) from housing (E) by removing the (4) corner screws (H). Remove reflector (F) from housing (E) by removing the (2) reflector mounting screws (G). Set reflector, refractor, and mounting screws aside. See Figure 1.
2. Install housing (E) to the ceiling using the (3) holes (S) provided on top of housing. (Hardware by others). See Figure 2.
3. Connect the wires to the supply leads in accordance with the local and national electrical code. Push all the connections inside the junction box.
4. Route wires thru opening in collar and place wiring cover (K) over wire entry, then tighten the (2) screws (L). See Figure 3.
5. Replace reflector (F). Tighten the (2) screws (G). See Figure 1.
6. Install the lamp (M) to socket (N). See Figure 1.
7. Replace refractor (J). Tighten the (4) corner screws (H). See Figure 1.

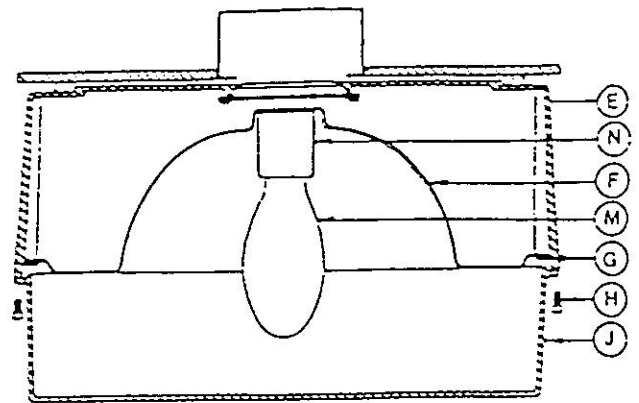


FIGURE 1

CEILING FIXTURE - THROUGH WIRING

1. Remove refractor (J) from housing (E) by removing the (4) corner screws (H). Remove reflector (F) from housing (E) by removing the (2) reflector mounting screws (G). Set reflector, refractor, and mounting screws aside. See Figure 1.
2. Remove (2) pipe plugs (P) and wiring cover (T). See Figure 2.
3. Install housing (E) to the ceiling using the (3) holes (S) provided on top of housing. (Hardware by others). See Figure 2.
4. Engage the supply conduit to the threaded hubs (R). See Figure 2.
5. Connect the wires to the supply leads in accordance with the local and national electrical code.
6. Replace the wiring cover (T). See Figure 2.
7. Place wiring cover (K) over wire entry and tighten the (2) screws (L). See Figure 3.
8. Replace reflector (F). Tighten the (2) screws (G). See Figure 1.
9. Install the lamp (M) to socket (N). See Figure 1.
10. Replace refractor (J). Tighten the (4) corner screws (H). See Figure 1.

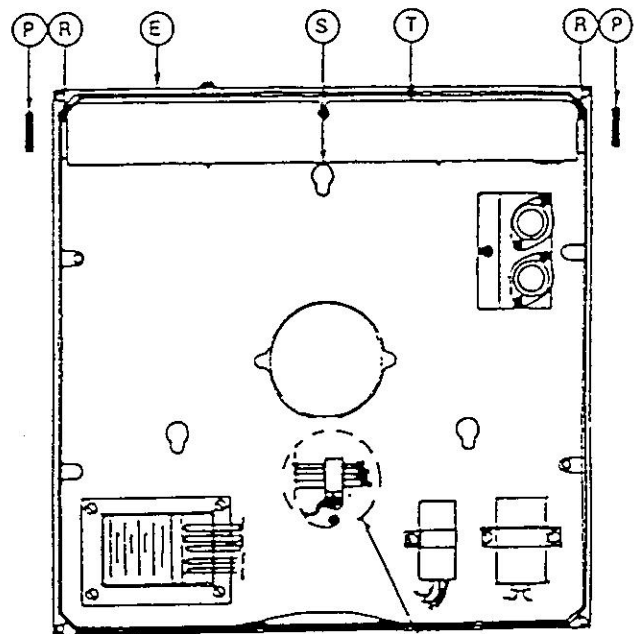


FIGURE 2

FIGURE A

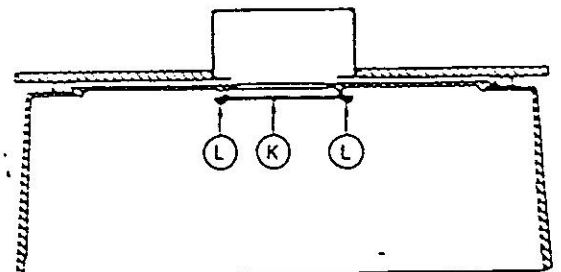


FIGURE 3



Hubbell Lighting, Inc.
 A Subsidiary of Hubbell Incorporated
 2000 Electric Way
 Christiansburg, VA 24073-2500
 (703) 382-6111
 FAX (703) 382-1526

268-0533-9701

ORIGINAL DRAWING