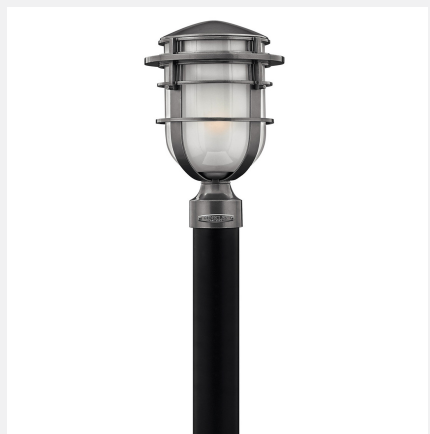


Large Post Top or Pier Mount Lantern 1951HE



ITEM NUMBER	1951HE
BRAND	Hinkley Lighting
MATERIAL	Cast Aluminum
GLASS	Inside Etched
HEIGHT	16.3"
WIDTH	9.0"
VOLTAGE	120v
WATTAGE	1-100w Med.
CERTIFICATION	C-US Wet Rated

FEATURES AND BENEFITS

- Suitable for use in wet (interior direct splash and outdoor direct rain or sprinkler) locations as defined by NEC and CEC. Meets United States UL Underwriters Laboratories & CSA Canadian Standards Association Product Safety Standards
- For complete warranty information visit [\(hyperlink\)](#)
- 2 year finish warranty
- 12 year warranty on electrical wiring and components
- Classic, modern style with a nautical flair adds elegance to a variety of exteriors
- Rich gray tone

FINISH	Hematite
--------	----------

AT HINKLEY, WE EMBRACE THE DESIGN PHILOSOPHY THAT YOU CAN MERGE TOGETHER THE LIGHTING, FURNITURE, ART, COLORS AND ACCESSORIES YOU LOVE INTO A BEAUTIFUL ENVIRONMENT THAT DEFINES YOUR OWN PERSONAL STYLE. WE HOPE YOU WILL BE INSPIRED BY OUR COMMITMENT TO KEEP YOUR 'LIFE AGLOW.'

life AGLOW®