

DESCRIPTION

Halo-2 Power-Trac system provides two separate 20 AMP circuits. Each circuit can be independently switched. Provides maximum flexibility, with a miniature profile. Suitable for a wide range of commercial, merchandising and residential applications. Electrical capacity is 20 AMPS per circuit when properly balanced. Installing lampholders is simple. An adjustable contact allows selection of the circuit position. Lift or lower the contact until it touches the plastic stop of the assembly. For circuit #1 move contact to the down position. For circuit #2 move contact to the up position. Halo 2-CircuitTrack accepts both Halo and Lazer-by-Halo lampholders.

| | | |
|-------------|--|------|
| Catalog # | | Type |
| Project | | |
| Comments | | Date |
| Prepared by | | |

SPECIFICATION FEATURES

A. Structural

- Extruded aluminum .060" [1.5mm] nominal wall thickness. Halo-2 Power-Trac is 11/16" (17.5mm) deep by 1-3/8" (35mm) wide. Same as HaloMiniature Trac.

B. Line Conductors

- Solid copper bus bars [cross section equivalent to #12 AWG wire. Encased in rigid extruded PVC insulators.

C. Insulating Liner

- Rigid extruded polyvinyl insulators.

D. Ground Conductor

- Exclusive independent grounding bus conductor. Maintains an independent positive ground #12 AWG path between lampholder, Trac channel and building's ground system.

E. Neutral Conductor

- Cross section equivalent of #12 AWG wire.

F. Polarity Indicator (Neutral)

- Visual polarity groove indicates proper electrical installation of lampholder adapter. All Halo-2 Power-Trac is shipped from the

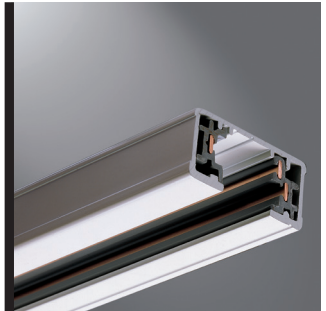
factory with a "LEFT" dead end installed. The L941 Live End Connector is designed to attach to the right hand side of the track. Locate small polarity indicator on the connector and align with polarity groove on track.

Listings

- cULus listed for use with Halo and Lazer-by-Halo lampholders.

Mounting

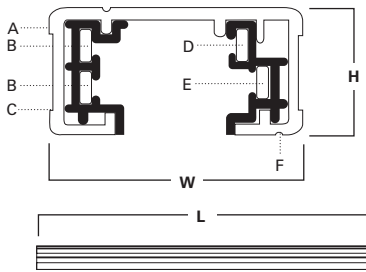
- Track system is recommended for ceiling mount only. For alternate mounting methods consult factory.



L641, L642, L643

MINIATURE TWO CIRCUIT TRAC SYSTEM

Power -Trac



| | L | W | H |
|----------------------------|----------------------|------------------|------------------|
| L641 4' Nominal | 42-5/8" [1083mm] | 1-3/8" [35mm] | 11/16" [18mm] |
| L642 8' Nominal | 90-5/8" [2302mm] | 1-3/8" [35mm] | 11/16" [18mm] |
| L643 12' Nominal | 138-5/8" [3521mm] | 1-3/8" [35mm] | 11/16" [18mm] |

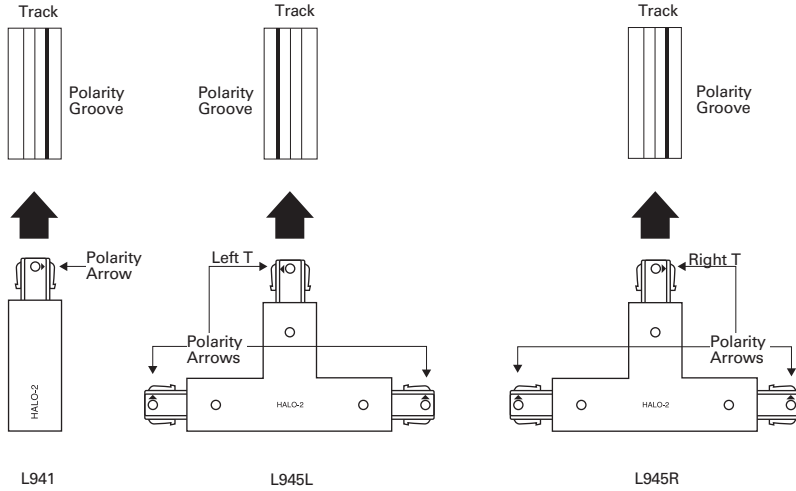
ORDERING INFORMATION

SAMPLE NUMBER: L651MB

| Track | Finishes | Connectors (Order Separately) | Accessories (Order Separately) | Current Limiters (Order Separately) |
|-----------------------------------|---------------------|--|--|---|
| L641= 4' L642= 8' L643= 12' | P=White MB=Black | L900=Outlet Box Cover L941=Live End Connector L942=Flexible Connector L943=Straight/"L" Connector L945L=Left "T" Connector L945R=Right "T" Connector L946="X" Connector L947=Conduit Connector L949=Mini Joiner L980=Live End Conduit Adapter L989=Conduit Continuation Kit DE641=Dead End Finishes P=White MB=Black | L18=18" Steel Stem L36=36" Steel Stem L48=48" Steel Stem L951=Wire Way Cover for Pendant Assembly Kit L983=T-Bar Attachment Clip L992=Pendant Kit assembly L994=Pendant Adapter Finishes P=White MB=Black | Current Limiter - End Feed Circuit 1 Breaker *CB1=Circuit 1 Breaker LC941CB120=120W (1A @ 120V) Circuit 2 Breaker *CB2=Circuit 2 Breaker LC941CB1200=1200W (10A @ 120V) LC941CB300=300W (2.5A @ 120V) LC941CB600=600W (5A @ 120V) LC941CB960=960W (8A @ 120V) Current Limiter - Center Feed LC943=LC943 Circuit 1 Breaker *CB1=Circuit 1 Breaker LC943CB1200=1200W (10A @ 120V) Circuit 2 Breaker *CB2=Circuit 2 Breaker LC943CB120=120W (1A @ 120V) LC943CB300=300W (2.5A @ 120V) LC943CB600=600W (5A @ 120V) LC943CB960=960W (8A @ 120V) Finishes P=White MB=Black |

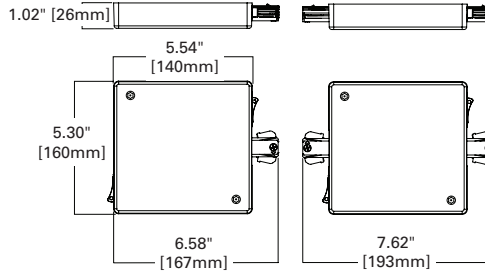
Polarity Indicators

Neutral is indicated on two circuit power track by the groove placed along the flange of the track. The connectors show neutral polarity by the arrow on the end of the connector. The left handed T connector, L945L has an arrow facing left when the crossbar of the T is at the bottom, and "Halo-2" is right-reading. The L945R, a right handed T connector has the arrow facing right when the crossbar of the T is at the bottom, and "Halo-2" is right-reading.



LC941, LC943 Current Limiter - End and Center Feeds

End-feed and Center-feed capable:
Five breaker sizes are available. Consult factory if other sizes are required. Can be utilized on hard or grid ceilings. Can be used with pendant suspended track. Breaker can be used as an on-off switch. Breaker features a "tripped" condition indicator. Feeds employing two circuit breakers do not require breakers to be the same size. Each breaker can be sized according to desired load. cULus Listed.



**LC941
LC943**

ORDERING INFORMATION

SAMPLE NUMBER: LC941CB120P

| Feed Type | Circuit 1 Breaker | Circuit 2 Breaker | Finish |
|--|----------------------------------|----------------------------------|-------------------------------------|
| LC941 = Halo Power-Trac 2-Circuit End Feed | CB120 =120W (1A @120V) | CB120 =120W (1A @120V) | P =White MB =Black |
| LC943 = Halo Power-Trac 2-Circuit Center Feed | CB300 =300W (2.5A @120V) | CB300 =300W (2.5A @120V) | |
| | CB600 =600W (5A @120V) | CB600 =600W (5A @120V) | |
| | CB960 =960W (8A @120V) | CB960 =960W (8A @120V) | |
| | CB1200 =1200W (10A @120V) | CB1200 =1200W (10A @120V) | |



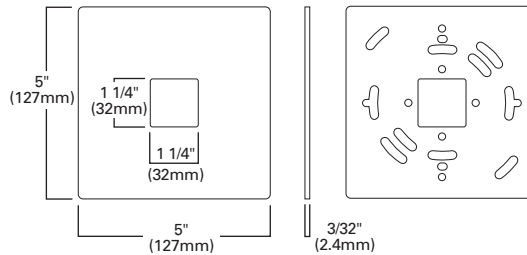
L900 - Outlet Box Cover

Can be used at any electrical feed connection point (Live, Straight, L, T or X). Drill guides on back for virtually all standard outlet boxes. Size: 5" sq. Screws included.
Color codes: P (White), MB (Black)

ORDERING INFORMATION

SAMPLE NUMBER: L900P

| Connector | Finish |
|--------------------------------|-------------------------------------|
| L900 = Outlet Box Cover | P =White MB =Black |



L900

L941 - Live End Connector

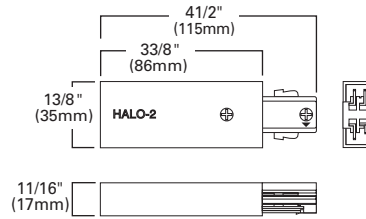
To start a run. Right hand polarity. (Left hand polarity live end connector available. Consult factory).

Color codes: P (White), MB (Black)

ORDERING INFORMATION

SAMPLE NUMBER: L941P

| Connector | Finish |
|--------------------------|---------------------|
| L941= Live End Connector | P=White MB=Black |



L941

L942 - Flex Joiner

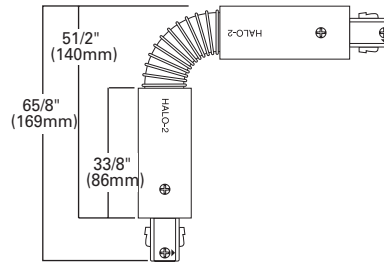
To connect two track sections at any angle up to 90°, in either plane or wall to ceiling or pitched ceiling applications.

Color codes: P (White), MB (Black)

ORDERING INFORMATION

SAMPLE NUMBER: L942P

| Connector | Finish |
|-------------------|---------------------|
| L942= Flex Joiner | P=White MB=Black |



L942

L943 - Straight / L Connector

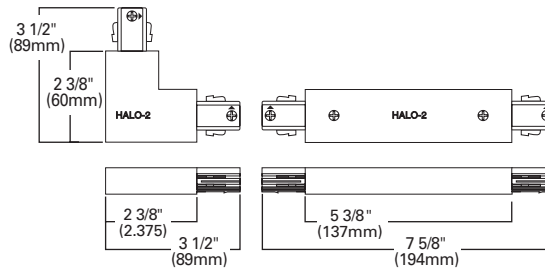
To connect two track sections end-to-end or at a 90° angle. May be used as feed point.

Color codes: P (White), MB (Black)

ORDERING INFORMATION

SAMPLE NUMBER: L943P

| Connector | Finish |
|------------------------------|---------------------|
| L943= Straight / L Connector | P=White MB=Black |



L943

L945R - Right T Connector

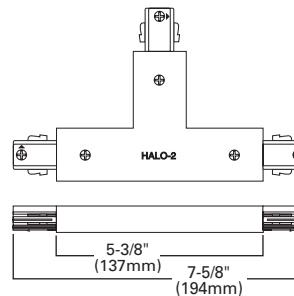
"T" connector for joining three track sections with right hand polarity. May be used as feed point.

Color codes: P (White), MB (Black)

ORDERING INFORMATION

SAMPLE NUMBER: L945RP

| Connector | Finish |
|--------------------------|---------------------|
| L945R= Right T Connector | P=White MB=Black |



L945R

L945L - Left T Connector

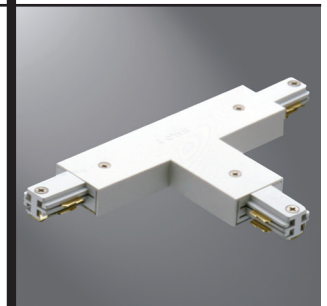
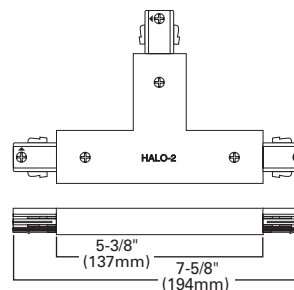
"T" connector for joining three track sections with left hand polarity. May be used as feed point.

Color codes: P (White), MB (Black)

ORDERING INFORMATION

SAMPLE NUMBER: L945LP

| Connector | Finish |
|-------------------------|---------------------|
| L945L= Left T Connector | P=White MB=Black |



L945L

L946 - X Connector

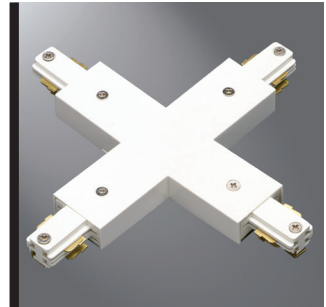
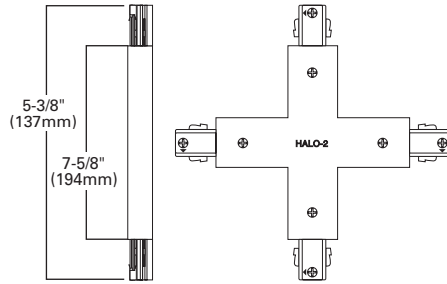
To connect four track section into a cross configuration. May be used for feed point.

Color codes: P (White), MB (Black)

ORDERING INFORMATION

SAMPLE NUMBER: L946P

| Connector | Finish |
|-------------------|---------------------|
| L946= X Connector | P=White MB=Black |



L946

L947 - Conduit Connector

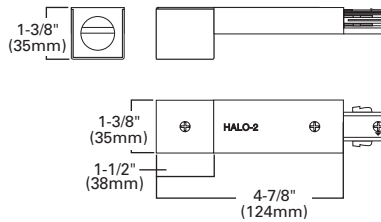
A live end connector for use with surface conduit. Designed to accept standard 1/2" conduit fitting (not included). May be used for feed point.

Color codes: P (White), MB (Black)

ORDERING INFORMATION

SAMPLE NUMBER: L947P

| Connector | Finish |
|-------------------------|---------------------|
| L947= Conduit Connector | P=White MB=Black |



L947

L949 - Mini Joiner

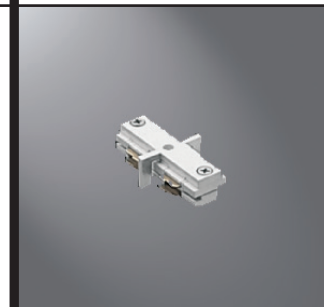
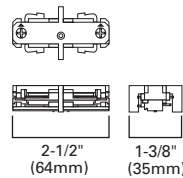
To join two straight track sections end-to-end. Not a feed point.

Color codes: P (White), MB (Black)

ORDERING INFORMATION

SAMPLE NUMBER: L949P

| Connector | Finish |
|-------------------|---------------------|
| L949= Mini Joiner | P=White MB=Black |



L949

L951 - Wire Way Cover for Pendant Assembly Kit

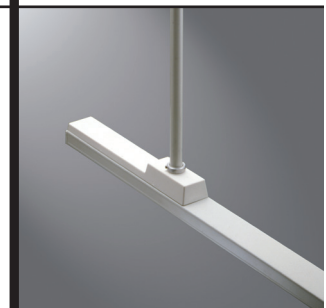
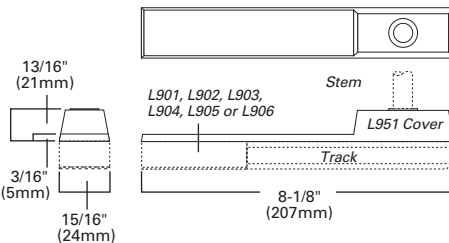
For track to be wired through stem (one for each live end used). Shown with end feed and pendant stem kit—order separately.

Color codes: P (White), MB (Black)

ORDERING INFORMATION

SAMPLE NUMBER: L951P

| Connector | Finish |
|---|---------------------|
| L951= Wire Way Cover for Pendant Assembly Kit | P=White MB=Black |



L951

L983 - T-Bar Attachment Clip

Allows track to be attached to inverted tee ceiling. Order as follows:

2 kits for 4' Trac; 3 kits for 8' Trac and 4 kits for 12' Trac.

L986 Mini-T Bar Clip

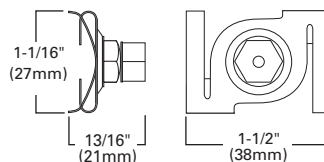
For mounting track on suspended ceilings with mini-grid (9/16" wide) system.

Color codes: P (White), MB (Black)

ORDERING INFORMATION

SAMPLE NUMBER: L983P

| Connector | Finish |
|-----------------------------|---------------------|
| L983= T-Bar Attachment Clip | P=White MB=Black |
| L986= Mini T-Bar Clip | P=White MB=Black |

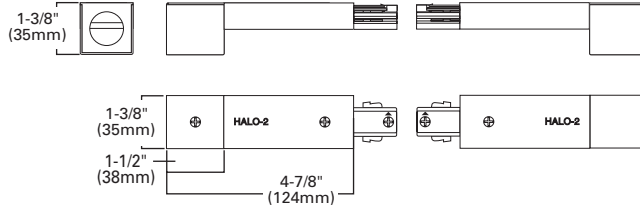


L983

L989 - Conduit Continuation Kit

Includes one left and one right feed. To continue a run around obstructions with 1/2" trade size surface conduit.

Color codes: P (White), MB (Black)



L989

ORDERING INFORMATION

SAMPLE NUMBER: L989P

| Connector | Finish |
|--------------------------------|---------------------|
| L989= Conduit Continuation Kit | P=White MB=Black |

L929 - Floating Canopy and Connector

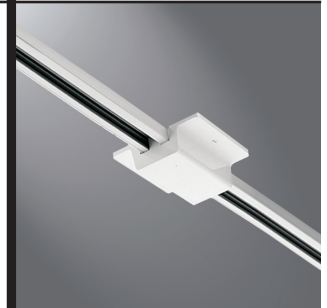
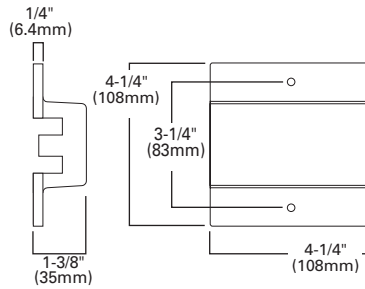
Can be connected anywhere along length of Trac. Comes with canopy cover, connector, dead-end and mounting hardware.

Color codes: P (White), MB (Black)

ORDERING INFORMATION

SAMPLE NUMBER: L929P

| Connector | Finish |
|-------------------------------------|---------------------|
| L929= Floating Canopy and Connector | P=White MB=Black |



L929

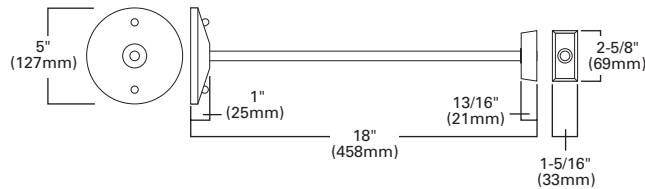
L992 - Pendant Kit Assembly

To suspend track from ceiling. Order as follows: 2 kits for 4' Trac; 3 kits for 8' Trac; and 4 kits for 12' Trac. Includes one 18" threaded steel stem, canopy and mounting hardware.

L48 48" Steel Stem

For additional length with L992. Can be field cut.

Color codes: P (White), MB (Black)



L992

ORDERING INFORMATION

SAMPLE NUMBER: L992P

| Connector | Finish |
|----------------------------|---------------------|
| L992= Pendant Kit Assembly | P=White MB=Black |

L994 - Pendant Adapter

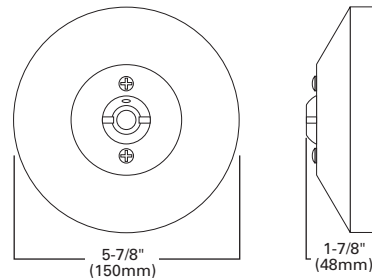
For installing pendant mounted Power-Trac on sloped ceiling. For use with L992.

Color codes: P (White), MB (Black)

ORDERING INFORMATION

SAMPLE NUMBER: L994P

| Connector | Finish |
|-----------------------|---------------------|
| L994= Pendant Adapter | P=White MB=Black |



L994

DE641 - Dead End

Color codes: P (White), MB (Black)

ORDERING INFORMATION

SAMPLE NUMBER: DE641P

| Connector | Finish |
|-----------------|---------------------|
| DE641= Dead End | P=White MB=Black |



DE641