

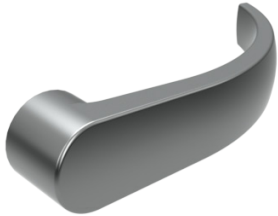
## 47KE

**Description:** Rim > 4700 Series Key-In-Lever Trim

<p><b>Function</b> - 08 - Entrance by lever (key locks or unlocks lever)</p> <p><b>Finishes</b> - ALM, DBZ, US3, US32D</p> <p><b>Levers</b> - Archer, August, Withnell - Free-wheeling</p> <p><b>Projection</b> - Archer - 3-1/16" (78 mm), August - 3-3/16" (80 mm), Withnell - 3-1/16 (78 mm)</p> <p><b>Standard Door Prep</b> - 2-1/8" (54 mm) diameter (cross bore)</p> <p><b>Certifications</b> - ADA compliant ANSI A117.1 Accessibility Code (levers only) - Turtle Prep compatible ANSI A156.115</p> <p><b>Rose Diameter</b> - 3-3/8" (86 mm)</p>	<p><b>Keys</b> - Two brass keys per lock</p> <p><b>Cylinders</b> - Brass - keyed different - C Keyway - Drilled 6-pin, keyed 5-pin (standard) - Other keying options available from factory - Interchangeable core - brass 6-pin - uncombined and combined (sold separately)</p> <p><b>Door Thickness</b> - 1-3/4" (45 mm) - 2" (51 mm)</p> <p><b>Backset</b> - 2-3/4" (70 mm) - standard frame and door (161 or Turtle Prep) - Exit device dependent</p> <p><b>Notes</b> - 4700 trim have steel bodies and zinc handles. The exception being US32D which is stainless.</p>
---	---



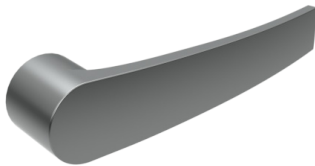
## HAGER EXIT DEVICE LEVER OPTIONS



### ARCHER LEVER

Available on:

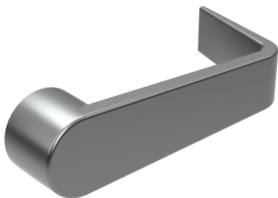
- 4500 Series Trim (45BE, 45CE, 45DT, 45NL)
- 4500 Series Trim Electrified (45ET)
- 4700 Series Trim (47BE, 47CE, 47DT, 47NL)
- 4700 Series Key-in-Lever Trim (47KD, 47KE, 47KN, 47KP)



### AUGUST LEVER

Available on:

- 4500 Series Trim (45BE, 45CE, 45DT, 45NL)
- 4500 Series Trim Electrified (45ET)
- 4700 Series Trim (47BE, 47CE, 47DT, 47NL)
- 4700 Series Key-in-Lever Trim (47KD, 47KE, 47KN, 47KP)



### WITHNELL LEVER

Available on:

- 4500 Series Trim (45BE, 45CE, 45DT, 45NL)
- 4500 Series Trim Electrified (45ET)
- 4700 Series Trim (47BE, 47CE, 47DT, 47NL)
- 4700 Series Key-in-Lever Trim (47KD, 47KE, 47KN, 47KP)

