

47KP

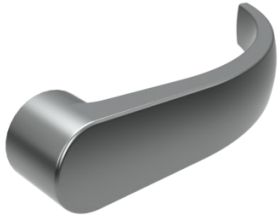
Description: Rim > 4700 Series Key-In-Lever Trim



Function	- 14 - Entrance by trim when latch bolt is released by lever (always active, no cylinder)	Keys	- Two brass keys per lock
Finishes	- ALM, DBZ, US3, US32D	Cylinders	- Brass - keyed different - C Keyway - Drilled 6-pin, keyed 5-pin (standard) - Other keying options available from factory - Interchangeable core - brass 6- and 7-pin - uncombined and combined (sold separately)
Levers	- Archer, August, Withnell - Free-wheeling	Door Thickness	- 1-3/4" (45 mm) - 2" (51 mm)
Projection	- Archer - 3-1/16" (78 mm), August - 3-3/16" (80 mm), Withnell - 3-1/16 (78 mm)	Backset	- 2-3/4" (70 mm) - standard frame and door (161 or Turtle Prep) - Exit device dependent
Standard Door Prep	- 2-1/8" (54 mm) diameter (cross bore)	Notes	- 4700 trim have steel bodies and zinc handles. The exception being US32D which is stainless.
Certifications	- ADA compliant ANSI A117.1 Accessibility Code (levers only) - Turtle Prep compatible ANSI A156.115		
Rose Diameter	- 3-3/8" (86 mm)		



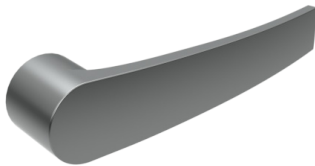
HAGER EXIT DEVICE LEVER OPTIONS



ARCHER LEVER

Available on:

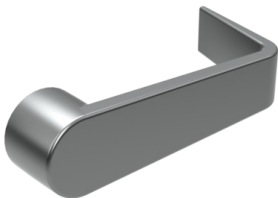
- 4500 Series Trim (45BE, 45CE, 45DT, 45NL)
- 4500 Series Trim Electrified (45ET)
- 4700 Series Trim (47BE, 47CE, 47DT, 47NL)
- 4700 Series Key-in-Lever Trim (47KD, 47KE, 47KN, 47KP)



AUGUST LEVER

Available on:

- 4500 Series Trim (45BE, 45CE, 45DT, 45NL)
- 4500 Series Trim Electrified (45ET)
- 4700 Series Trim (47BE, 47CE, 47DT, 47NL)
- 4700 Series Key-in-Lever Trim (47KD, 47KE, 47KN, 47KP)



WITHNELL LEVER

Available on:

- 4500 Series Trim (45BE, 45CE, 45DT, 45NL)
- 4500 Series Trim Electrified (45ET)
- 4700 Series Trim (47BE, 47CE, 47DT, 47NL)
- 4700 Series Key-in-Lever Trim (47KD, 47KE, 47KN, 47KP)

