



## 47CE

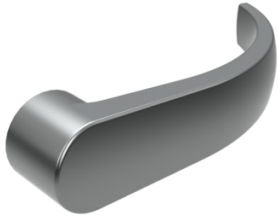
**Description:** Rim > 4700 Series Trim

Function	- 08 - Key Locks or Unlocks Lever
Lever	- Archer, August, or Withnell levers available
Escutcheon	- 2-5/8" (67 mm) x 8" (203 mm)
Finishes	- US3, ALM, DBZ, US32D
Cylinder	- Mortise cylinder sold separately

Notes	<ul style="list-style-type: none"> <li>- If using shim kits, you must specify thickness of the door, including the thickness of the shims that will be used for both the trim and exit device</li> <li>- 4700 trim have steel bodies and zinc handles. The exception being US32D which is stainless.</li> </ul>
-------	---



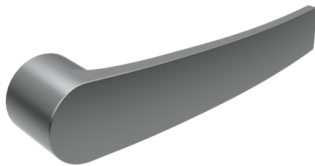
## HAGER EXIT DEVICE LEVER OPTIONS



### ARCHER LEVER

Available on:

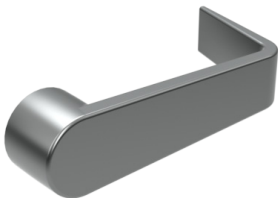
- 4500 Series Trim (45BE, 45CE, 45DT, 45NL)
- 4500 Series Trim Electrified (45ET)
- 4700 Series Trim (47BE, 47CE, 47DT, 47NL)
- 4700 Series Key-in-Lever Trim (47KD, 47KE, 47KN, 47KP)



### AUGUST LEVER

Available on:

- 4500 Series Trim (45BE, 45CE, 45DT, 45NL)
- 4500 Series Trim Electrified (45ET)
- 4700 Series Trim (47BE, 47CE, 47DT, 47NL)
- 4700 Series Key-in-Lever Trim (47KD, 47KE, 47KN, 47KP)



### WITHNELL LEVER

Available on:

- 4500 Series Trim (45BE, 45CE, 45DT, 45NL)
- 4500 Series Trim Electrified (45ET)
- 4700 Series Trim (47BE, 47CE, 47DT, 47NL)
- 4700 Series Key-in-Lever Trim (47KD, 47KE, 47KN, 47KP)

