



45ET (Electrified)

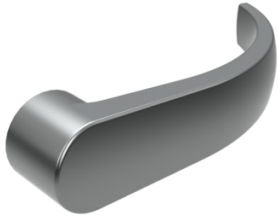
Description: Electrified Devices > Trim (Electrified)



Function	<ul style="list-style-type: none"> - 45ET EL - Electric Trim (Fail Safe) - 45ET EU - Electric Trim (Fail Secure) 	Voltage	<ul style="list-style-type: none"> - .33 AMP @ 24 Volts AC or DC +/- 10% (continuous duty) - .61 AMP @ 12 Volts AC or DC +/- 10% (continuous duty)
Lever	<ul style="list-style-type: none"> - Archer, August, or Withnell - Free-wheeling 	Wire Requirements	<ul style="list-style-type: none"> - EL and EU functions require 2 wires for power per device - Status switches (i.e. RX, LM, etc.) require 2 wires per switch to monitor a normally open (NO) or normally closed (NC) position - All devices provide 3 wires per switch so both NO and NC positions can be monitored - Monitoring both positions will require 3 wires per switch
Escutcheon	<ul style="list-style-type: none"> - 2-3/4" (70 mm) x 10-10-3/4" (273 mm) 		
Finishes	<ul style="list-style-type: none"> - US3, US4, US10, US10B, US26, US26D 		
Cylinders	<ul style="list-style-type: none"> - Mortise cylinder, 1-1/4" or larger 		
Warranty	<ul style="list-style-type: none"> - One-year on electrified components - Lifetime on hardware components 		



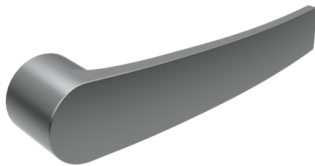
HAGER EXIT DEVICE LEVER OPTIONS



ARCHER LEVER

Available on:

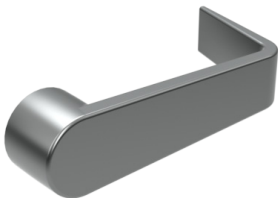
- 4500 Series Trim (45BE, 45CE, 45DT, 45NL)
- 4500 Series Trim Electrified (45ET)
- 4700 Series Trim (47BE, 47CE, 47DT, 47NL)
- 4700 Series Key-in-Lever Trim (47KD, 47KE, 47KN, 47KP)



AUGUST LEVER

Available on:

- 4500 Series Trim (45BE, 45CE, 45DT, 45NL)
- 4500 Series Trim Electrified (45ET)
- 4700 Series Trim (47BE, 47CE, 47DT, 47NL)
- 4700 Series Key-in-Lever Trim (47KD, 47KE, 47KN, 47KP)



WITHNELL LEVER

Available on:

- 4500 Series Trim (45BE, 45CE, 45DT, 45NL)
- 4500 Series Trim Electrified (45ET)
- 4700 Series Trim (47BE, 47CE, 47DT, 47NL)
- 4700 Series Key-in-Lever Trim (47KD, 47KE, 47KN, 47KP)

