



## 45CE

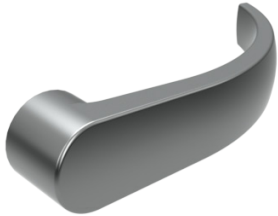
**Description:** Rim > 4500 Series Trim



Function	- 08 - Key Locks or Unlocks Lever	Escutcheon	- 2-3/4" (70 mm) x 10-3/4" (273 mm)
Lever	- Archer, August and Withnell levers available - Free-wheeling	Finishes	- US3, US4, US10, US10B, US26, US26D
		Cylinder	- Mortise Cylinder



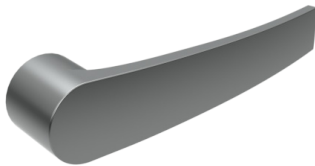
## HAGER EXIT DEVICE LEVER OPTIONS



### ARCHER LEVER

Available on:

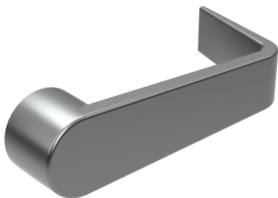
- 4500 Series Trim (45BE, 45CE, 45DT, 45NL)
- 4500 Series Trim Electrified (45ET)
- 4700 Series Trim (47BE, 47CE, 47DT, 47NL)
- 4700 Series Key-in-Lever Trim (47KD, 47KE, 47KN, 47KP)



### AUGUST LEVER

Available on:

- 4500 Series Trim (45BE, 45CE, 45DT, 45NL)
- 4500 Series Trim Electrified (45ET)
- 4700 Series Trim (47BE, 47CE, 47DT, 47NL)
- 4700 Series Key-in-Lever Trim (47KD, 47KE, 47KN, 47KP)



### WITHNELL LEVER

Available on:

- 4500 Series Trim (45BE, 45CE, 45DT, 45NL)
- 4500 Series Trim Electrified (45ET)
- 4700 Series Trim (47BE, 47CE, 47DT, 47NL)
- 4700 Series Key-in-Lever Trim (47KD, 47KE, 47KN, 47KP)

