



3800 Series - Escutcheon

Description: Mortise Locks > Escutcheon

Application: Heavy Duty Commercial, Industrial, Institutional



Standard Door Prep	<ul style="list-style-type: none"> - 3 5/8" (92 mm) Center of cylinder to spindle - 2 7/16" (62 mm) Center of thumbturn to spindle 	Door Thickness	<ul style="list-style-type: none"> - 1 3/8" (35 mm) - 2 1/2" (64 mm) Steel Door - 1 3/4" (45 mm) - 2 1/2" (64 mm) Wood Door
Certifications	<ul style="list-style-type: none"> - BHMA Certified ANSI A156.13, Series 1000, Grade 1, Operational and Security - ADA Compliant ANSI A 117.1 Accessibility Code - UL/cUL Listed for all functions up to 3 hours for "A" label single doors - UL10C/UBC 7-2 (1997) Positive Pressure Rated - UL 10B Negative Pressure Rated 	Backset	<ul style="list-style-type: none"> - 2 3/4" (70 mm) Only
Exposed Trim	<ul style="list-style-type: none"> - Forged Brass, Cast Stainless Steel, or Cast Zinc - ARC, AUG, WLM, WTN = Zinc base material - ARB, AUB, WLB, WTB = Brass base material - ARS, AUS, WLS, WTS = Stainless base material 	Latchbolt	<ul style="list-style-type: none"> - 3/4" (19 mm) Throw with anti-friction tongue, all Stainless Steel
Lock Case	<ul style="list-style-type: none"> - 4 5/16" x 6" x 1" (110 mm x 152 mm x 25 mm) 	Deadbolt	<ul style="list-style-type: none"> - 1" (25 mm) Throw, Stainless Steel
Armor Front	<ul style="list-style-type: none"> - 1 1/4" x 8" x 7/32" (32 mm x 203 mm x 5 mm) - Standard - 1 1/16" x 8" x 7/32" (27 mm x 203 x 5 mm) - Optional 	Strike	<ul style="list-style-type: none"> - 3985 1 1/4" 32 mm) x 4 7/8" (124 mm), 1 3/16" lip - Standard
Escutcheon	<ul style="list-style-type: none"> - 1 15/16" X 8" (50 mm X 203 mm) 	Fasteners	<ul style="list-style-type: none"> - Thru-bolted trim concealed under rose
Keys	<ul style="list-style-type: none"> - Two brass keys per lock 	Finishes	<ul style="list-style-type: none"> - US3, US4, US10, US10B, US26, US26D, US32D* - * For a true US32D finish, must specify stainless steel levers - US3, US4, US10, US10B, US26 may be subject to extended lead times, please consult factory
Cylinders	<ul style="list-style-type: none"> - Brass 6-pin - Keyed different - C keyway - Other keying options available from factory - Interchangeable core - Brass 6 or 7-pin sold separately 	Functions	<ul style="list-style-type: none"> - 10-Passage, 17-Dummy, 27-Double Dummy, 40-Privacy, 44-Privacy with Cointurn, 50-Office, 53-Entry, 56-Corridor, 57-Classroom Security, 61-Apartment, 70-Classroom, 80-Storeroom, 81-Storeroom w/ DB, 82-Institution, 96-Privacy with Indicator
		Notes	<ul style="list-style-type: none"> - Self-adjusting case for beveled doors - Stopworks are incorporated in thumbturn - Breakable spindles to prevent lock from unlocking or being damaged - Non-handed, Stainless Steel, deadlocking bar
		Options	<ul style="list-style-type: none"> - Tactile knurling



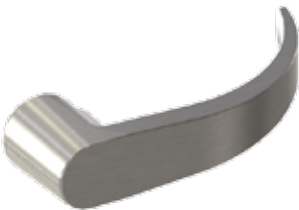
HAGER LOCKSET KNOB AND LEVER OPTIONS



APOLLO KNOB

Available on:

- 3400 Series
- 3500 Series



ARCHER LEVER

Available on:

- 3400 Series
- 3400 Series (Electrified)
- 3500 Series
- 3600 Series
- 3700 Series
- 3800 Series - Escutcheon
- 3800 Series - Sectional
- 3800 Series - Escutcheon (Electrified)
- 3800 Series - Sectional (Electrified)
- 2500 Series



AUGUST LEVER

Available on:

- 3400 Series
- 3400 Series (Electrified)
- 3500 Series
- 3600 Series
- 3700 Series
- 3800 Series - Escutcheon
- 3800 Series - Sectional
- 3800 Series - Escutcheon (Electrified)
- 3800 Series - Sectional (Electrified)



WILLIAM LEVER

Available on:

- 3800 Series - Escutcheon
- 3800 Series - Sectional
- 3800 Series - Escutcheon (Electrified)
- 3800 Series - Sectional (Electrified)



WITHNELL LEVER

Available on:

- 3400 Series
- 3400 Series (Electrified)
- 3500 Series
- 3600 Series
- 3700 Series
- 3800 Series - Escutcheon
- 3800 Series - Sectional
- 3800 Series - Escutcheon (Electrified)
- 3800 Series - Sectional (Electrified)
- 2500 Series





The following products have been approved for statewide acceptance by the Florida Building Commission pursuant to Rule 9B-72.090, F.A.C., for approval of products and systems for use on Exterior Swinging Door Assemblies, in compliance with the structural requirements of the 2007 Florida Building Code. Verification of Florida Statewide acceptance can be found at www.floridabuilding.org under the Product Approval section.

Severe Windstorm Resistant Components for Swinging Door Assemblies
ANSI A250.13 - 2003 Standard

Certified Hardware	Assembly Configuration	Door Size	Door Stiffness Class	Design Load	Florida Certification Number (FL#)
3100 Series Grade 1 Deadbolt	Single - Out Swing	3-0 x 7-0	-	1150 lbf (100 psf)*	6118
	Single - Out Swing	4-0 x 8-0	-	1150 lbf (70 psf)*	
3200 Series Grade 2 Deadbolt	Single - Out Swing	3-0 x 7-0	-	1150 lbf (100 psf)*	6118
	Single - Out Swing	4-0 x 8-0	-	1150 lbf (70 psf)*	
3400 Series Grade 1 Lockset	Single - Out Swing	3-0 x 7-0	-	1150 lbf (100 psf)*	6118
	Single - Out Swing	4-0 x 8-0	-	1150 lbf (70 psf)*	
3500 Series Grade 2 Lockset	Single - Out Swing	3-0 x 7-0	-	860 lbf (80 psf)*	7683
	Single - Out Swing	4-0 x 8-0	-	860 lbf (50 psf)*	
3800 Series Grade 1 Mortise	Single - Out Swing	3-0 x 7-0	-	1150 lbf (100 psf)*	12932
	Single - Out Swing	4-0 x 8-0	-	1150 lbf (70 psf)*	
4500 Rim Exit Device	Single - Out Swing	4-0 x 8-0 max.	I	+/- 70 psf 350 ft-lbs Impact	9481
4500 SVR Exit Device	Out Swing	8-0 x 8-0 pair max.	I	+/- 50 psf 350 ft-lbs Impact	13178
4700 Rim Exit Device	Single - Out Swing	4-0 x 8-0 max.	I	+/- 40 psf 350 ft-lbs Impact	8293
780-112 Roton Hinge	Single Swing	4-0 x 8-0 max.	I	1150 lbf (72 psf)* 350 ft-lbs Impact	6118
780-111, 780-224, 780-226 Roton Hinge (SD & HD)	Single Swing	4-0 x 8-0 max.	I	1150 lbf (72 psf)* 350 ft-lbs Impact	13776
BB1191 Hinge	Single - Out Swing	-	-	1780 lbf**	6118
1279, 1191, BB1279, BB1168, BB1199	Single - Out Swing	-	-	1780 lbf**	13776

* Load in parenthesis indicates the equivalent load in pounds per square foot based on indicated door size and door stiffness (if applicable). This load is based on the hardware item taking half of the force applied to the door assembly by the wind load and the hinges taking the other half.

** This load indicates the design load for a single butt hinge. Maximum wind load should be calculated based on door size, number of hinges used, and the other available door hardware on the door assembly.



Locks

Mortise General Information

HOW TO ORDER

38	53	ESC	ARC	26D	Full6	KD	SCC	RCAF	FL	DR20
Product Group 38 - Mortise Locks, Grade 1	Function 10 - Passage 17 - Single Dummy 27 - Double Dummy 40 - Privacy 50 - Office 53 - Entry 57 - Classroom Security 60 - Deadbolt / Cylinder x Thumbturn 62 - Deadbolt / Double Cylinder 63 - Deadbolt / Classroom 64 - Deadbolt / Cylinder 70 - Classroom 80 - Storeroom 81 - Storeroom with Deadbolt	Trim ESC - Escutcheon SECT - Sectional	Style ARC - Archer WLM - William WTN - Withnell ARB - Archer, Brass WLB - William, Brass WTB - Withnell, Brass ARS - Archer, Stainless WLS - William, Stainless WTS - Withnell, Stainless	Finish US3 US4 US10 US10B US26 US26D US32D	Cylinder Full6 - Full face cylinder 6-pin ICFull6 - IC Full face cylinder 6-pin ICFull7 - IC Full face cylinder 7-pin	Keying KA - Keyed Alike KD - Keyed Different MK - Master Key CMK - Construction Master Key GMK - Grand Master Key SK - Customer Specified Keying 1BC - "1" Bitted Cylinder	Keyway SCC - Schlage C ARI - Arrow C60 - Corbin 60 C67 - Corbin 67 C77 - Corbin 77 CL4 - Corbin L4 SCE - Schlage E SCF - Schlage F KW1 - Kwikset RD1 - Russwin D1 SGT - Sargent LA YAP - Yale E1R YGA - Yale GA WE - Weiser E	Armor Front 0 - Square Corner 1 1/4" RCAF - Round Corner 1 1/4" NAF - Narrow 1 1/16" RCNAF - Round Corner Narrow 1 1/16"	Strike 0 - Standard - 1 3/16" Lip EL15 - Extended - 1 1/2" Lip FL - Flat - 7/8" Lip FLIC - Flat - 1 3/16" Lip RCS - Round Corner - 1 3/16" Lip RC15 - Round Corner - 1 1/2" Lip NL - No Lip	Door Thickness 0 - 1 3/4" Door DR1G - 1 3/8" Door DR20 - 2" Door DR2D - 2 1/4" Door DR25 - 2 1/2" Door

DEADLOCK FUNCTION CHART

FUNCTION	FUNCTION NO.	FUNCTION DESCRIPTION	ANSI NO.	
Cylinder	64	Deadbolt thrown or retracted by key from one side. No trim on opposite side.	F18	
Cylinder x Thumbturn	60	Deadbolt thrown or retracted by key outside or thumbturn inside.	F17	
Double Cylinder	62	Deadbolt operated by key from either side.	F16	
Classroom	63	Deadbolt thrown or retracted by key from outside. Inside thumbturn cylinder retracts deadbolt but cannot project it.	—	



Mortise General Information

LOCK FUNCTION CHART

FUNCTION	FUNCTION NO.	FUNCTION DESCRIPTION	ANSI NO.	
Keyed Without Deadbolt				
Office	50	Latchbolt retracted by lever from either side unless outside is made inoperative by key outside or by turning inside thumbturn. When outside is locked, latchbolt is retracted by lever inside. Outside lever remains locked until thumbturn is returned to vertical or unlocked by key. Auxiliary latch deadlocks latchbolt when door is closed.	F04	
Classroom	70	Latchbolt retracted by lever from either side unless outside is locked by key. Unlocked from outside by key. Inside lever always free for immediate exit. Auxiliary latch deadlocks latchbolt when door is closed.	F05	
Storeroom	80	Latchbolt retracted by key outside or by lever inside. Outside lever always inoperative. Auxiliary latch deadlocks latchbolt when door is closed.	F07	
Keyed With Deadbolt				
Entry	53	Latchbolt retracted by lever from either side unless outside is locked by 20° rotation of thumbturn. Deadbolt thrown or retracted by 90° rotation of thumbturn. When locked, key outside or lever inside retracts deadbolt and latchbolt simultaneously. Outside lever remains locked until thumbturn is restored to vertical position. Throwing deadbolt automatically locks outside lever. Auxiliary latch deadlocks latchbolt when door is closed.	F20	
Classroom Security	57	Latchbolt retracted by lever from either side. Deadbolt thrown or retracted by key from either side. Throwing deadbolt locks outside lever. Turning inside lever simultaneously retracts deadbolt and latchbolt and unlocks outside lever.	—	
Storeroom with Deadbolt	81	Latchbolt retracted by key outside or by lever inside. Outside lever always fixed. Deadbolt thrown or retracted by key outside or thumbturn inside. Turning inside lever simultaneously retracts deadbolt and latchbolt. Auxiliary latch deadlocks latchbolt when door is closed.	—	
Non-Keyed Without Deadbolt				
Privacy	40	Latchbolt retracted by lever from either side unless outside is locked by inside thumbturn. Turning inside lever or closing door unlocks outside lever. To unlock from outside, remove emergency button, insert emergency turn (furnished) in access hole and rotate.	F22	
Passage	10	Latchbolt retracted by lever from either side at all times.	F01	
Non-Keyed Dummy				
Single Dummy	17	Lever on one side fixed by mounting bar.	—	
Double Dummy	27	Lever on both sides fixed by mounting bar.	—	



Hager Companies, Inc
139 Victor Street
Saint Louis, MO 63104

HAGER TEST REPORT NO.: LS07005

EVALUATION OF

**Hager Companies
3800 Series Grade 1 Mortise Lockset**

TEST PARAMETERS:

This report covers tests and/or evaluations performed using the following standard(s) as a guideline:
ANSI/BHMA A156.13-2005 American National Standard for Mortise Locks & Latches.
Testing was conducted by Intertek Testing Services NA, Inc., at their Middleton, WI facility.

DESCRIPTION OF TEST SAMPLES:

Samples were identified as Series 3800 Grade 1 Mortise Lockset.
Samples were received in good condition on 12/13/2006 and 4-4-2007.

TEST DATES: 12-21-2006 – 1/29/2007 and 4-5-2007 – 4-11-2007

RESULTS: COMPLIANT

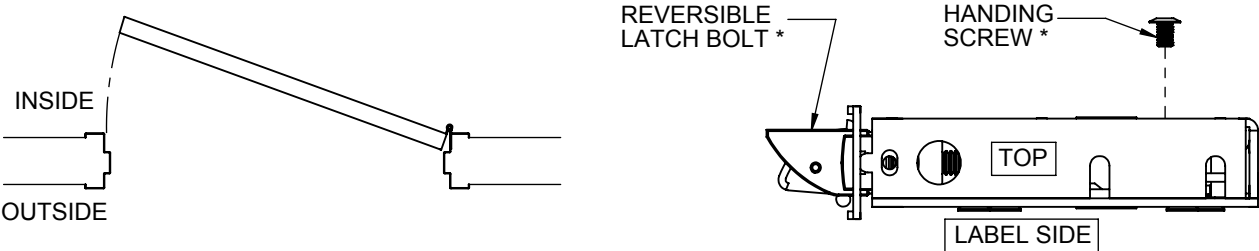
The testing results of specific subsections are summarized below.

Subsection	Test Description	Test Results
9.0	Operational Tests	Compliant
9.8	Strength Tests	Compliant
10	Security Tests	Compliant
11	Cycle Tests	Compliant
13	Material Evaluation Tests	Compliant

The 3800 Series Mortise Lock was found to be compliant to Operational Grade 1 and Security Grade 1 criteria.

This report summary was prepared as an account of work performed by a Third-Party Nationally Recognized Testing Laboratory. The information included in this report are certified extracts from the original test records, as contained in the permanent records of Hager Companies, Inc. Copies of the original third-party test reports are available upon request.

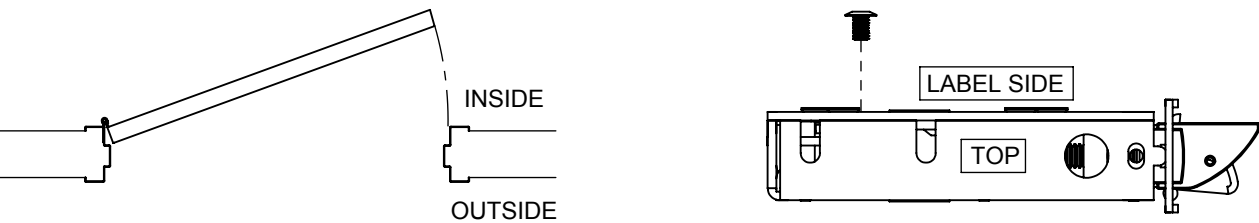
REVISIONS		
REV.	DESCRIPTION	DATE
01	ORIGINAL RELEASE	11/28/2007



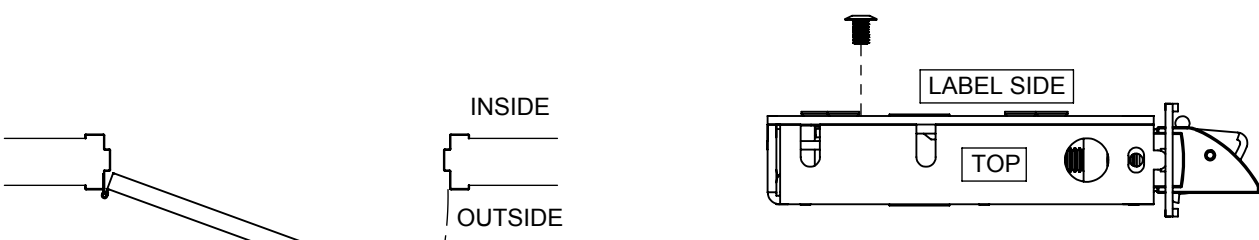
RH - RIGHT HAND DOOR



RHR - RIGHT HAND REVERSE DOOR



LH - LEFT HAND DOOR



LHR - LEFT HAND REVERSE DOOR **

REFER TO THE MORTISE LOCK INSTALLATION INSTRUCTIONS FOR FURTHER DETAILS ON CHANGING THE HANDING.

NOTE: THE LOCK HANDING SCREW MUST ALWAYS BE ON THE INSIDE OF THE DOOR FOR PROPER OPERATION OF THE LOCK.

* TO PROPERLY CHANGE HANDING, BOTH THE REVERSIBLE LATCH BOLT AND HANDING SCREW MUST BE SET PROPERLY. TO USE THIS GUIDE, ORIENT THE LOCK CASE AS SHOWN ABOVE. THE TERM "LABEL SIDE" REFERS TO THE SIDE WITH THE "HOW TO CHANGE LOCK HANDING" STICKER.

** THE LOCK COMES FROM THE FACTORY PRESET WITH THE SCREW INSTALLED ON THE LABEL SIDE. IF REQUIRED, REMOVE THE SCREW AND RE-INSTALL ON THE OPPOSITE SIDE OF THE LOCK CASE (I.E. RH AND RHR REQUIRE THIS CHANGE).



PROPRIETARY & CONFIDENTIAL
THE INFORMATION CONTAINED IN THIS DRAWING IS THE SOLE PROPERTY OF HAGER COMPANIES. ANY REPRODUCTION IN PART OR AS A WHOLE WITHOUT THE WRITTEN PERMISSION OF HAGER COMPANIES IS PROHIBITED.

HAGER RESERVES THE RIGHT TO MAKE DESIGN CHANGES WITHOUT NOTICE. CALL HAGER ENGINEERING AT 1-800-325-9995 FOR THE LATEST REVISION DATE OF TEMPLATE.

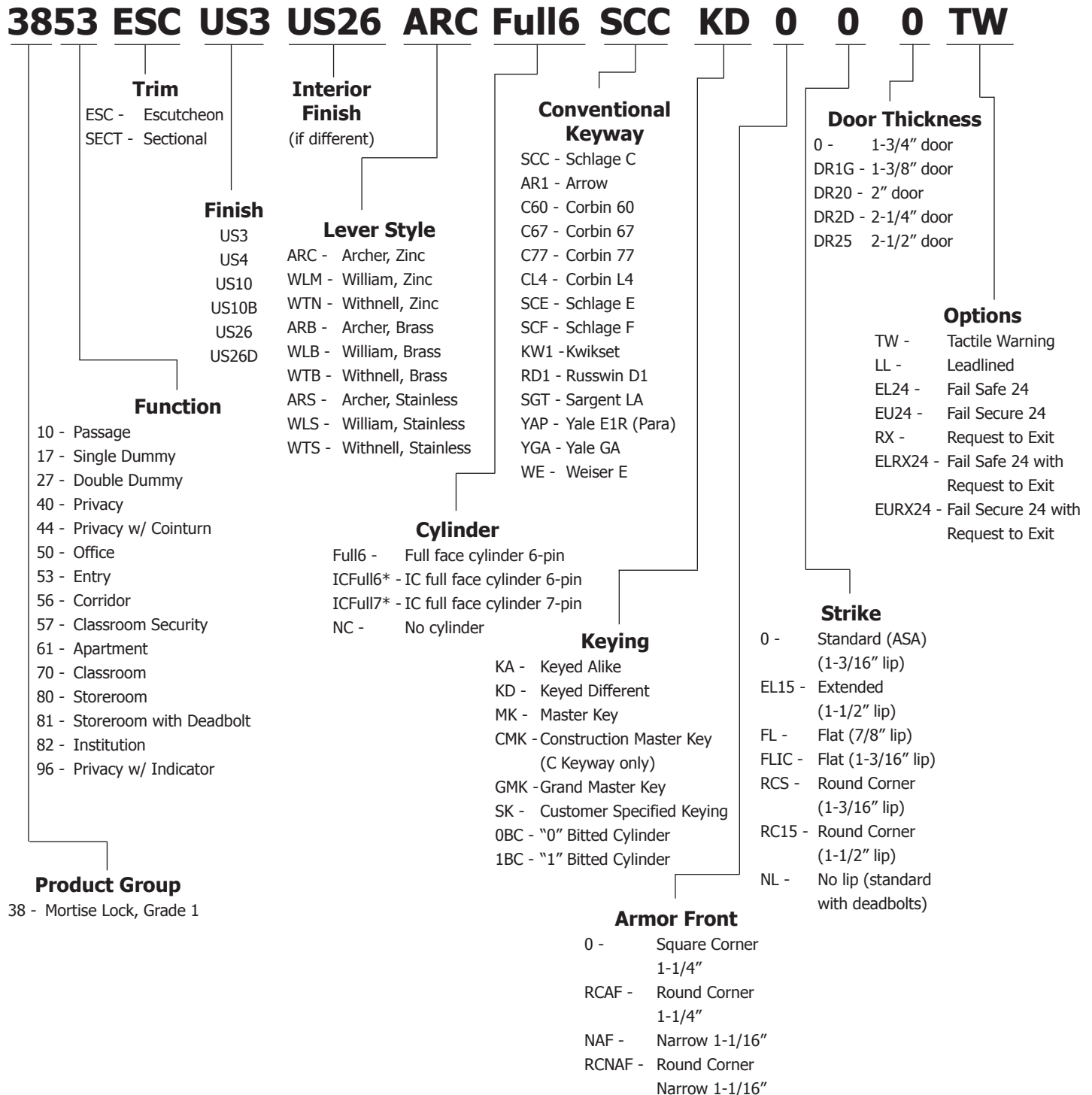
MATERIAL	Material <not specified>
FINISH	-
DO NOT SCALE DRAWING	

DRAWN	TJS	8/13/07
ENG. APPR.	-	-
Q.A.		
TOLERANCES: FRACTIONAL: $\pm 0.015"$ ANGULAR: MACH: $\pm 1^\circ$ BEND: $\pm 1^\circ$ TWO PLACE DECIMAL: $\pm 0.01"$ THREE PLACE DECIMAL: $\pm 0.004"$		

3800		
MORTISE LOCK HANDING GUIDE		
SIZE	DWG. NO.	REV.
A	I-LS00109	01
SCALE: 1:4	WEIGHT: 3.02	SHEET 1 OF 1



3800 SERIES ESCUTCHEON AND SECTIONAL HOW TO ORDER



Notes:

- If master-keyed, include master key instruction sheet with order (available in catalog or online).
- When ordering Deadbolts, specify SECT.
- Finishes other than US26D and US32D may require extended lead times.
- CMK, 0-bitted, and 1-bitted are only available in conventional cores.

* Small format interchangeable core sold separately. Available in Best Keyways only, A Standard.

